

# 543 Holland Drive

MAPLE VIEW ELK CREEK IN TRENTON, OHIO

**TODD**  
Homes llc.com  
Affordable Luxury



## SPECIAL FEATURES:

- First floor primary suite featuring a spacious walk-in closet and a luxurious adjoining bath with an oversized walk-in shower, quartz-topped double vanity, soft-close cabinetry and Moen fixtures for a sleek look.
- Stunning two-story great room highlighted by a striking wall of windows that enhances natural light. Great room flows effortlessly into the kitchen.
- Expansive, upscale kitchen equipped with granite countertops, a dining/food prep/serving island, soft-close shaker cabinetry and stainless steel appliances.
- Open dining room adjoins the kitchen
- Two spacious bedrooms with large closets on the second level.
- Light-filled sunroom is perfect for relaxation, dining, and gatherings.
- Beautiful and durable LVT flooring throughout all shared living areas for low-maintenance elegance.
- Lower level with egress a full bath rough-in for future living spaces!
- Great Location on a cul-de-sac with a spacious yard - NO HOA community!

 3  
Bedrooms

 2.5  
Bathrooms

 2  
Garage

 1823  
Square Feet

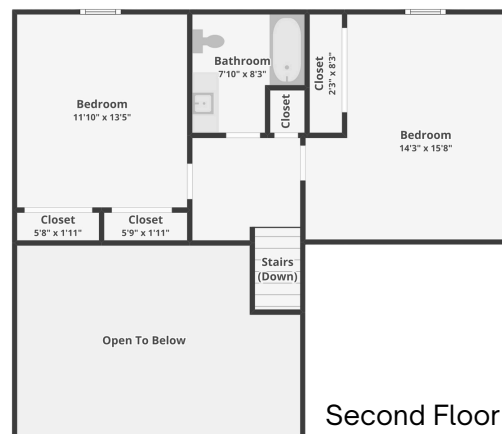
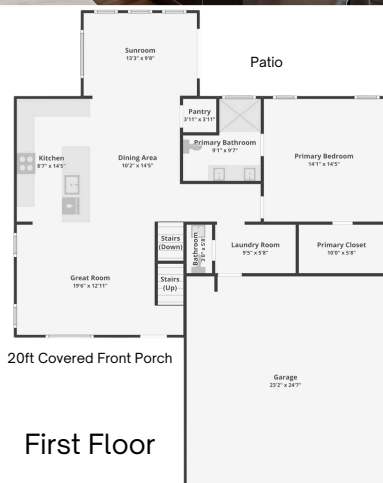


# 543 Holland Drive

**TODD**  
Homes  
llc.com

MAPLE VIEW ELK CREEK IN TRENTON, OHIO

Affordable Luxury



**EXPLORE  
543 HOLLAND DRIVE**

CONTACT US  513.823.3774

VISIT US:  [www.toddhomesllc.com](http://www.toddhomesllc.com)

© Copyright 2025 Todd Homes LLC. All rights reserved. The information contained is not part of a legal, binding contract. Floor plans cannot be used for building or design purposes. Square footage may change between the different elevations of the same named floor plan. Sizes and dimensions are approximate.