



we come home

BISHARD HOMES

608A 14TH STREET


**BISHARD
HOMES**

WHY BISHARD HOMES?

More than 20 years after Bishard Development Corporation was introduced, we continue the tradition that the Bishard brothers began.

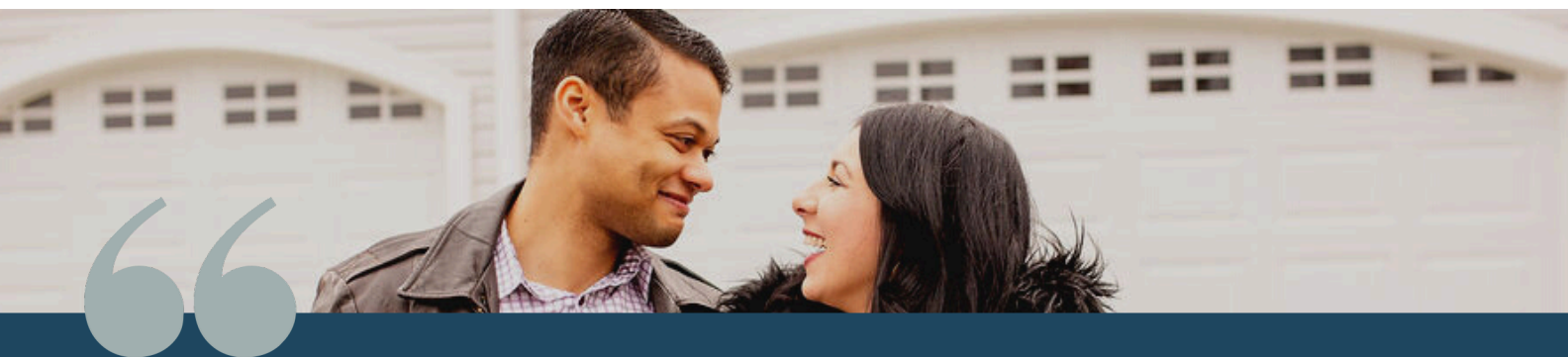
Over the years, the area has changed. Design, materials, and technology have evolved, enabling us to build

homes that “perform”—with smart technology, energy efficiency, and design innovations that increase comfort and convenience.

Still, the desire for the serenity that can only be experienced at the shore remains the same—along with the integrity of the people who make Bishard Homes a success. From your first inquiry through finalizing your choices and following the path to ownership, we will smoothly navigate you through every step.

We listen. We offer ideas. We use our experience to bring your dream to life.

Bishard Homes is not our business. It's our pleasure.



Bishard Homes and Bishard Builders have an outstanding reputation for building quality affordable housing and standing firmly behind the quality construction they construct!

-MICK, VIRGINIA BEACH

The Lakewood

608A 14TH STREET

The Lakewood is a three-story home featuring 3 bedrooms and 3.5 baths, located just over half a mile from the beach and within walking distance of popular local coffee shops and restaurants. The first floor includes the garage and a private ensuite, perfect for guests. Upstairs, the second floor offers an open-concept living area connected to the kitchen, complete with a gas range, quartz countertops, and a spacious walk-in pantry. This level also opens to the front deck, filling the space with natural light. The third floor is dedicated to the Owner's suite and an additional ensuite bedroom. The Owner's suite boasts a large tiled shower, a double vanity with granite countertops, and a generous walk-in closet.

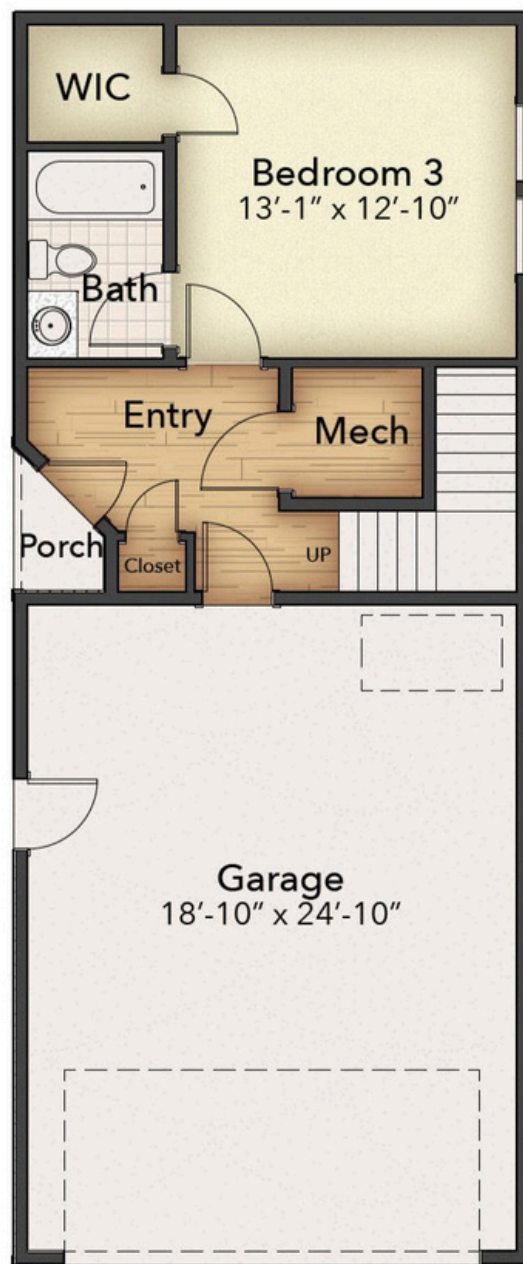


**BISHARD HOMES**

The Lakewood

608A 14TH STREET

FIRST FLOOR



**BISHARD HOMES**

**all pricing, products, and availability are subject to change without notice.*

The Lakewood

608A 14TH STREET

SECOND FLOOR



**all pricing, products, and availability are subject to change without notice.*

The Lakewood

608A 14TH STREET

THIRD FLOOR

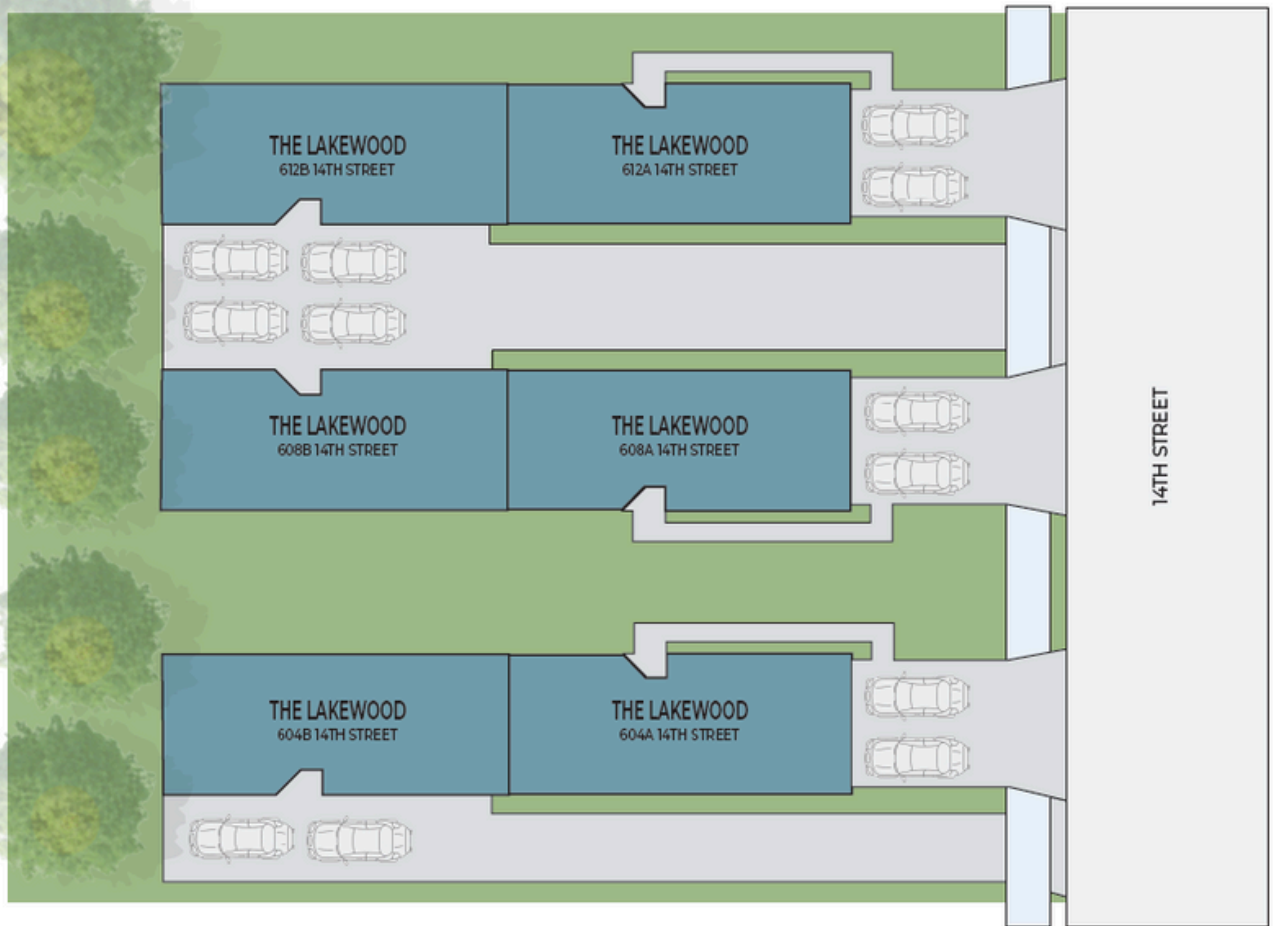



BISHARD HOMES

**all pricing, products, and availability are subject to change without notice.*

14th Street

SITE LAYOUT



**Site plan is an artistic rendering, subject to artistic liberties.*

608 A 14th Street

STANDARD FEATURES

ELEGANT INTERIOR FEATURES

- Interior Floor Plans Designed to Maximize Natural Light
- High Ceilings in Living Area (9' Per Plan)
- Deluxe 42" (Upper) Cabinets
- Designer Brand Lighting Fixture Package
- Softclose Dovetail Drawers and Doors
- Quartz Kitchen Countertops & Maintenance Free Backsplash
- Delta Designer Kitchen Faucet & Modern Kitchen Sink
- Stainless Steel Appliances
- Gas Range Stove w/ Stainless Vent Hood
- Microwave in below Cabinets
- Shaw Luxury Vinyl Plank in the Living Area
- Shaw Stain Resistant Carpet in Bedrooms & Hallways
- Hardwood Oak Staircase (one set of stairs)
- Ceiling Fan in the Primary Bedroom
- Abundant LED Recessed Lighting (Per Plan)
- Smooth Drywall Finish
- Sherwin Williams 2-Toned Paint
- Electric Fireplace in Living Room
- Cable Outlets in All Bedrooms and Living Room
- Smart Closet for Whole Home Wi-Fi Connectivity

DISTINCTIVE EXTERIORS

- Beautiful Appointed Exterior Features
- Vinyl Windows Low E Glass with grids
- 30 Year Architectural Shingles
- Low Maintenance Woodgrain Double Lap Siding
- Fiberglass Entry Door
- Carriage Garage Door
- Metal Roof (Per Plan)
- Brick Skirt Accent on Front of House (Per Plan)
- Designer Brand Exterior Lighting Package
- Brushed Concrete Walkways & Driveway
- Landscape Design including Shrubs & Sod Entire Yard
- Hose Bibs – Front and Rear
- GFI Protected Outlets – Front and Rear

APPOINTED OWNER'S BATH

- Ceramic Tile Floors
- Fiberglass Shower Pan w/ Tile Walls
- Granite Vanity Countertops
- Quality Delta Fixtures & Matching Bath Hardware
- Elongated Toilet



608 A 14th Street

STANDARD FEATURES

SECONDARY BATHS

- Pedestal Sink w/ Oval Mirror in Powder Room
- Granite Vanity Tops in Secondary Bathrooms
- Ceramic Tile on Floors
- Low Maintenance Fiberglass Tub/ Shower
- Quality Delta Fixtures with Matching Bath Hardware
- Elongated Toilets

ENERGY EFFICIENT FEATURES

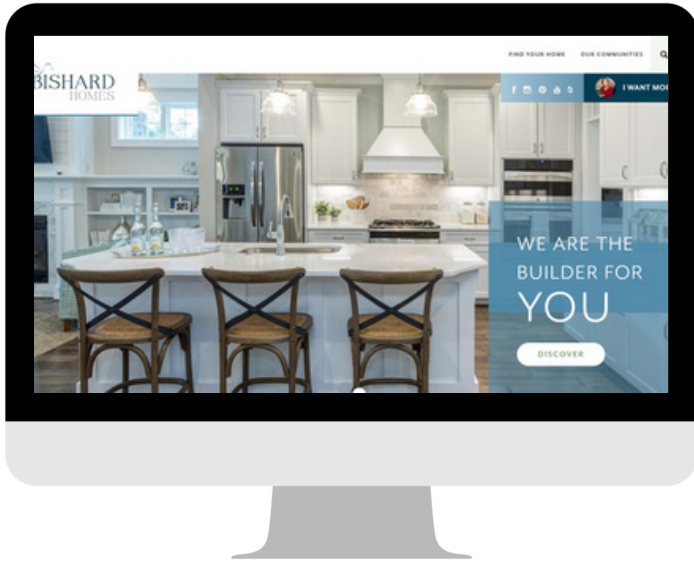
- Energy Efficient Tankless Gas Water Heater
- Programmable Thermostat w/ Smart Phone Connectivity
- LED Energy Efficient Bulbs Throughout Home
- Energy Star Appliances
- Energy Efficient Gas Furnace w/ 14 SEER A/C
- R-49 Attic Insulation, R-15 Exterior Wall Insulation
- Insulated Concrete Slab Foundation
- Spray Foam Insulation on All Penetrations
- TYPAR House Wrap System

WARRANTY

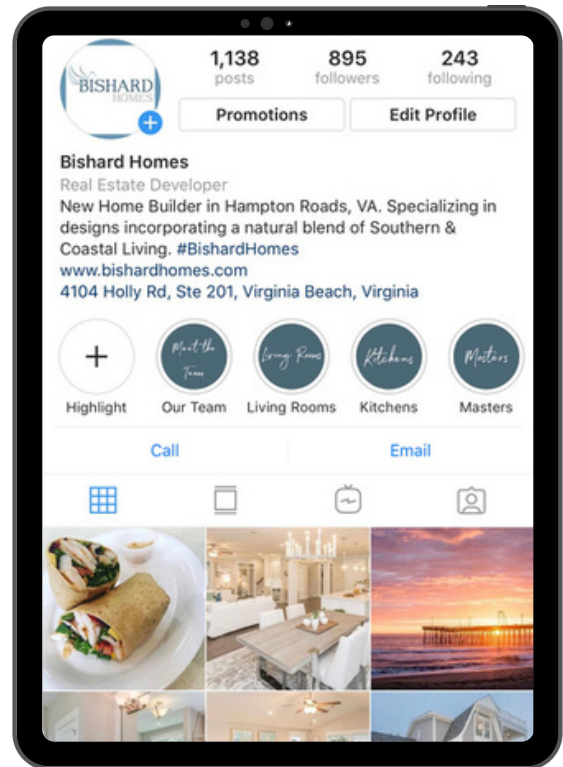
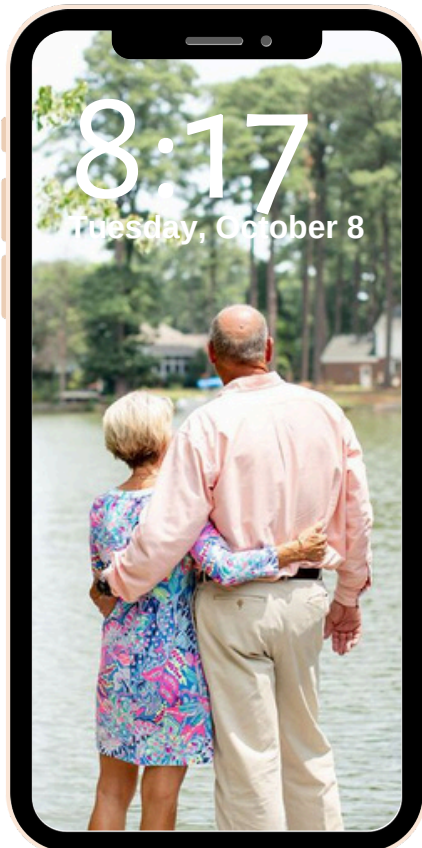
- 1 Year Material & Workmanship
- 5 Year Structural Warranty



QUESTIONS?



FIND US ONLINE AT
WWW.BISHARDHOMES.COM



CALL OUR
NEW HOME SPECIALISTS
(757) 703-3367