

KINGSTON



1,944 sq ft



3 bed



2 bath



flex



3-car garage



A | Traditional



B | Craftsman



F | Modern

YOUR IDEAL HOME

Recognized as one of the nation's top-quality home builders, IDEAL has built a 35-year reputation in Oklahoma for energy efficiency, high customer satisfaction, exceptional value for your money, and style that maximizes innovative design. IDEAL is also the **only builder in Oklahoma** to guarantee your heating and cooling costs for three years.*

Learn more about the included features for this floor plan.



**Some community exclusions apply*



1,944 sq ft



3 bed



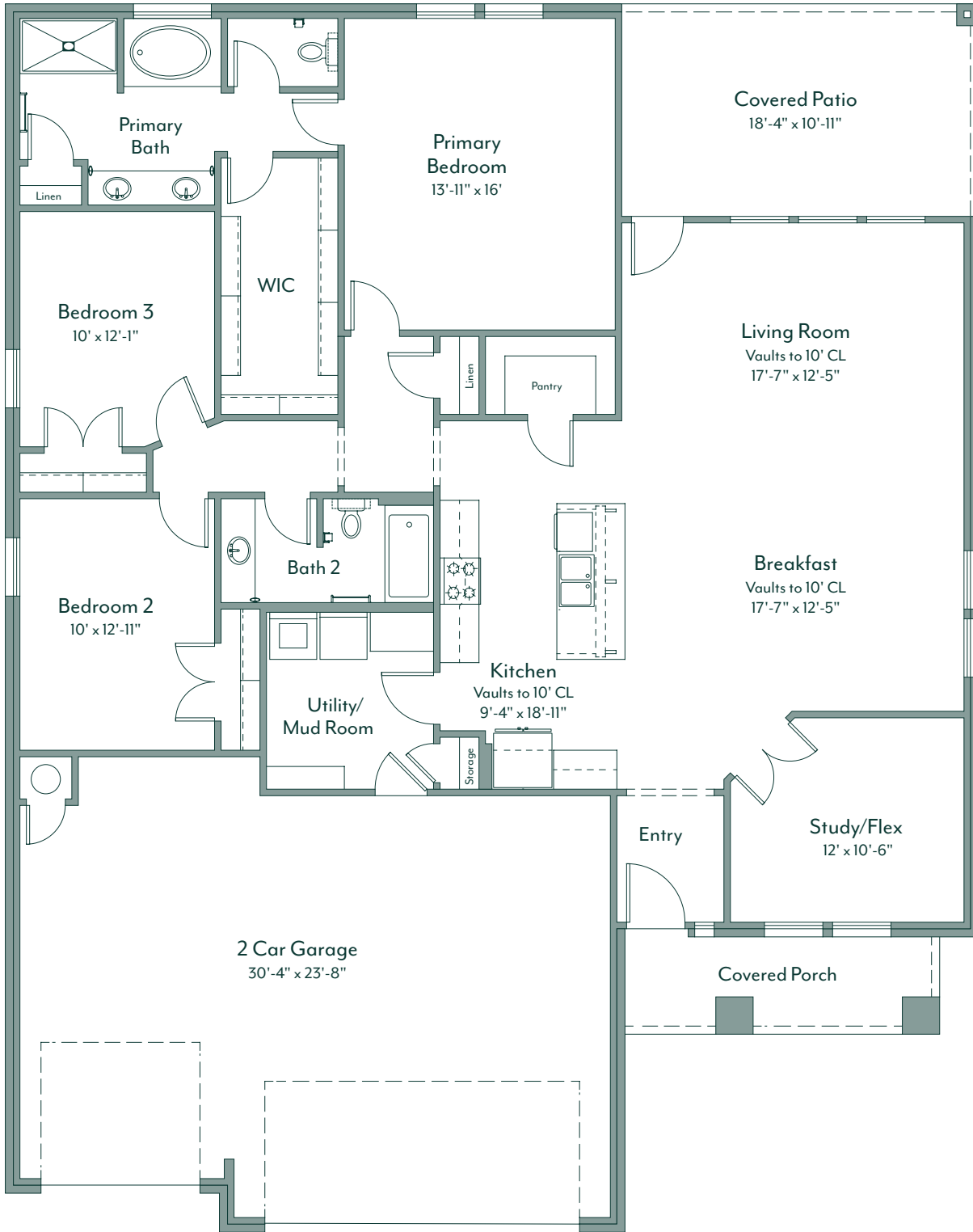
2 bath



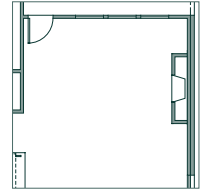
flex



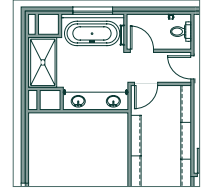
3-car garage



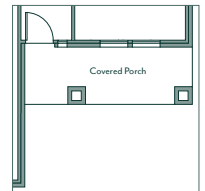
[customize this plan](#)



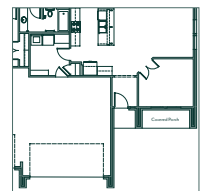
fireplace



primary bath
freestanding tub



porch b



porch f



Use our **interactive online tool** to customize this floor plan and explore elevation options.