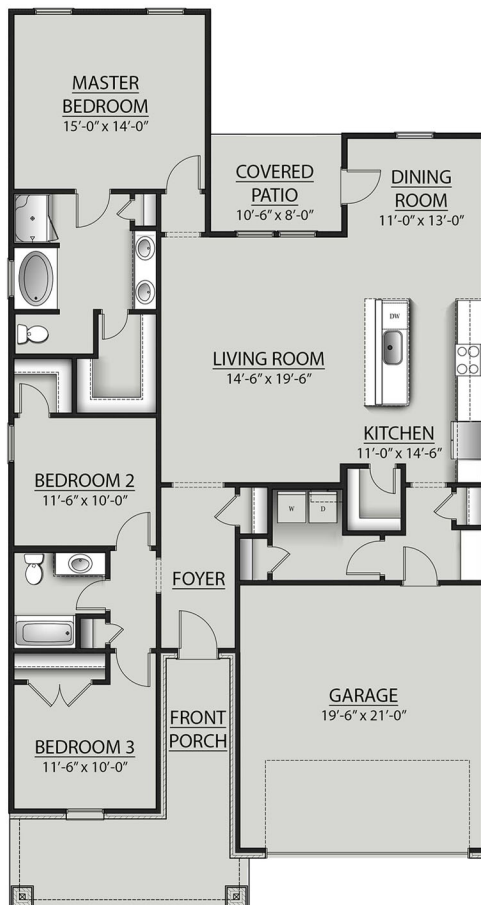


THE NEWTON V IV PLAN



Living Area

1704 Square Feet

Total Area

2426 Square Feet

Features

- Open Floor Plan
- Two Car Garage
- Three Bedrooms, Two Bathrooms
- Brick, Stone & Siding Exterior
- Covered Patio
- Boot Bench
- Recessed Can Lighting in Kitchen
- Walk-In Pantry
- Master Garden Tub
- Separate Master Shower
- Double Master Vanity
- Walk-In Master Closet



Floor plans and elevations are subject to change without notice. Elevations and renderings are artistic conceptions and may not accurately depict home styles. Characteristics, including but not limited to windows, doors, plan configurations and orientations are subject to change per home site. Information contained in this flyer is subject to errors, omissions, changes, withdrawals and prior sales without notice.