

Holloway



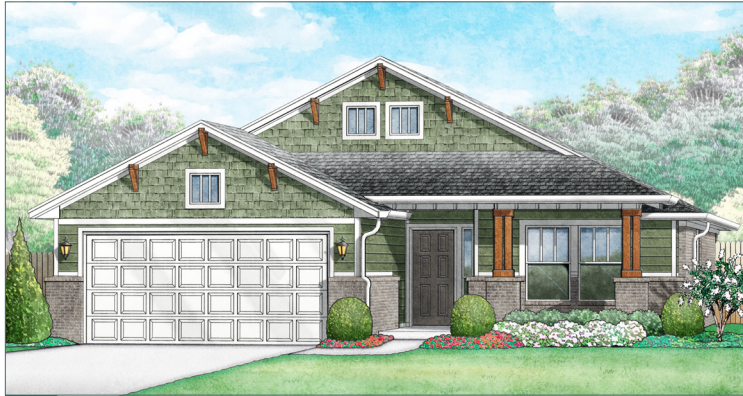
1,682 sq ft



3 bed

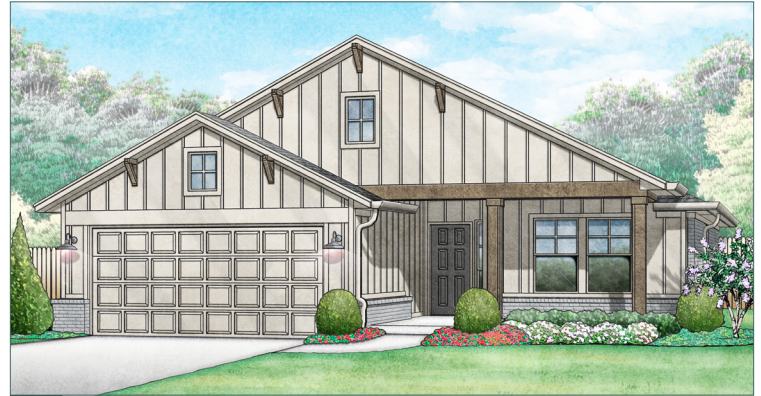


2 bath



a

craftsman



b

farmhouse



e

mountain cottage



f

modern

FEATURES YOU'LL LOVE ABOUT THIS HOME

four eye-catching elevations
to enhance curb appeal

ample storage
throughout the home

natural light flowing from
large kitchen windows

computer nook option for office space
without giving up a bedroom

drop-zone mudroom located by
the front door and the garage entrance



IDEAL
homes | neighborhoods®



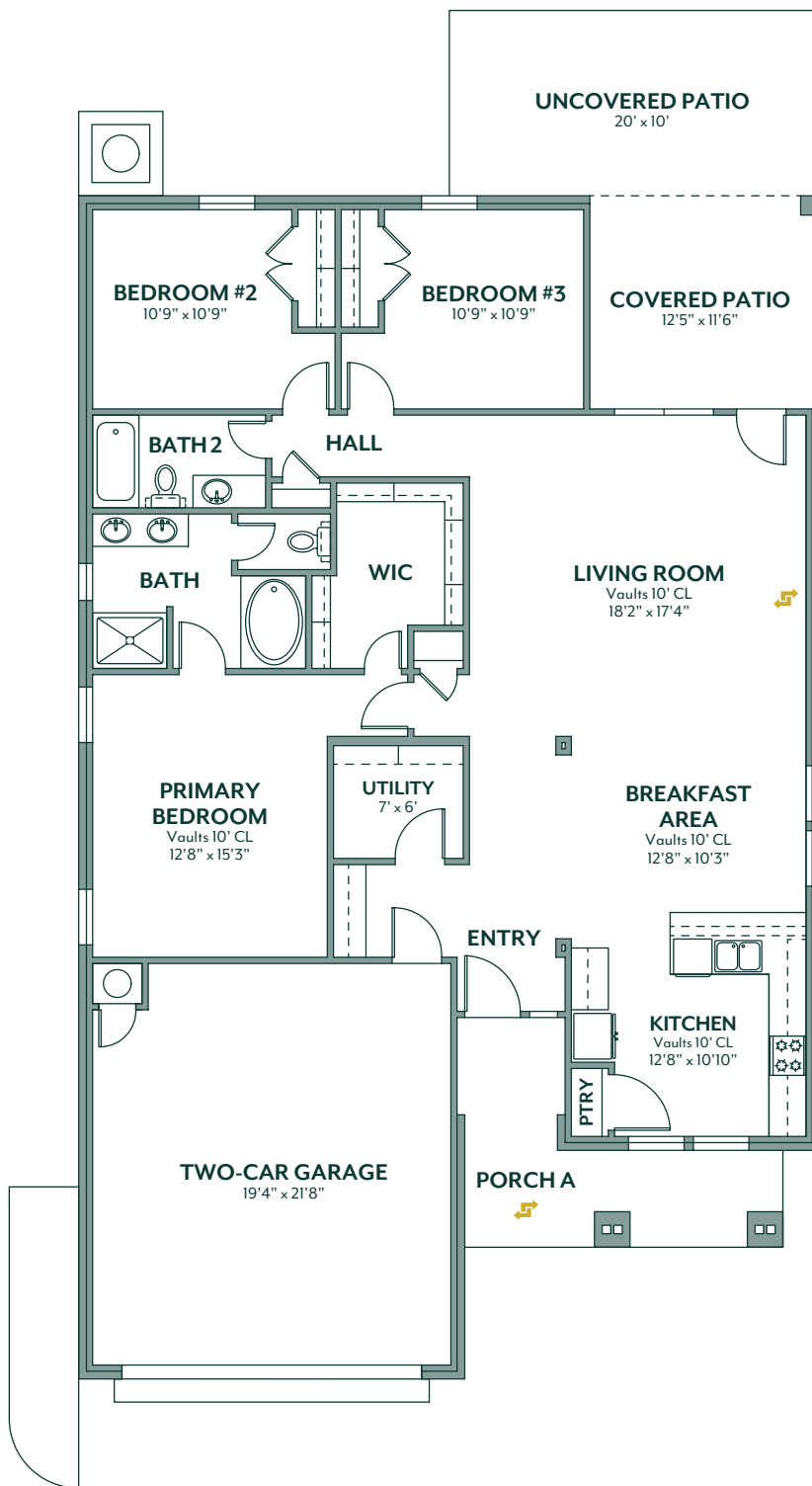
HERE'S HOW WE DEVELOP EVERY IDEAL FLOOR PLAN:

We consider everything ...

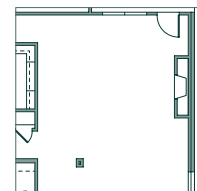
- sight lines & traffic flow
- furniture placement
- usable space
- architectural details
- window placement & size for optimal lighting
- function & low maintenance needs

405.364.1152

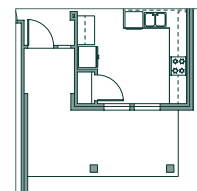
www.idealhomes.com



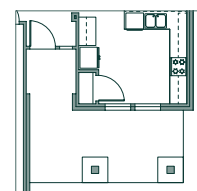
✓ customize this plan



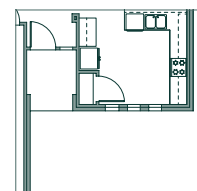
fireplace



porch b



porch e



porch f



Scan the code to view a **photo gallery & included features**
for the Holloway floor plan