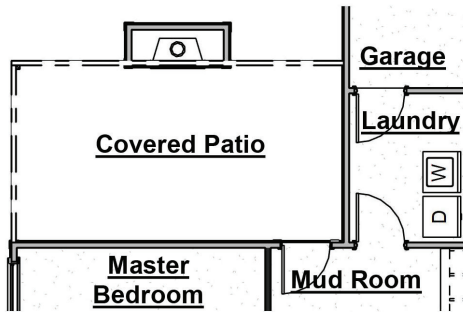


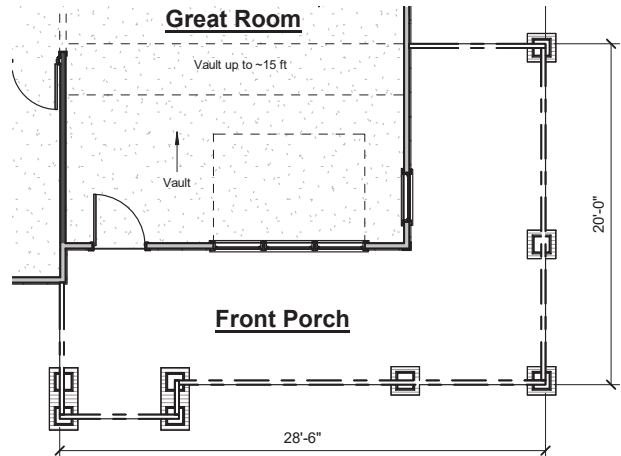
# *the* ST. ANDREW

## *Plan Options*



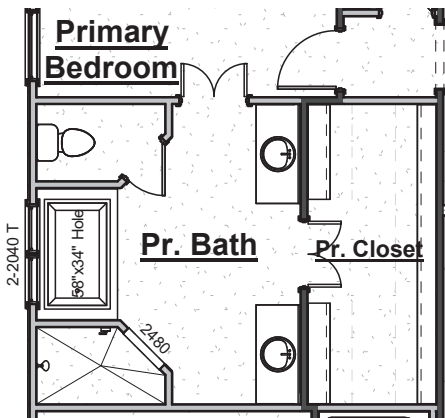
*Outdoor Gas Log Fireplace with Cedar Mantel*

- Adds outdoor fireplace with siding to match house, cedar beam mantel, firebox, gas logs & electrical outlet above fireplace



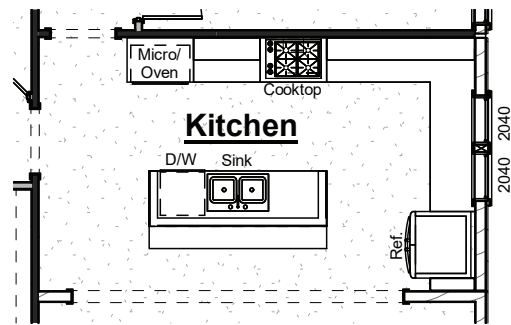
*Wrap Around Front Porch*

- Adds approximately 160 sf covered porch



*Primary Bathroom Tub*

- Adds drop-in tub with tile surround
- Relocates walk-in shower
- Removes transom window & replaces with (2) 2'x4' Windows



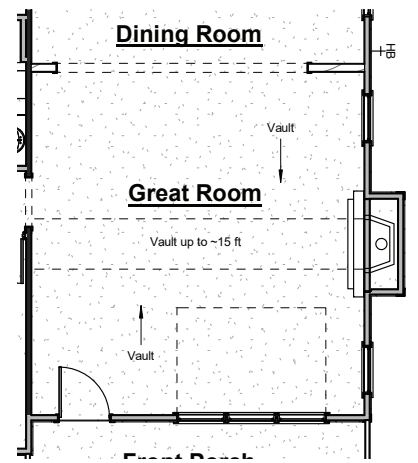
*Chef's Kitchen*

- Includes Frigidaire Gallery cooktop, wood hood, microwave above wall oven, dishwasher & cabinets in island

# SweetBay

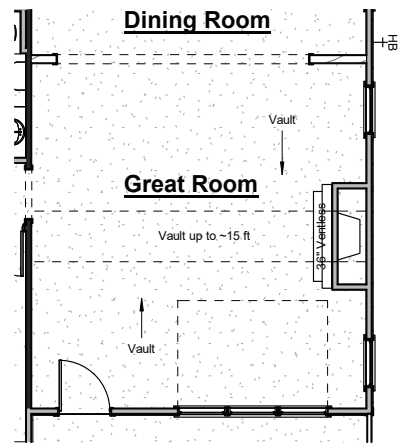
Life at water's edge.

Floor Plan Exclusively Designed for the SweetBay Community



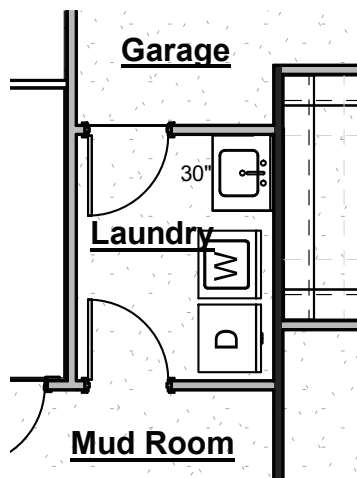
*Great Room Fireplace Bump-Out*

- Adds fireplace to Great Room
- Includes trim-built mantel, firebox, 18" gas logs, tile surround & electrical outlet above fireplace



*Great Room Fireplace Bump-In*

- Adds fireplace to Great Room
- Includes trim-built mantel, firebox, 18" gas logs, tile surround & electrical outlet above fireplace



*Laundry Room Sink Option*

- Includes stainless sink with 30" base cabinet, cabinet hardware and countertop
- Cabinet base and countertop can be replaced with a freestanding utility sink

\*Certain structural options may not be available due to lot restrictions and/or selection of other options. Prices subject to change without notice.



HARRISDOYLE.COM



facebook.com/harrisdoylehomes



@harrisdoylehomes  
#harrisdoyle



HARRIS DOYLE  
HOMES