

HAYDEN A3

TWO STORY | 4-5 BEDROOMS | 3-4 BATHROOMS | 2,660-2,904 SQ FT | ELEVATION A3



2-CAR FRONT ENTRY GARAGE



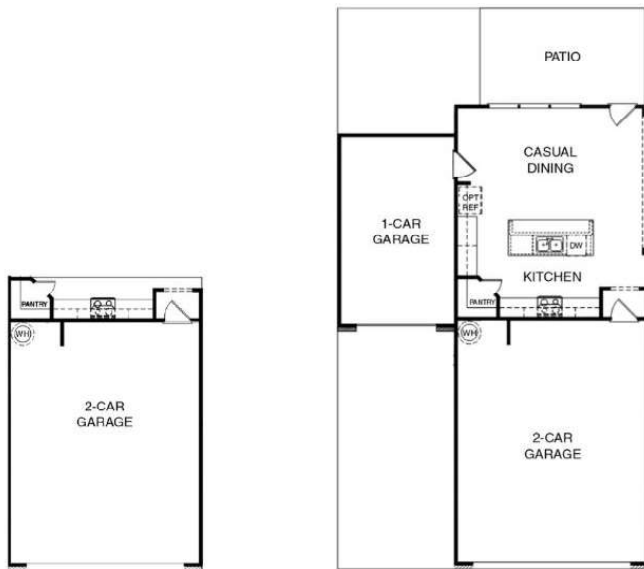
3-CAR FRONT ENTRY GARAGE



2-CAR SIDE ENTRY GARAGE



3-CAR SIDE ENTRY GARAGE



2-CAR FRONT ENTRY GARAGE



3-CAR FRONT ENTRY GARAGE



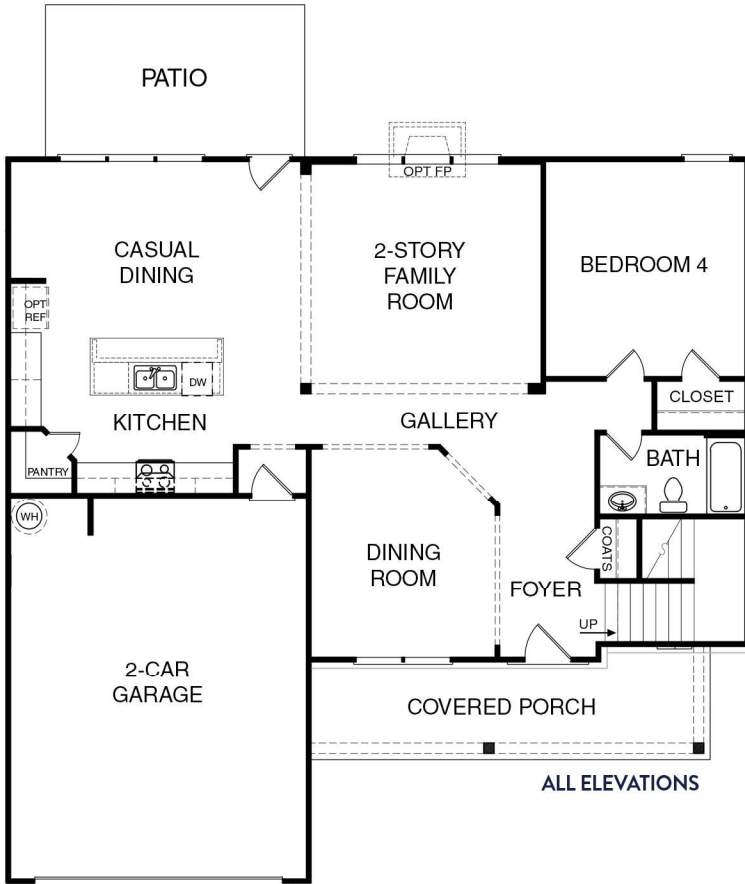
2-CAR SIDE ENTRY GARAGE



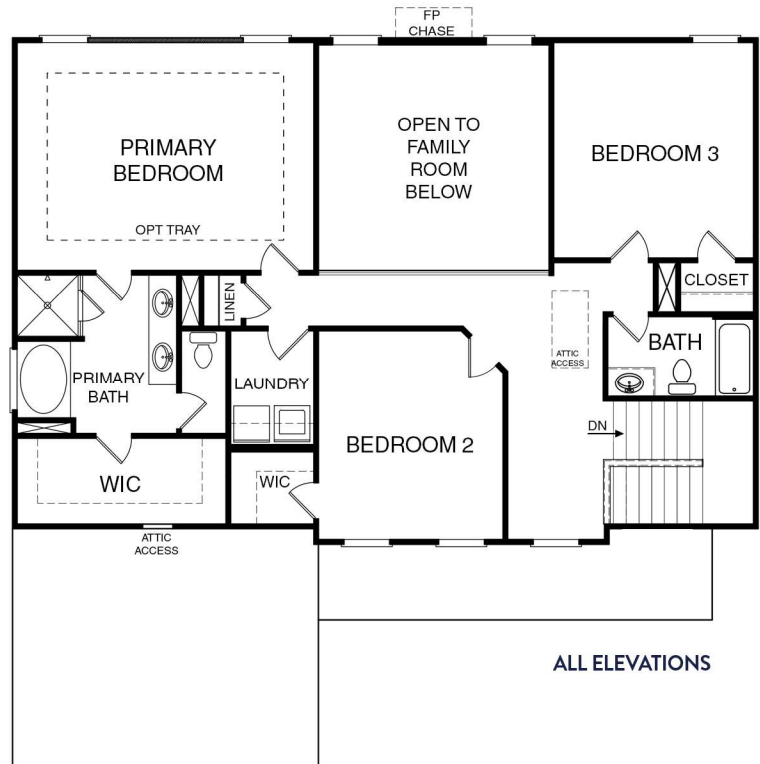
3-CAR SIDE ENTRY GARAGE

TWO-STORY | 4-5 BEDROOMS | 3-4 BATHROOMS | 2,660-2,904 SQ FT | FLOOR PLAN

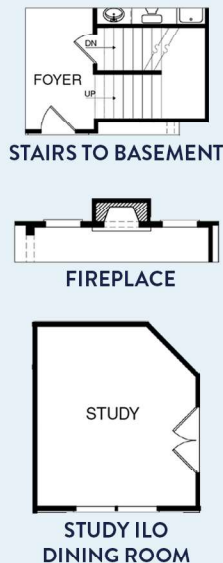
- FIRST FLOOR -



- SECOND FLOOR -



- FIRST FLOOR OPTIONS -



- SECOND FLOOR OPTIONS -

