

The Treyburn III

Craftsman 'A'



Options shown: Stone Accent, Gable Hips, & Metal Porch Roof

Arts & Crafts 'A'



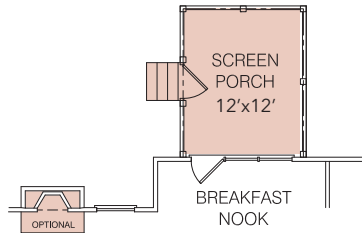
Options shown: Metal on Shed Roof & 12" Overhangs.

Traditional 'A2'

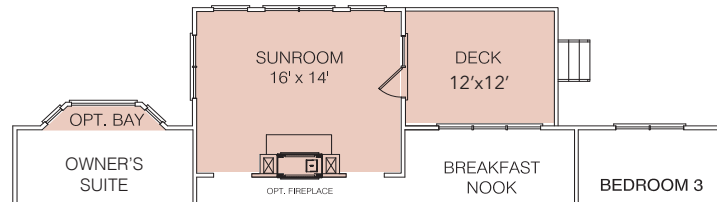


Options shown: Box Bay Window, Metal on Box Bay Roof & Watertable.

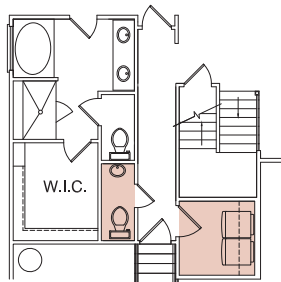
The Treyburn III 1st Floor Plan



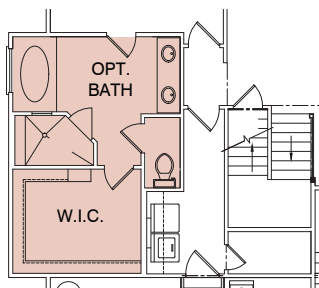
Optional Screened in Porch



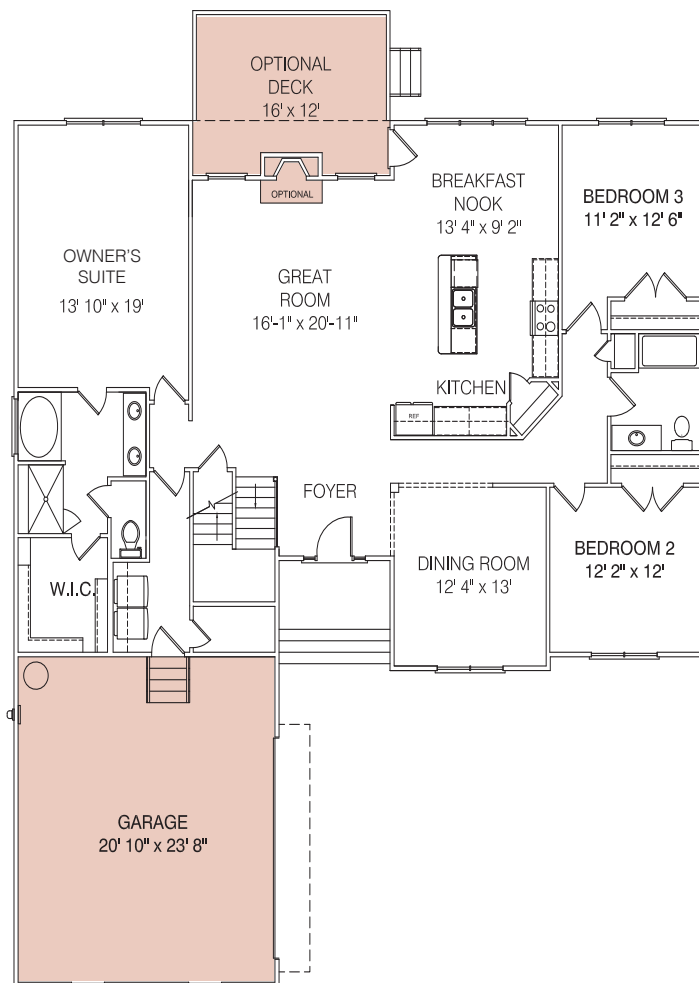
Optional Sunroom & Deck
Two-sided Fireplace Is Optional



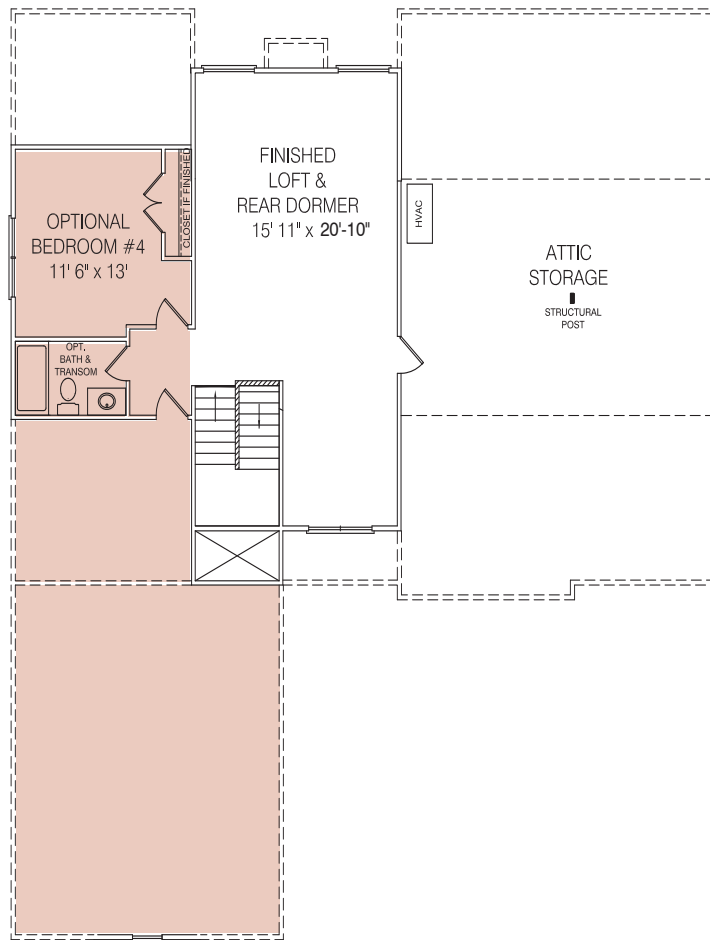
Optional Half Bathroom/Laundry Room Layout



Optional Owner's Bathroom Layout

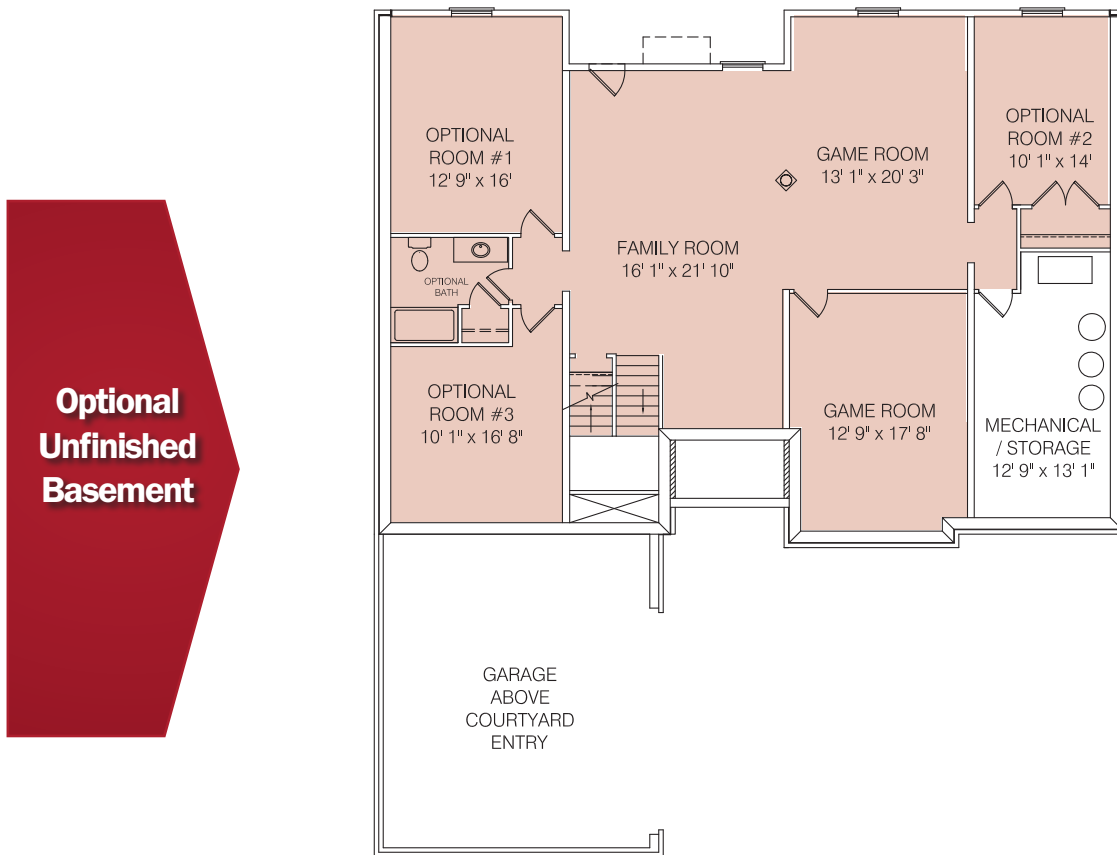


The Treyburn III 2nd Floor Plan



Includes a Finished Loft, Rear Dormer & Attic Storage Over the Main House & Master Bathroom.
Options: Rough-in or Finished Bath, Bath Transom, Finished Bedroom with a Closet & Attic Storage over the Garage.

The Treyburn III Basement



Window & door locations in a basement are subject to change per lot conditions.

Square Footage

First Floor	2,070
Second Floor Fin.	451
Total	2,521
Second Floor Unfin.	232
Opt. Basement	1,906
Opt. Master Bath	+59
Opt. 16'x14' Sunroom	232
Garage	516
Footprint	56' x 63'

Although all illustrations and specifications are believed correct at the time of publication, the right is reserved to make changes, without notice or obligation. Windows, doors, ceilings, and room sizes may vary depending on the option and elevation selected. Optional items indicated are available at additional cost.

This brochure is for illustrative purposes only and not part of a legal contract. It is recommended that the architectural blueprints be reviewed for further clarification of features. Not all features are shown. Please ask our New Home Consultant for complete information.

We are pledged to the letter and the spirit of the United States Policy for the achievement of equal housing opportunity throughout the Nation. We encourage and support an affirmative advertising and marketing program in which there are no barriers to obtaining housing because of race, color, religion, sex, handicap, familial status or national origin.