

2308 RIVERCANE COURT



GREENS PRAIRIE RESERVE NEIGHBORHOOD

4 BDRM | 2.5 BATH | 2075 SF

The Iris makes her debut as one of Avonley Homes' newest plans. Full of functionality, this home makes you feel welcome as soon as you walk into the elegant entryway leading to the light and airy living space. This 4 bedroom, 2.5 bath home features an open concept living area complete with a L-shaped kitchen full of storage and ample workspace. Enjoy all that the primary bathroom has to offer with dual sinks, a walk-in shower, garden tub and walk-in closet.

Landscaping shown is for illustrative purposes only and may include optional upgrades not included in the landscape package per the list price

FEATURES:

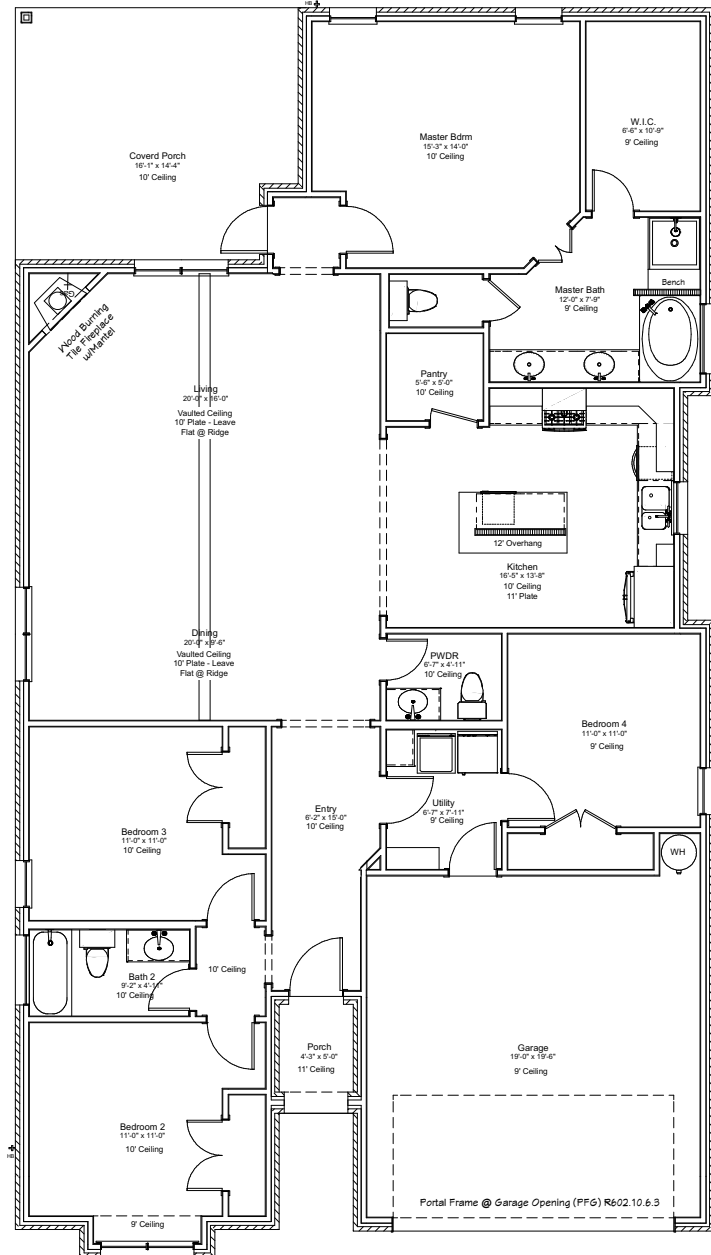
Mudroom Cabinetry | Granite Countertops | Luxury Vinyl Plank Flooring
Wood Burning Fireplace | Covered Back Porch | Stainless Appliances

COME HOME TO AVONLEY



Avonley Homes
979-321-7200
info@avonleyhomes.com

2308 RIVERCANE COURT



4 BDRM | 2.5 BATH | 2075 SF

WWW.AVONLEYHOMES.COM

COME HOME TO AVONLEY | Avonley Homes is committed to giving families the home of their dreams. From simple comfort to expert craftsmanship, we promise you will be proud to call our house your home.