

# GUINEVERE

4 BEDROOM + | STUDY | LOFT | PATIO | 2 1/2 BATH + | 2 CAR GARAGE | 2,874 SQ. FT.

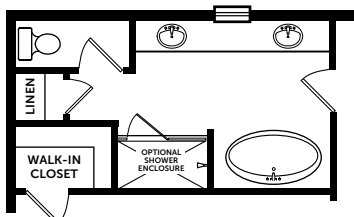
ELEVATION A



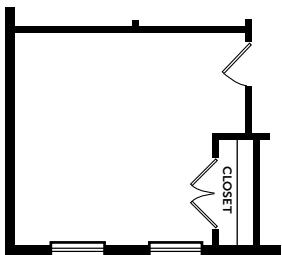
ELEVATION C



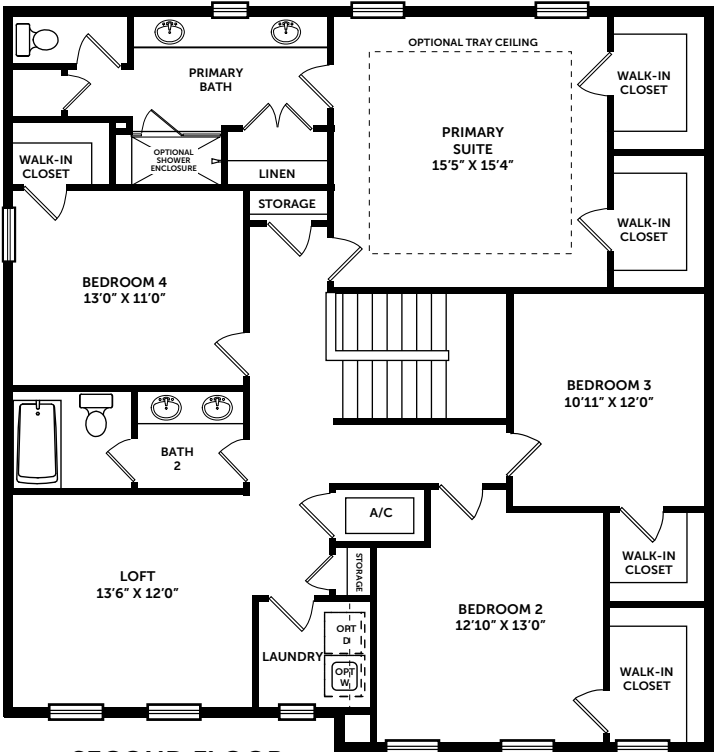
ELEVATION E



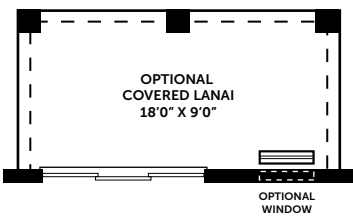
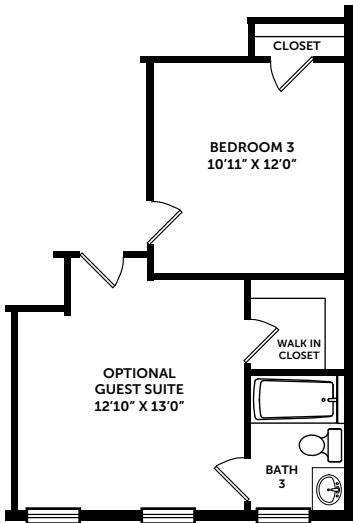
SEE ATTACHED FLOORPLAN



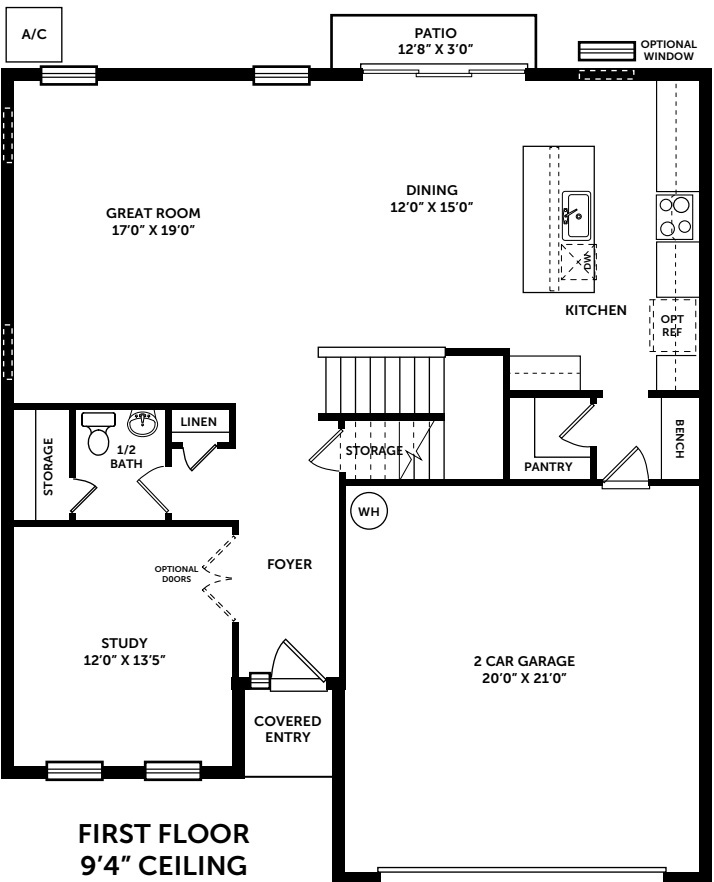
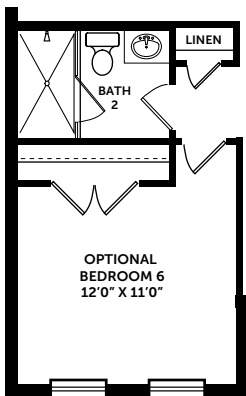
SEE ATTACHED FLOORPLAN



SECOND FLOOR  
8" CEILING



OPTIONAL WINDOW



FIRST FLOOR  
9'4" CEILING

