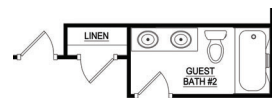
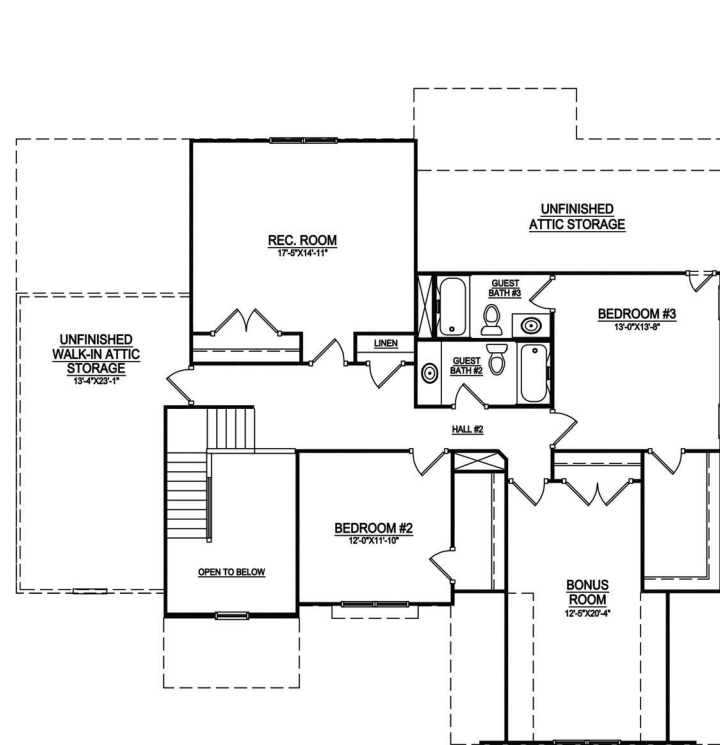


THE GREYSTONE

CHESHIRE LANDING

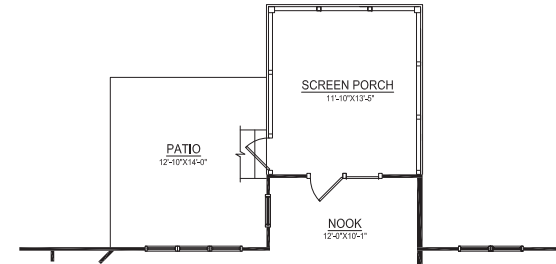
SECOND FLOOR & STRUCTURAL OPTIONS



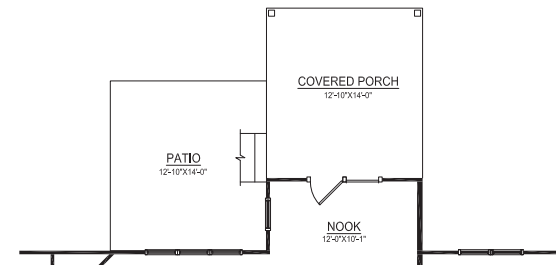
OPTIONAL
GUEST BATH #2



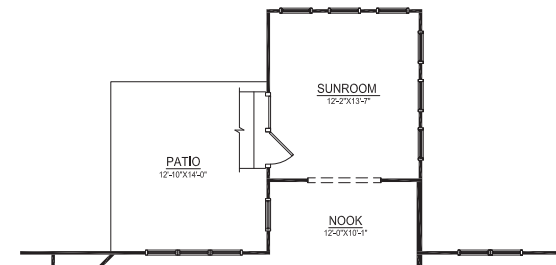
OPTIONAL
GUEST BATH #2 & #3



OPTIONAL SCREEN PORCH W/
OPTIONAL KITCHEN #2 W/ NOOK #2
& OPTIONAL NOOK #3



OPTIONAL COVERED PORCH W/
OPTIONAL KITCHEN #2 W/ NOOK #2
& OPTIONAL NOOK #3



OPTIONAL SUNROOM W/
OPTIONAL KITCHEN #2 W/ NOOK #2
& OPTIONAL NOOK #3



COASTAL



COTTAGE



INLAND MANOR



TRADITIONAL

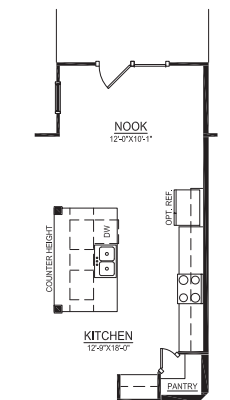
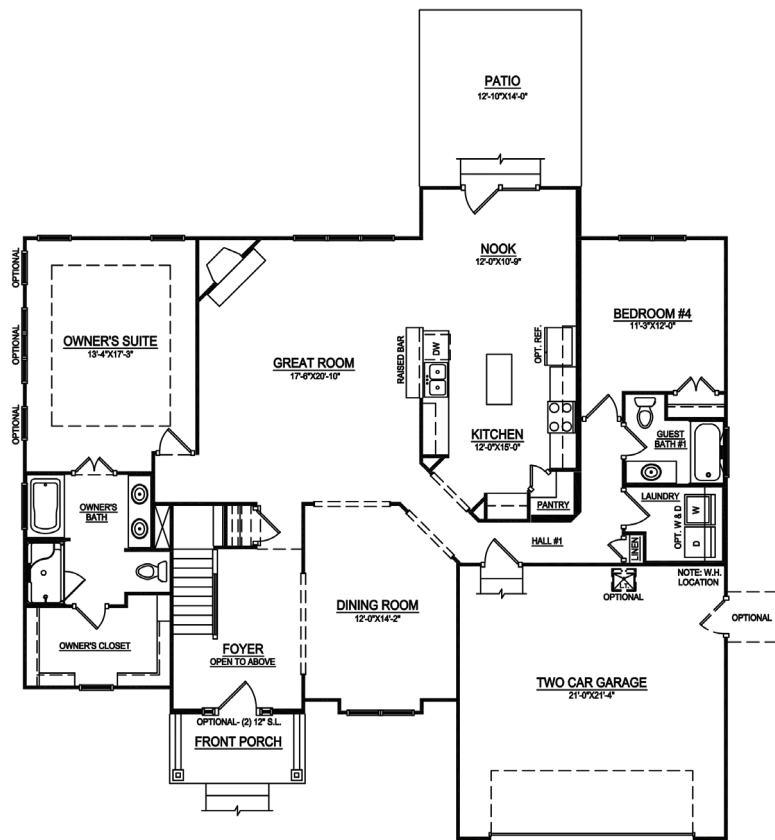
THE GREYSTONE

4 BEDROOM | 4 BATHROOM | 3,222 sq.ft.

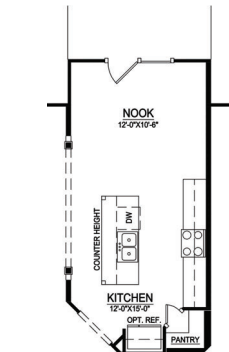
ADDITIONAL OPTIONS WILL AFFECT SQUARE FOOTAGE

THE GREYSTONE

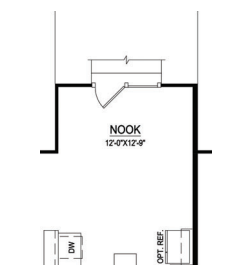
FIRST FLOOR & STRUCTURAL OPTIONS



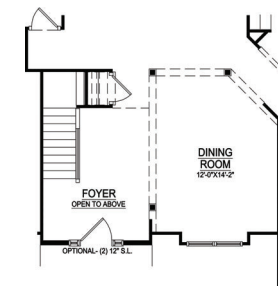
OPTIONAL KITCHEN #2
W/ NOOK #2



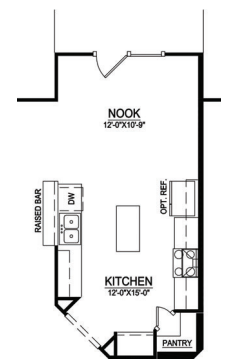
OPTIONAL KITCHEN #3



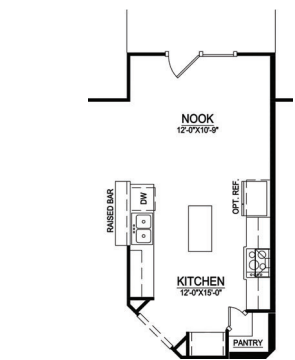
OPTIONAL NOOK #3



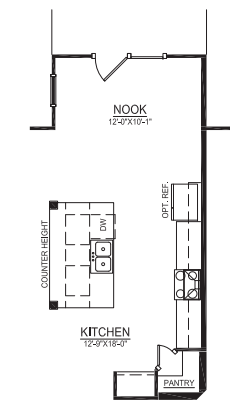
OPTIONAL DINING ROOM



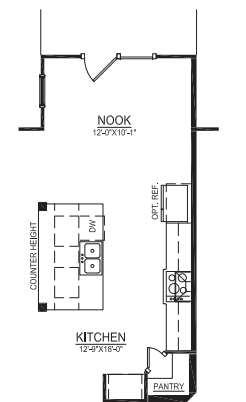
OPTIONAL CHEF'S KITCHEN #1



OPTIONAL PRESTIGE KITCHEN #1



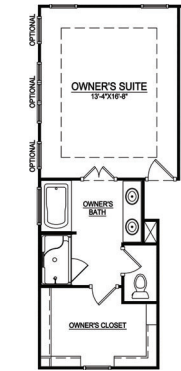
OPTIONAL CHEF'S
KITCHEN #2 W/ NOOK #2



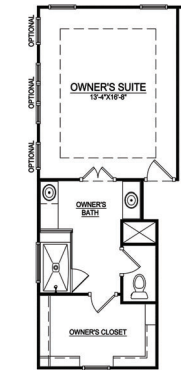
OPTIONAL PRESTIGE
KITCHEN #2 W/ NOOK #2

THE GREYSTONE

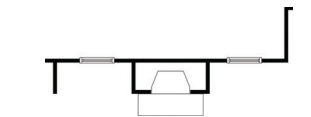
STRUCTURAL OPTIONS



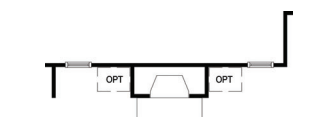
OPTIONAL
OWNER'S BATH #2



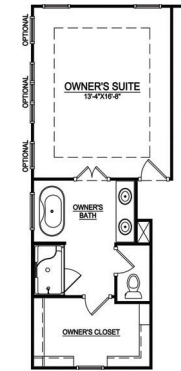
OPTIONAL
OWNER'S BATH #4



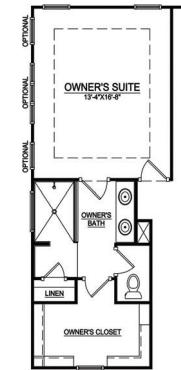
OPTIONAL FULL IN FIREPLACE



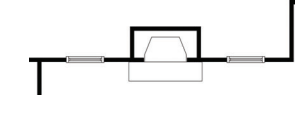
OPTIONAL FULL IN FIREPLACE
W/ WINDOWS FOR BUILT-INS



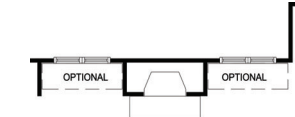
OPTIONAL
OWNER'S BATH #3



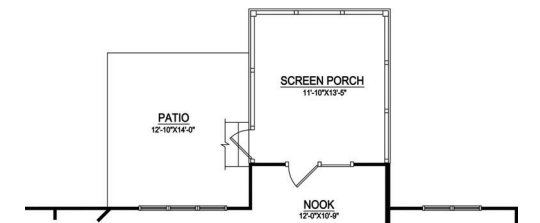
OPTIONAL
OWNER'S BATH #5



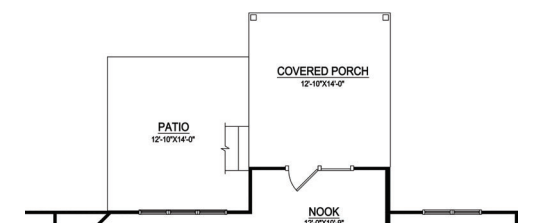
OPTIONAL FULL OUT
FIREPLACE



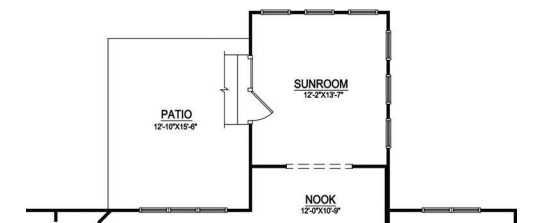
OPTIONAL WINDOWS FOR
FIREPLACE W/ LOW BOOKSHELVES



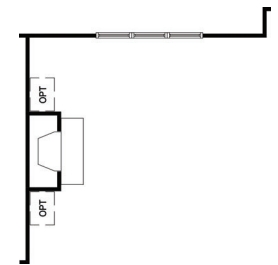
OPTIONAL SCREEN PORCH



OPTIONAL COVERED PORCH



OPTIONAL SUNROOM



OPTIONAL FIREPLACE #2