

FLOORPLAN

Plan C412
Elevation A



American
Legend
HOMES®

WWW.AMLEGENDHOMES.COM



FLOORPLAN

Plan C412



Elevation B with Stone



Elevation C



Elevation C with Stone



Plan C412
Revision 11/03/2020

WWW.AMLEGENDHOMES.COM

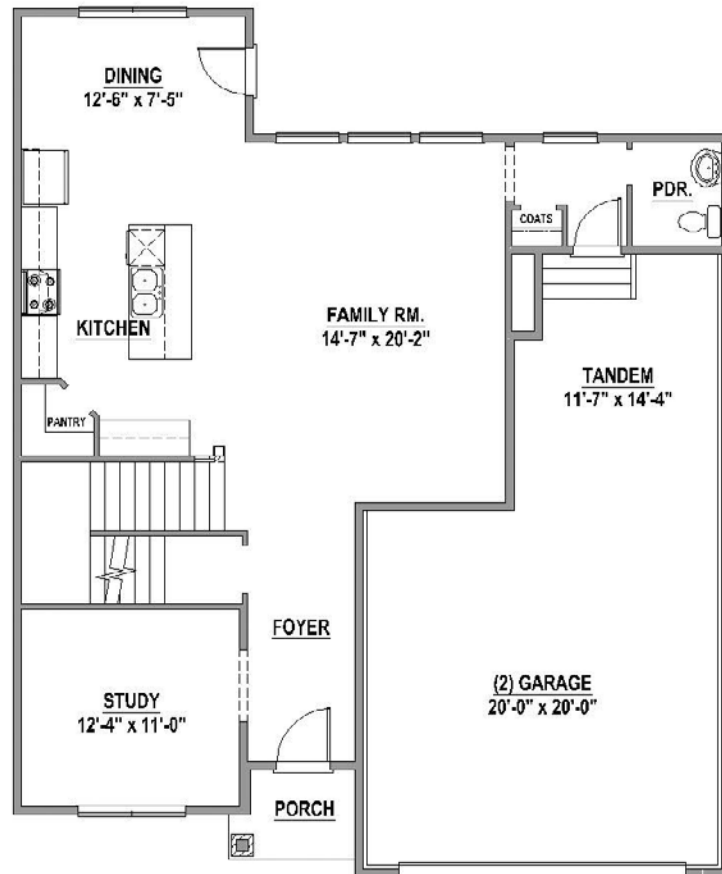
Prices, plans, specifications, square footage and availability are subject to change without notice or prior obligation. Square footages are approximate and may vary upon elevations and/or options selected.
Elevations depicted are an artist's rendering and are subject to change or modification without notice. Not responsible for typographical errors.
Please see a Sales Associate for more information. American Legend Homes and the ALH logo are registered trademarks of American Legend Homes, LLC. © 2020 American Legend Homes. All rights reserved. Effective 2020



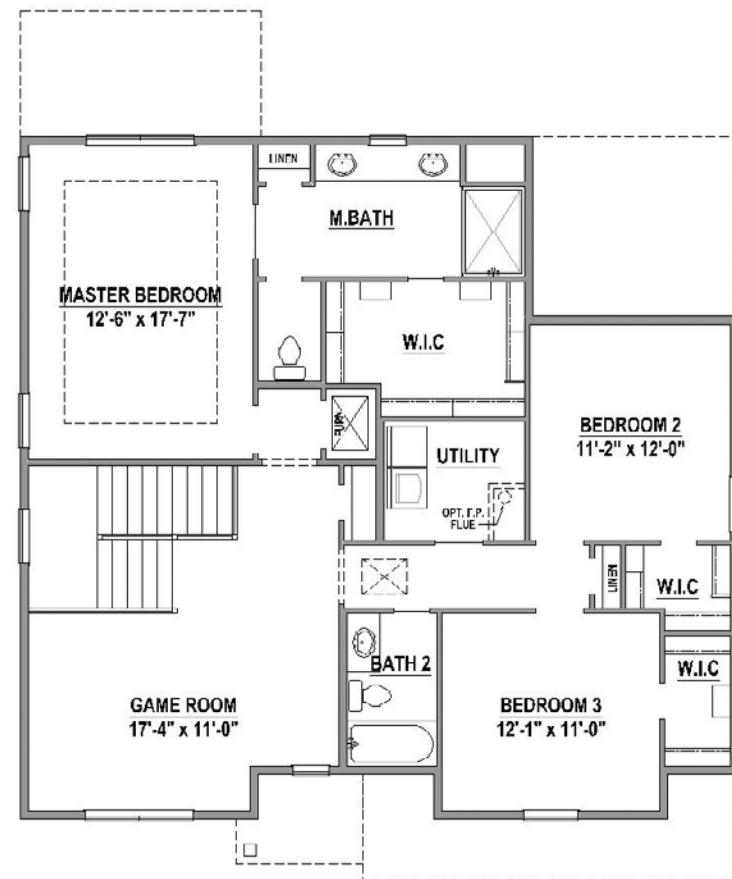
PLAN C412

2, 280 SF

First Floor

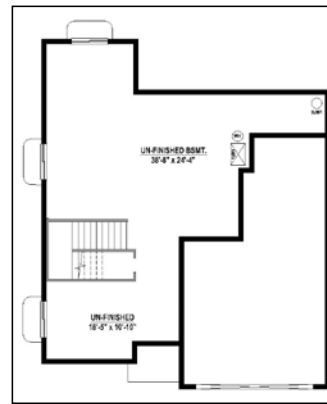


Second Floor



Features:

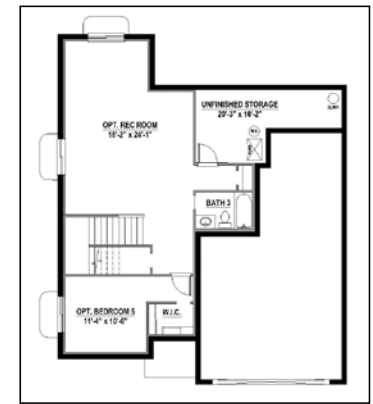
- 2 Story
- 3 Bedrooms
- 2 Full Baths
- 1 Powder Bath
- 1 Dining Area
- 3-Car Tandem Garage



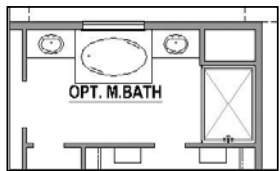
Unfinished Basement
Standard



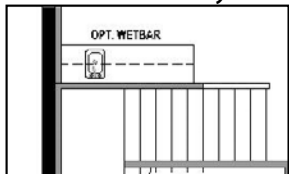
Optional Rec Room
with Full Bath 3 (695 SF)



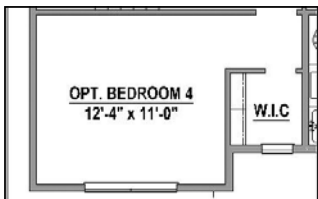
Optional Rec Room,
Bedroom 5 with
Full Bath 3 (905 SF)



Optional
Master Bath Layout



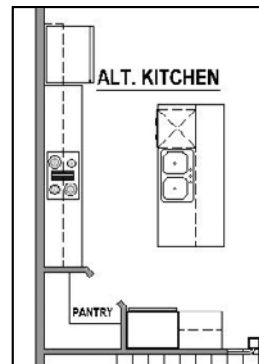
Optional Wet Bar



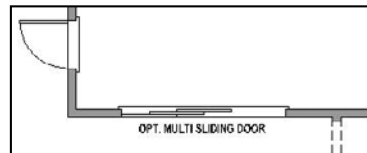
Optional Bedroom 4



Optional Fireplace



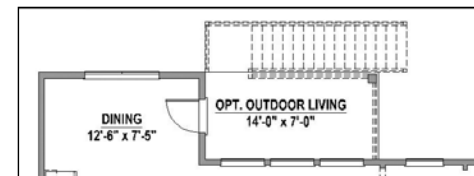
Optional
Alternate Kitchen
Layout



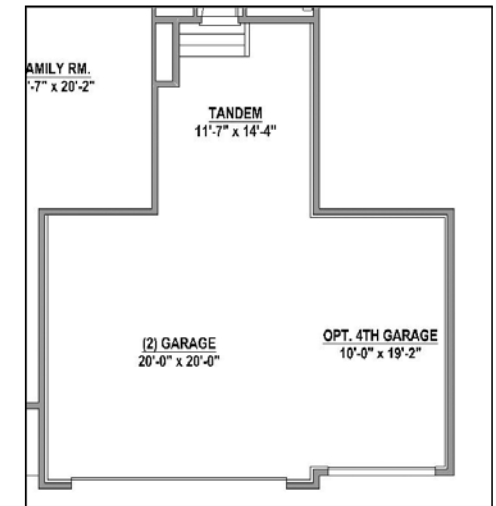
Optional
Multi-Sliding Door



Optional Walk-Out Basement
with Deck Above



Optional Outdoor Living



Optional 4th Car Garage

Projected HERS Score

55

Your home's HERS score is a projected score based on plans.
The lower the number, the more energy efficient the home.
To learn more, visit www.hersindex.com

Annual Savings

\$2,080

*Relative to an average U.S. Home

*This information is presented for education purposes only. The HERS index for a confirmed rating will be determined by a third party HERS rater based on data gathered from on-site observations and, if required, testing of rated features for a home as featured, opinionated, oriented, and/or built.
+Standard new home is based on the RESNET Reference Home definition with a HERS index of 100 (based on the 2006 International Energy Conservation Code)
++Typical resale home is based on the U.S. Department of Energy definition with a HERS index of 130.