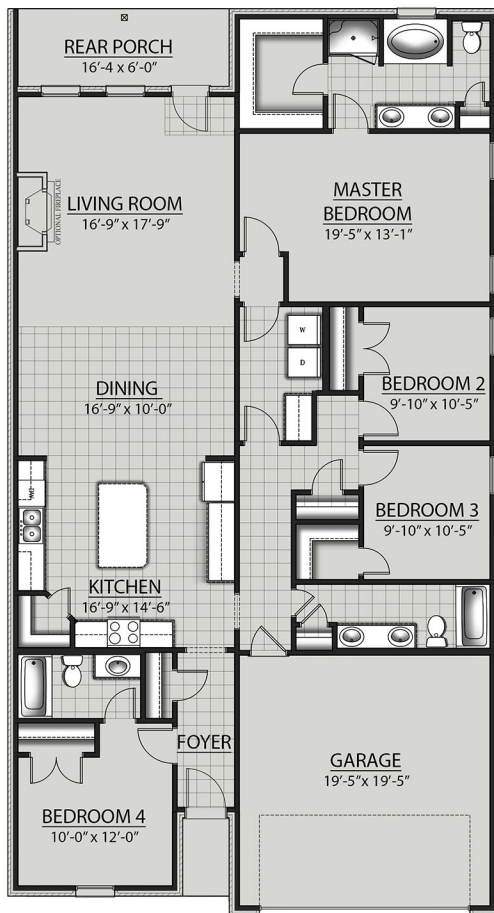


# THE FOLLINA H III PLAN



## Living Area

2097 Square Feet

## Total Area

2634 Square Feet

## Exterior Features

- Brick & Siding Exterior
- Covered Rear Porch
- Two Car Garage

## Interior Features

- Open Floor Plan
- Four Bedrooms, Three Bathrooms
- Recessed Can Lighting in Kitchen
- Walk-In Pantry
- Double Master Vanity
- Master Garden Tub
- Separate Master Shower
- Walk-In Master Closet



Floor plans and elevations are subject to change without notice. Elevations and renderings are artistic conceptions and may not accurately depict home styles. Characteristics, including but not limited to windows, doors, plan configurations and orientations are subject to change per home site. Information contained in this flyer is subject to errors, omissions, changes, withdrawals and prior sales without notice.