

# Isabella



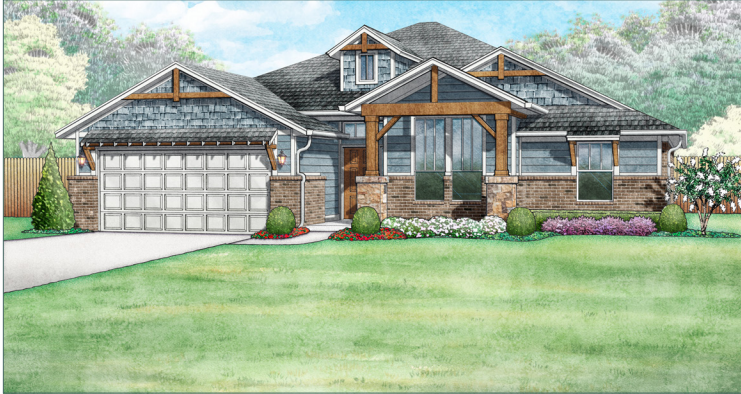
1,776 sq ft



3 bed



2 bath



a

craftsman



b

traditional



e

traditional



f

modern

## FEATURES YOU'LL LOVE ABOUT THIS HOME

master bath with dual vanities  
and garden tub

cozy living room with an  
easy-start fireplace

utility room positioned near the  
secondary bedrooms

master suite with large windows for natural  
light and a 10-foot vaulted ceiling

storage options with two walk-in closets,  
multiple linen closets and a walk-in pantry



**IDEAL**  
homes | neighborhoods®



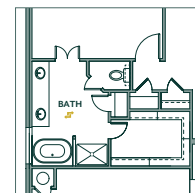
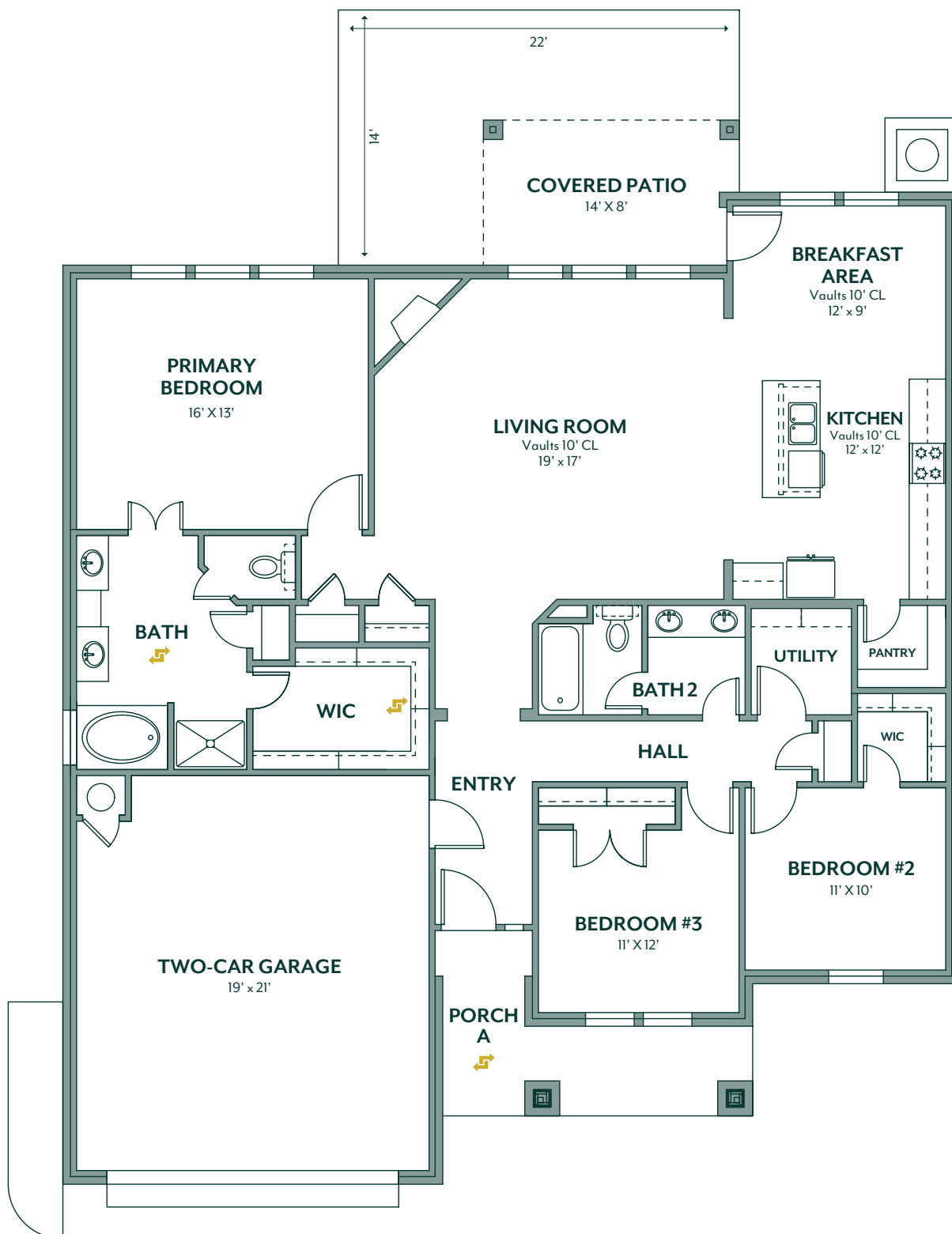
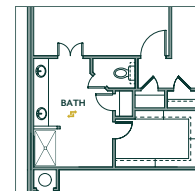
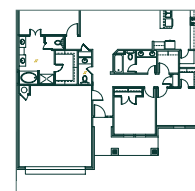
### HERE'S HOW WE DEVELOP EVERY IDEAL FLOOR PLAN:

*We consider everything ...*

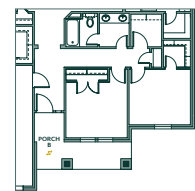
- sight lines & traffic flow
- furniture placement
- usable space
- architectural details
- window placement & size for optimal lighting
- function & low maintenance needs

405.364.1152

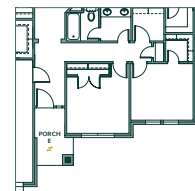
[www.idealhomes.com](http://www.idealhomes.com)

[customize this plan](#)primary bath:  
OPT 1primary bath:  
OPT 2

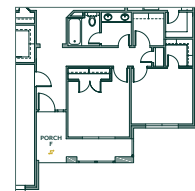
powder bath



porch b



porch e



porch f



Scan the code to view a **photo gallery & included features**  
for the Isabella floor plan