



the ROSEMARY

2 Bedroom Interior Unit

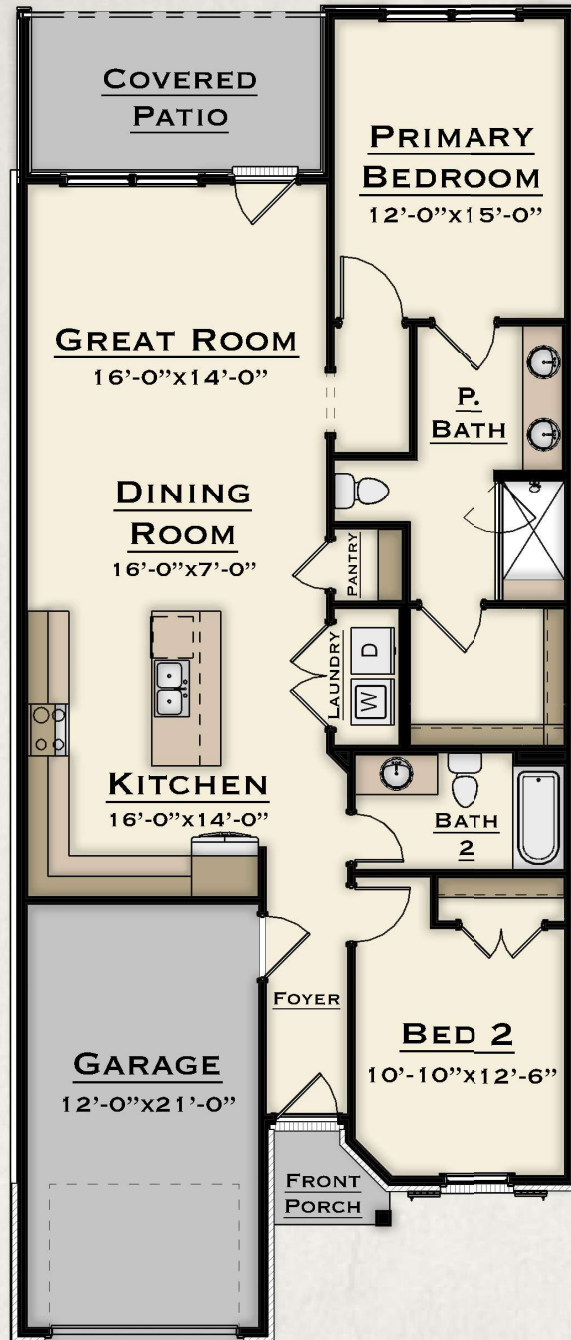
...

*Our homeowners **LOVE** this plan because...*

- the open floor plan of the spacious, single-level home connects the kitchen, dining room, and great room for a functional entertaining space.
- the one-car garage allows homeowners to enter their home without having to walk outside.
- the primary bedroom en suite features double vanities, a walk-in shower, and a spacious closet.
- for privacy, bedroom two is located at the front of the house, away from the primary bedroom.



HARRIS DOYLE
HOMES



Main Level



**Approximate SF: 1,237 SF
(1237)**

Beds/Baths: 2/2

HARRISDOYLE.COM

Keystone

*All renderings are not to scale and are for graphical illustrations and presentation purposes only. Floor plans represent approximate room sizes for furniture placement ideas only and may vary by elevation. All material and colors may vary prior to or during construction, and some features shown may be optional. Plans and their availability are subject to change without notice.
