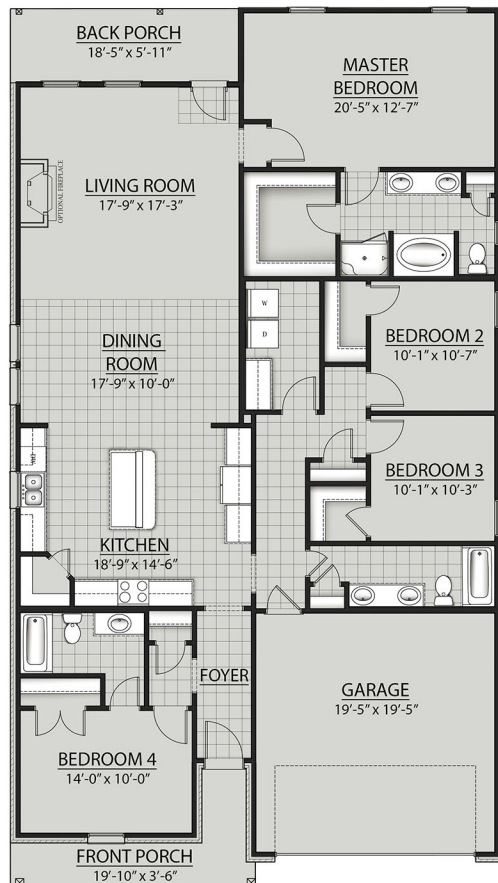


# THE FOXWOOD B II PLAN



## Living Area

2187 Square Feet

## Total Area

2801 Square Feet

## Features

- Open Floor Plan
- Four Bedrooms, Three Full Bathrooms
- Rear and Front Porch
- Two Car Garage
- Brick, Stucco & Siding Exterior
- Optional Fireplace
- Walk-In Closets in 3 of 4 Bedrooms
- Double Master Vanity
- Large Walk-In Master Closet
- Master Garden Tub
- Seperate Master Shower
- Recessed Can Lighting in Kitchen and Living Room



Floor plans and elevations are subject to change without notice. Elevations and renderings are artistic conceptions and may not accurately depict home styles. Characteristics, including but not limited to windows, doors, plan configurations and orientations are subject to change per home site. Information contained in this flyer is subject to errors, omissions, changes, withdrawals and prior sales without notice.