

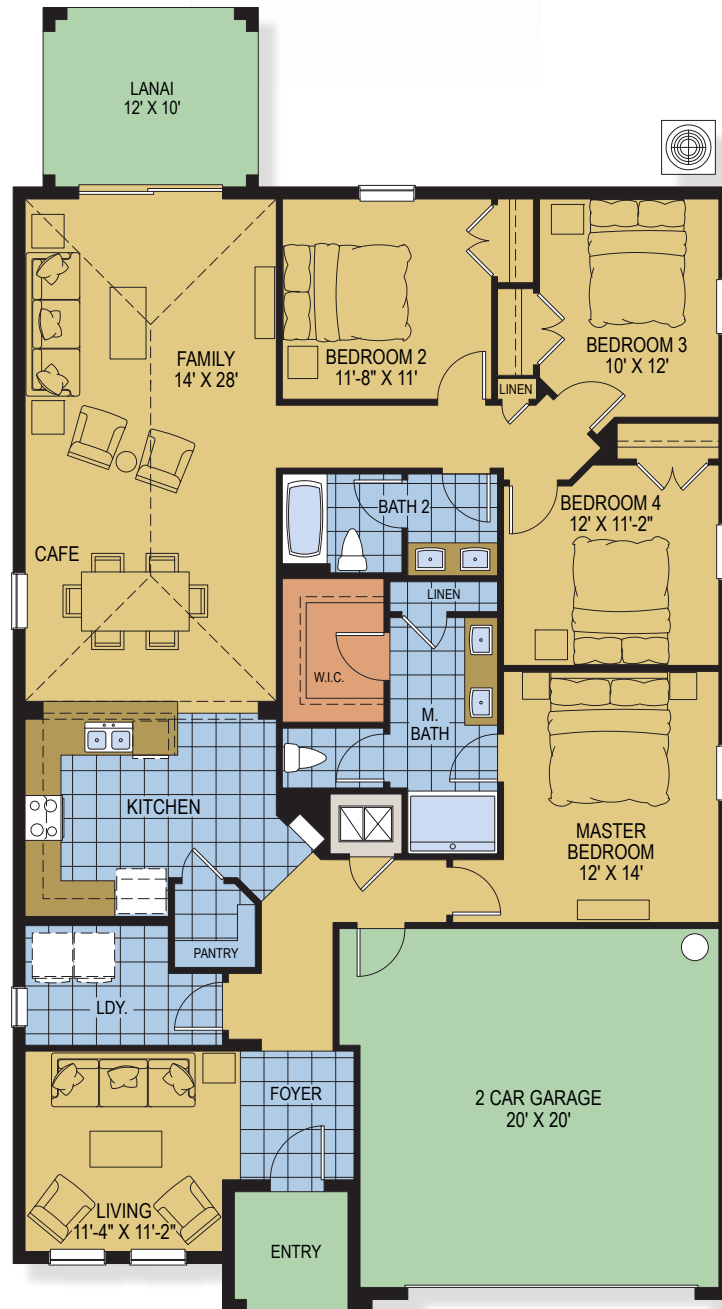


The Lexington

- 4 Bedroom ■ 2 Bath
- 1,979 sq. ft (a/c living)

SQUARE FOOTAGE – BASE

Total A/C:	1,979 sq. ft.
Entry Porch:	44 sq. ft.
Covered Lanai:	120 sq. ft.
2-Car Garage:	429 sq. ft.
TOTAL:	2,572 sq. ft.



Additional Structural Options Available:

- Extended Ceilings (9'4")
- Extended Covered Lanai
- 3-Car Garage*

Our Legacy is Building Yours



*Additional "Snap-On" Garage Option is only available on select homesites in select communities. Please consult your Hanover New Home Advisor for information on community and homesite availability. Plans and elevations are artist's renderings and may contain options which are not standard and may not be available on all models, model types or homes. Developer reserves the right to make changes to these floor plans, specifications, dimensions and elevations without prior notice. Stated dimensions and square footage are approximate and should not be used as representation of the home's size. Square footage calculations are from the outside of exterior walls and include interior partition walls. Due to normal construction tolerances, square footages and dimensions may vary from those shown on floor plans or otherwise indicated. Furniture layouts are for illustration purposes only. Prices, promotions, features, amenities and availability subject to change without notice. CGC#1507971. Copyright ©2018 Hanover Family Builders. All rights reserved.



Elevation 1



Elevation 1 shown w/optional stone



Elevation 2



Elevation 2 shown w/optional stone



605 Commonwealth Avenue • Orlando, Florida 32803 • 888.842.9266 • HanoverBuilds.com



*Plans and elevations are artist's renderings and may contain options which are not standard and may not be available on all models, model types or homes. Developer reserves the right to make changes to these floor plans, specifications, dimensions and elevations without prior notice. Copyright ©2017 Hanover Family Builders. All rights reserved.