

# DESIGN

## ROUNDROCK - 6236



A



B



C



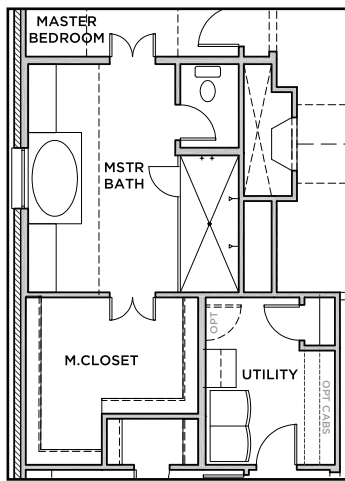
D



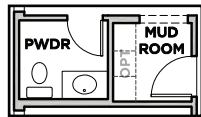
E



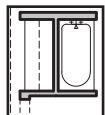
All Product including Architectural Designs, ©2000-2026, Shaddock Homes, LTD., All rights reserved. There may be existing or future design changes made in the floorplans, building products, methods, square footage, or designs used in our homes that are not reflected in our information, sales center or in our models. The materials, designs, square footages, features, and amenities shown are based upon current development plans, which are subject to change without notice. No guarantee is made that the designs, square footages, materials, features, and amenities depicted by artist's renderings or otherwise described will be built, or if built, will be of the same type, size or nature as depicted or described. All stone elevations, metal roofs, cast stone door and window headers and solid sawn cedar posts are optional, but available via change order. Front doors will match the specification sheet or chosen door upgrade. Prices and terms subject to change without notice. [REVISION DATE:1.24.24](#)



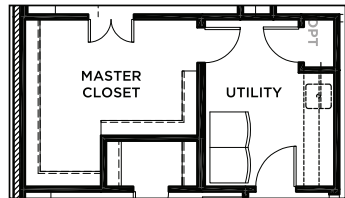
OPT MASTER SHOWER  
w/LARGER MASTER  
CLOSET



OPT PDR ILO  
CLOSET  
(NOT AVAILABLE W/ STUDY 2)



OPT BUTLER'S  
PANTRY ILO CLO

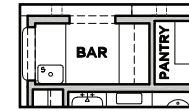
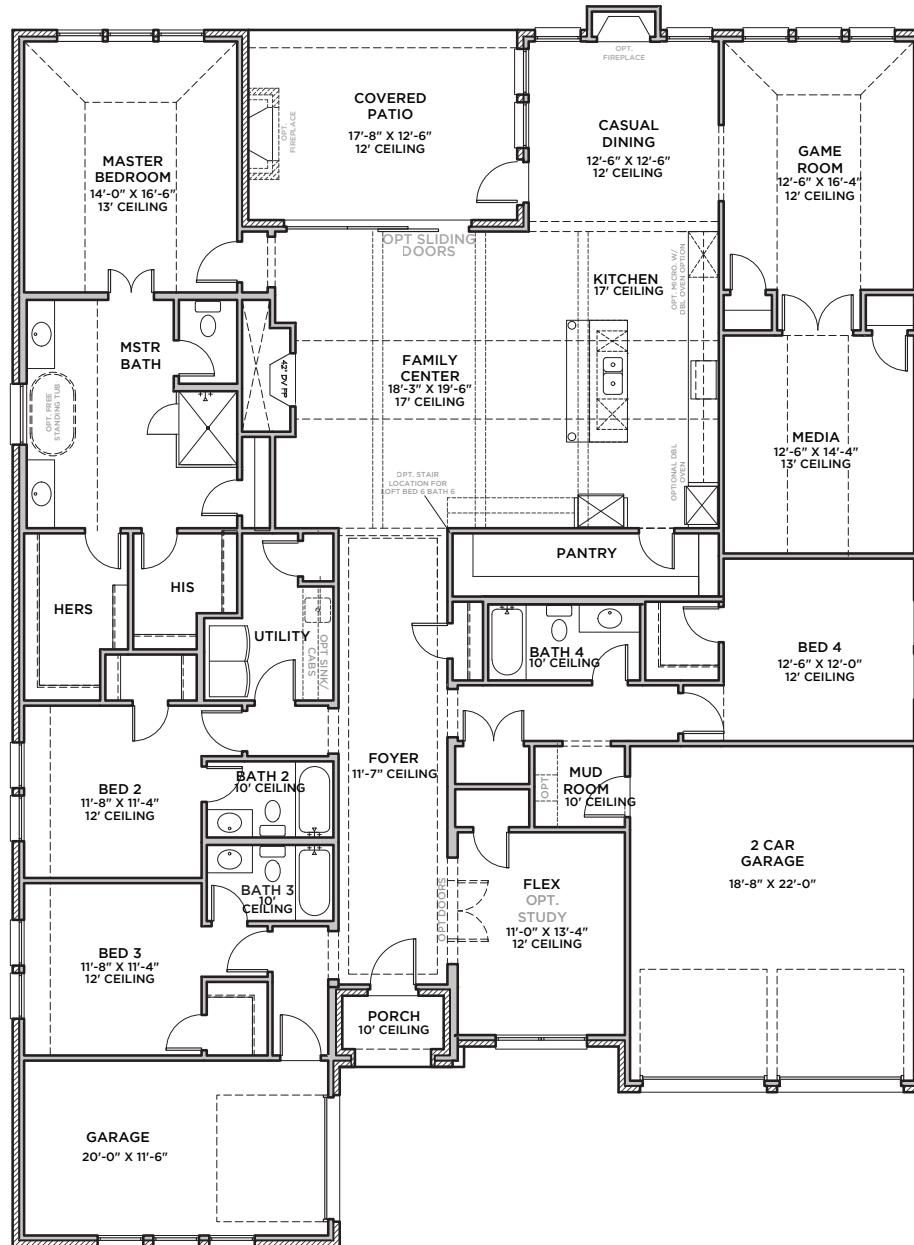


OPT LARGER  
MASTER CLOSET

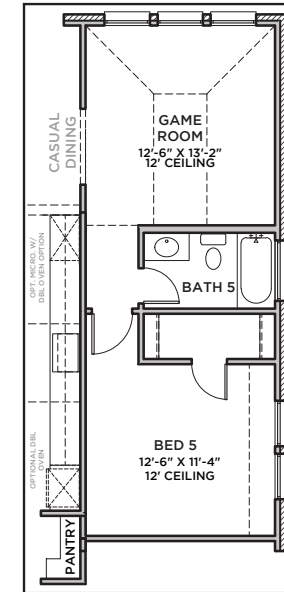
## ROUND ROCK 6236<sup>PP</sup> (1,24,24)

S.FT	3402
First Floor	3402
<b>Total Living Area</b>	<b>3402</b>
3 Car Garages	688
Covered Patio	220
Covered Porch	34
Total Area	4344
<b>OPT</b>	
Ext. Covered Patio	80
Bed 5/Bath 5	253
Stairs, Bed 6/Bath 6	557

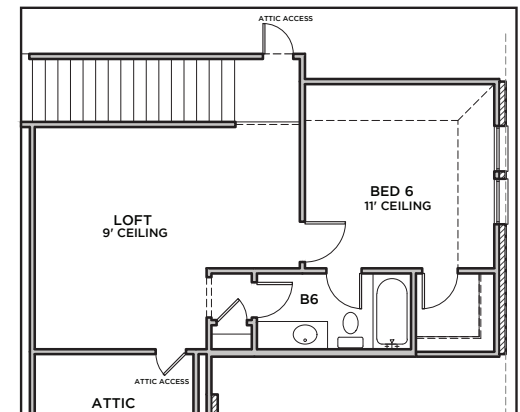
SHADDOCK HOMES



OPT BAR @ FAMILY  
CENTER  
(NOT AVAIL. W/ LOFT BED 6/NO OPT)



OPT BED 5 & BATH  
5 ILO MEDIA



OPT. LOFT W/  
BED 6 & BATH 6  
SECOND FLOOR PLAN