

The Hayworth

BY TODD HOMES LLC

TODD
Homes
llc.com
Affordable Luxury



The Hayworth

SPECIAL FEATURES:

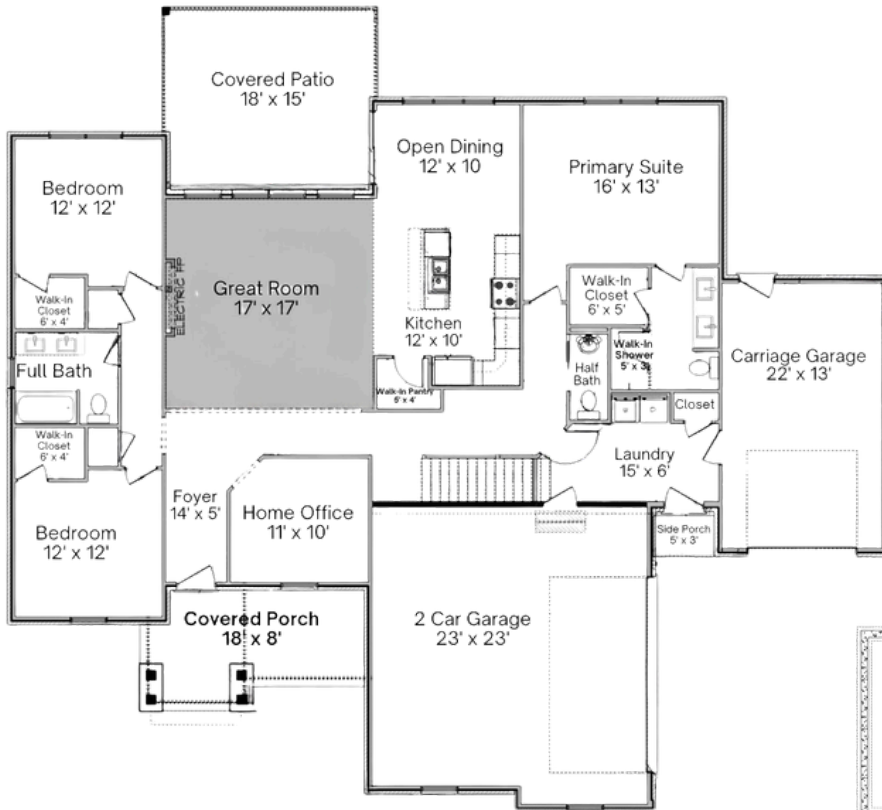
- 3BR, 2.5BA, 2026 Square Foot Luxury Ranch
- Optional 3 Car Garage!
- Every Detail has been Meticulously Designed to Offer Unparalleled Comfort
- Open Great Room with Towering 10ft Ceiling and Custom Fireplace Walks Out to a Large Covered Patio
- The High-End Kitchen, a Culinary Enthusiast's Paradise, Showcasing a Magnificent Island, Perfect for Meal Prep and Casual Dining
- The Primary Suite Serves as a Tranquil Retreat, Featuring a Luxurious Walk-In Shower that Promises a Spa-Like Experience
- Lower Level with Full Bath Rough-In
- Experience the Perfect Blend of Luxury & Smart Living

 3
Bedrooms

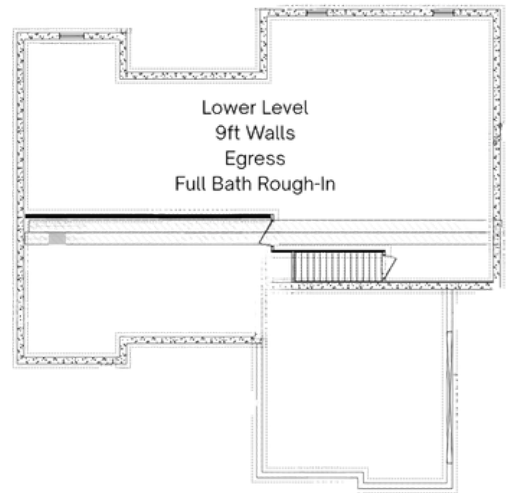
 2.5
Bathrooms

 3
Garage

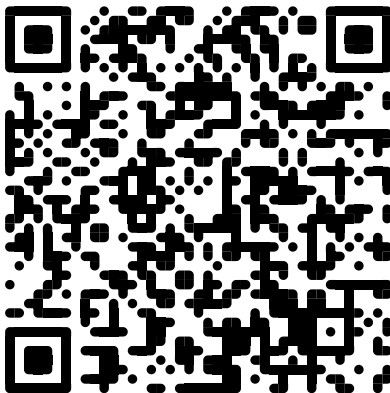
 2026
Square Feet



Main Level



Lower Level



The Hayworth



Visit Todd Homes

Copyright 2026 Todd Homes LLC. All rights reserved. Please be aware that, in line with our dedication to ongoing product enhancement, we reserve the right to alter our home pricing, availability, features, choice of product brands, dimensions, architectural details, and design specifications. This brochure serves solely for illustrative purposes and does not form any part of a legally binding contract. Room sizes approximate.