

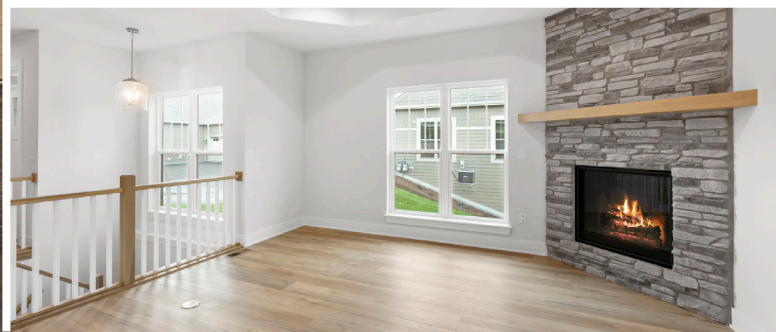


HALEN
HOMES

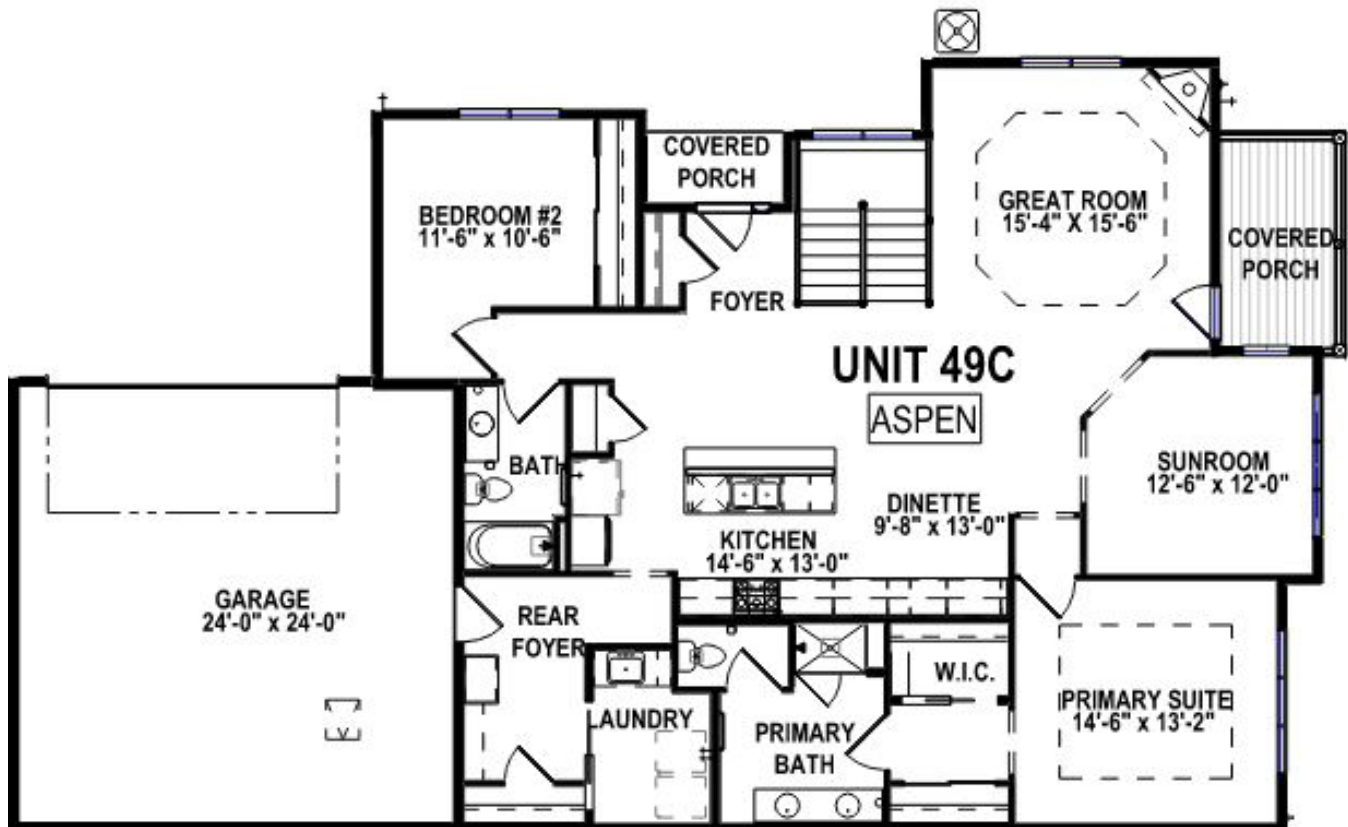
414-219-0740 | HalenHomes.com

THE ASPEN | \$684,900

Lot 14 (49) in The Reserve at Parkway Ridge
N28W25285 Parkway Ridge Cir-C, Pewaukee
1,863 Sq Ft | 2 Bedrooms | 2 Bathrooms | 2 Car Garage

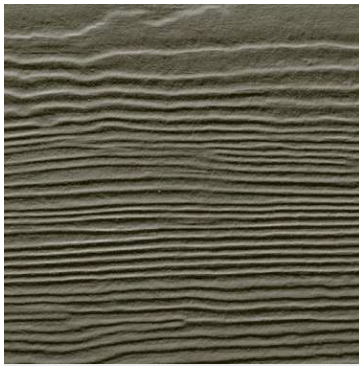


For more information or to schedule a showing contact:
Janeen Wnuk | 262-717-5414 | jwnuk@halenhomes.com





Roof Shingles:
Weathered Wood



Siding:
Timber Bark



Exterior Shake:
Timber Bark



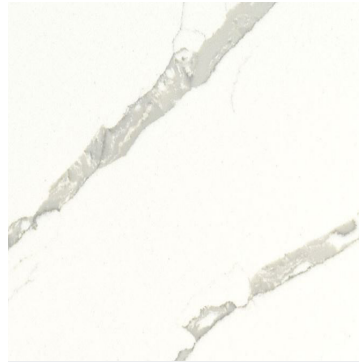
Front Door:
SW7630 Raisin



Fireplace Masonry:
QR Stone Rustic Ledgerstone
Sierra Gray



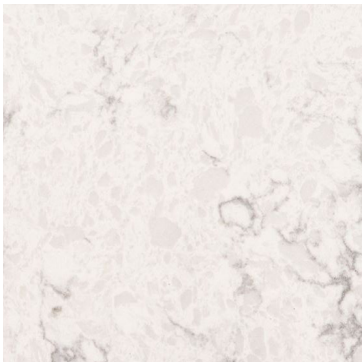
Cabinetry:
Painted Maple - Mist
Island - Maple - North Pier



Kitchen Countertops:
Quartz- Beetoven



Flooring:
Inspired LVP Liberty Park -
Napa



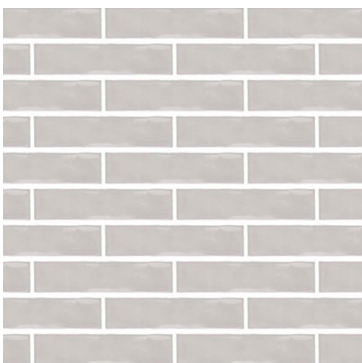
Bathroom Countertops:
Quartz - Colesseum



Bathroom Flooring:
13x13 Arena Gray



Primary Shower Niche:
Famed penny round -
Glamour



Kitchen Backsplash:
3x12 Songbird Quill Grey



Carpeting:
Dwellings Accolade -
Rhinstone



Kitchen Plumbing:
Kohler Simplice -
Vibrant Stainless

Home elevation renderings and color selection sample images are for illustration purpose only. Digital representation of colors may vary from the actual product. Builder reserves the right to make changes without notice. Price accurate as of 08/18/2025.



HalenHomes.com