

Lopez 3-Car

- 5 BEDROOMS ■ 3 BATHS
- 2,755 SF (A/C LIVING) ■ 3-CAR



Floor Plan

SQUARE FOOTAGE - BASE PLAN

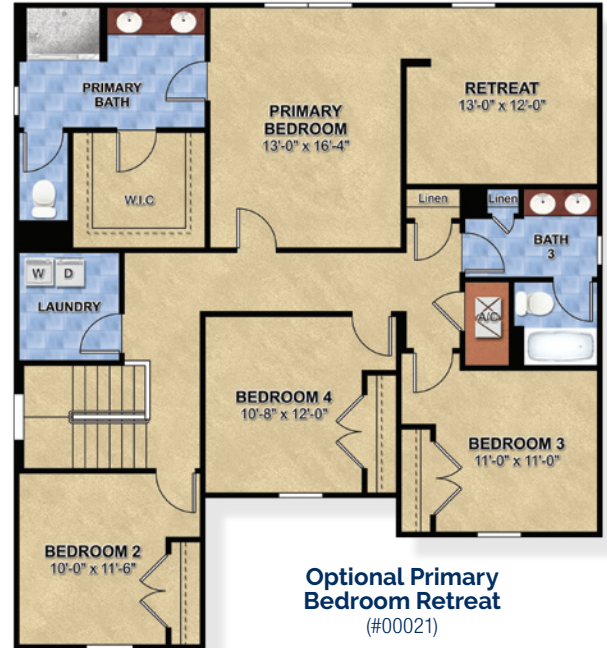
A/C Living.....	2,755 sf
First Floor A/C.....	1,297 sf
Second Floor A/C.....	1,458 sf
3-Car Garage.....	696 sf
Covered Lanai.....	120 sf
Entry Porch.....	48 sf
Total Under Roof	3,619 sf



Optional Extended Covered Lanai
(#00076)



Optional Garage Service Door
(#00001)



Optional Primary Bedroom Retreat
(#00021)



SECOND FLOOR