



This home has everything you need for your family's convenience and comfort. The open floor plan offers an abundance of room to spread out and entertain: large great room and dining areas, an adaptable flex room, front porch, and patio. There's plenty of storage with the large mud room and ample closet space on both levels. And never haul laundry again with the laundry room and linen closet just steps away from the bedrooms.

## Features



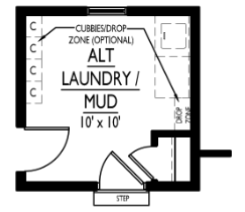
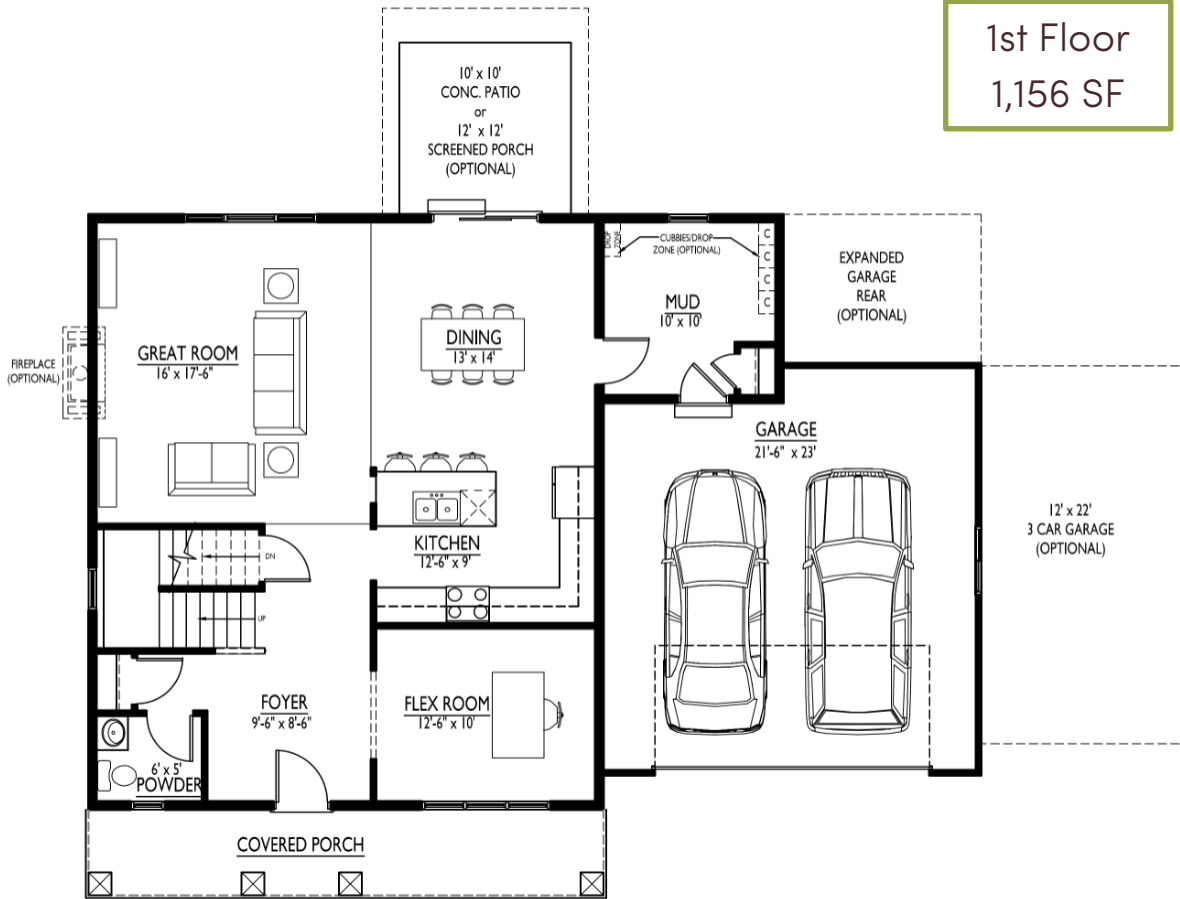
- Nine foot first floor ceiling height
- Open floor plan
- Flex room for office, formal dining, playroom, etc.
- Spacious primary bedroom suite features private bath, tray ceiling, and large walk-in closet
- Second floor laundry and linen closet
- Large mudroom off garage
- Ten foot by ten foot concrete patio

## Options

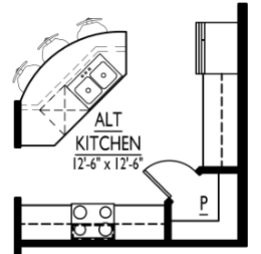


- Eight foot nine inch basement foundation walls
- Fireplace in great room
- Alternate kitchen with walk-in pantry
- Tile shower in primary bathroom
- Alternate primary bathroom with tub and expanded walk-in closet
- Built-in cubbies and/or drop zone in mudroom
- Alternate powder room with shower
- Finished deck or screened porch
- Finished lower level

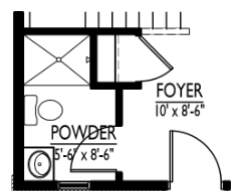
## 1st Floor 1,156 SF



ALT. LAUNDRY/MUD

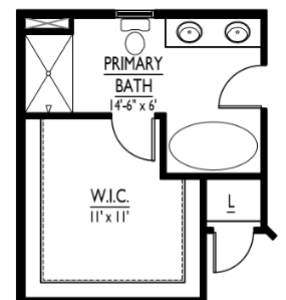


ALT. KITCHEN

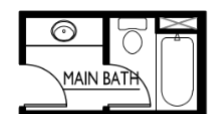


ALT. POWDER ROOM

## 2nd Floor 1,094 SF



ALT. PRIMARY BATH



ALT. MAIN BATH