

REECE HOMES

5475 WOODLAND PARK



WOODLAND PARK NEIGHBORHOOD

4 BDRM | 3 1/2 BATH | 3120 SF

Designed for modern living, the “Sophie” features 4 bedrooms, 3.5 baths, a private study, and a spacious game room. The open-concept layout seamlessly connects the living, kitchen, and dining spaces, creating the perfect setting for entertaining and everyday life. A luxurious master suite with a spa-inspired bath and separate closets offers a private retreat. Elevated ceilings and thoughtfully designed details add character and style throughout. Complete with a 3-car garage, mudroom, covered outdoor living, and functional storage spaces, this home blends comfort, beauty, and practicality.

Landscape selections are dependent on community and standard specifications.

FEATURES:

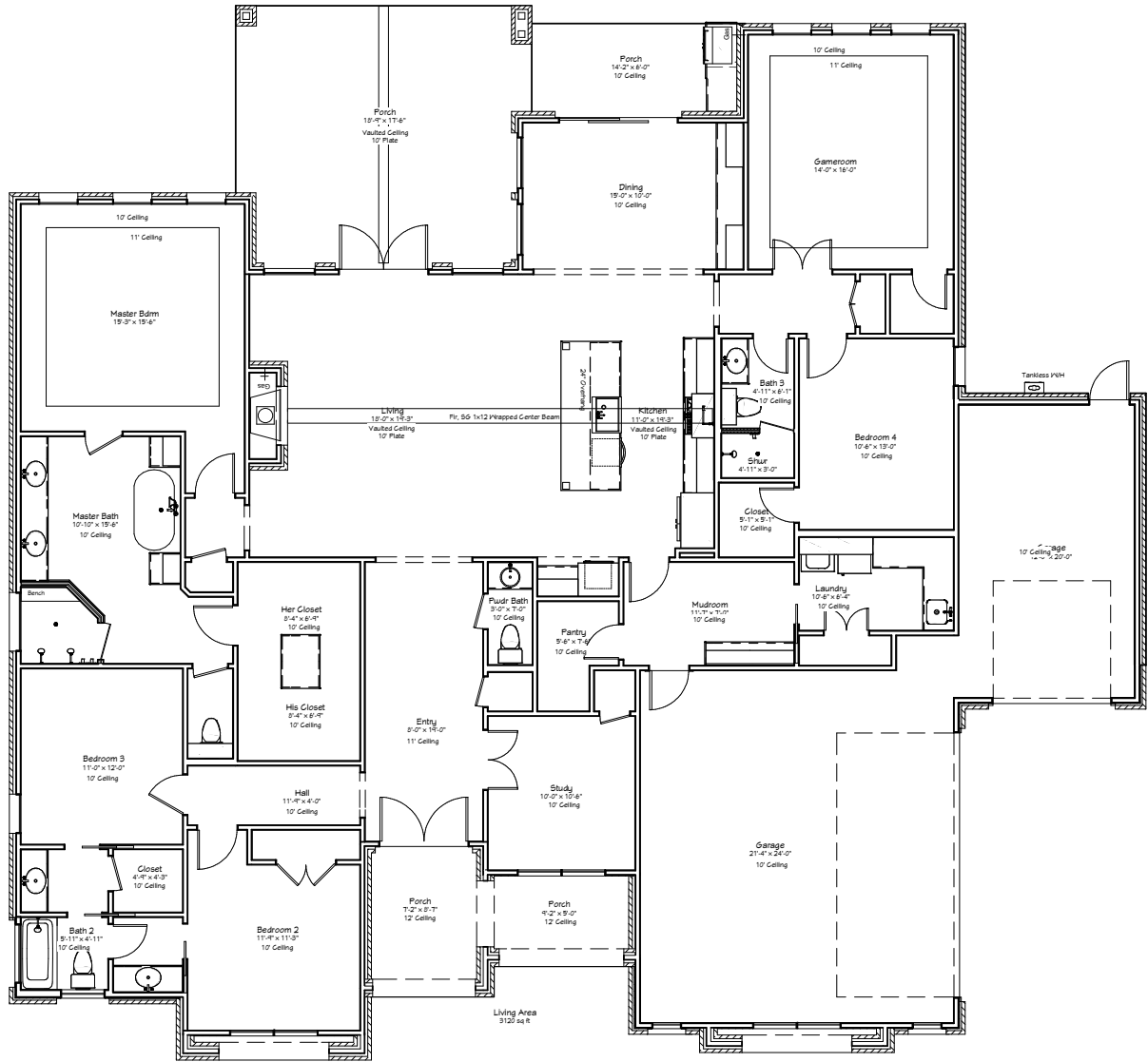
Custom Cabinetry | Quartz & Granite Countertops
Hardwood Flooring | Stainless Appliances | Custom Design Elements

Come Make Our House, Your Home.



Reece Homes
979-635-4800
info@reece-homes.com

5475 WOODLAND PARK



4 BDRM | 3 1/2 BATH | 3120 SF

Built the way we live | At Reece Homes we take great care in personalizing every home to meet each family right where they are. Truly unique, the Reece Homes building experience provides in house drafting, personalized design assistance, and constant communication throughout construction.

WWW.REECE-HOMES.COM