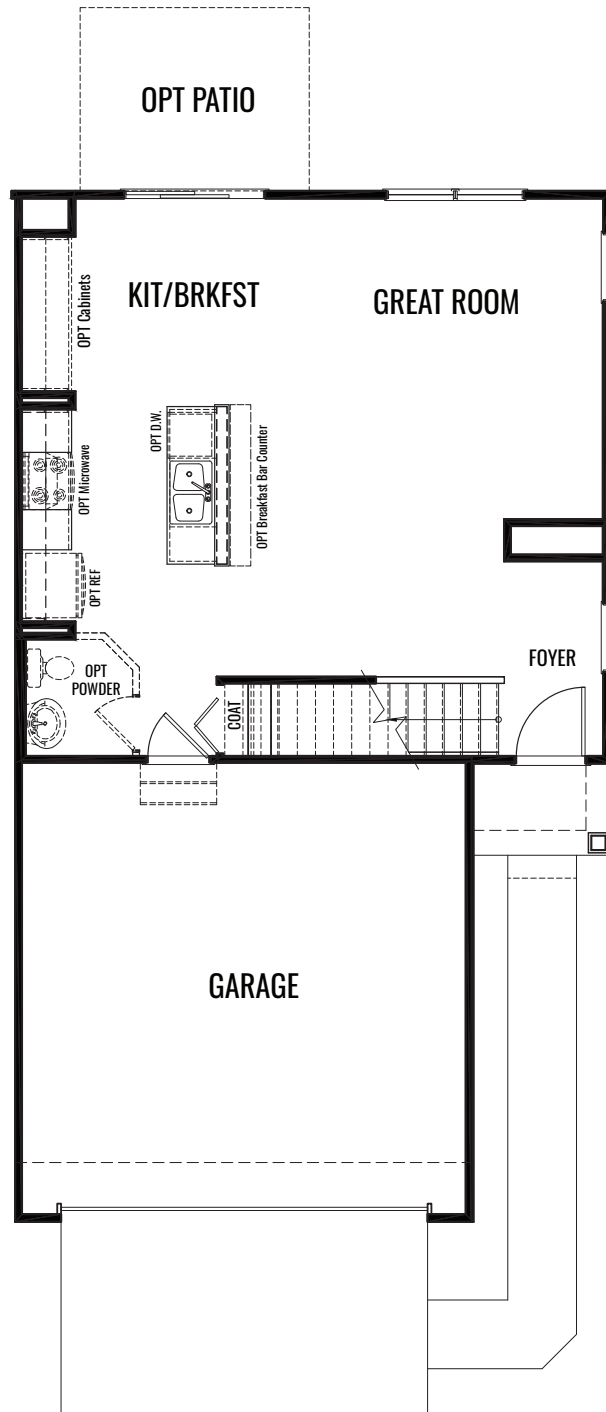


## THE LINDEN

1,616 Square Feet | 2-3 BDRM | 1-2.5 BATH

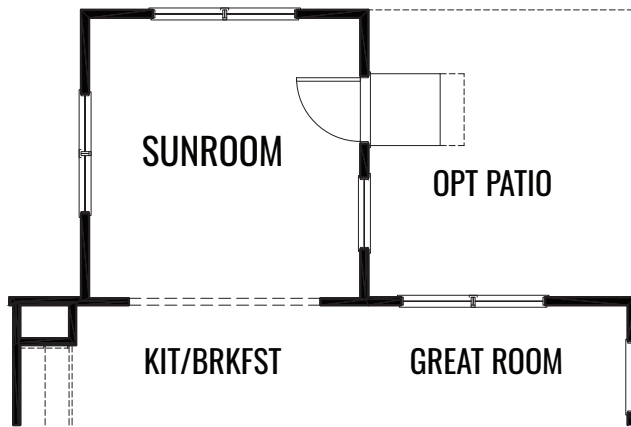


**FIRST FLOOR**

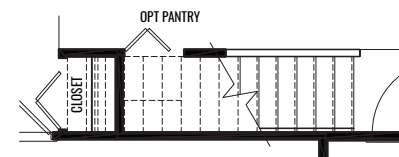
[www.providencehomes.net](http://www.providencehomes.net)

## THE LINDEN

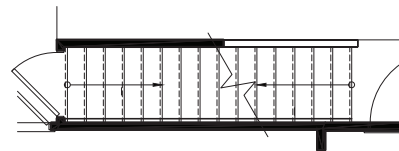
1,616 Square Feet | 2-3 BDRM | 1-2.5 BATH



OPT SUNROOM



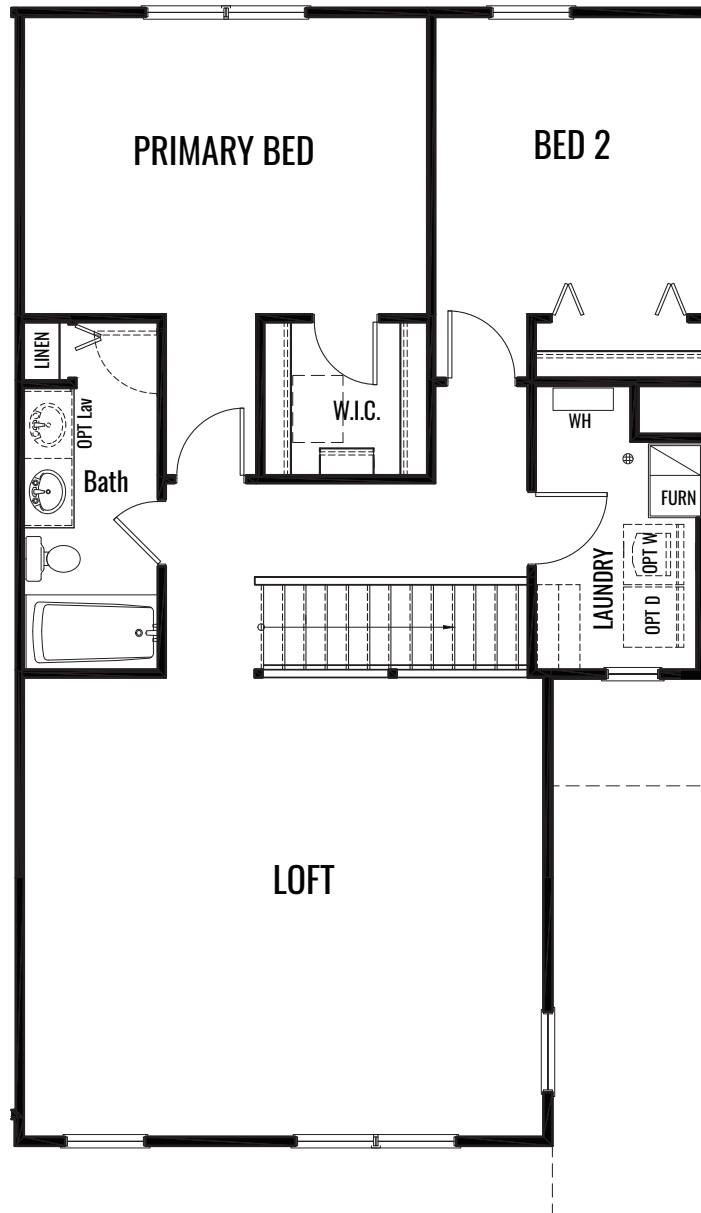
OPT CLOSET



OPT BASEMENT

## THE LINDEN

1,616 Square Feet | 2-3 BDRM | 1-2.5 BATH

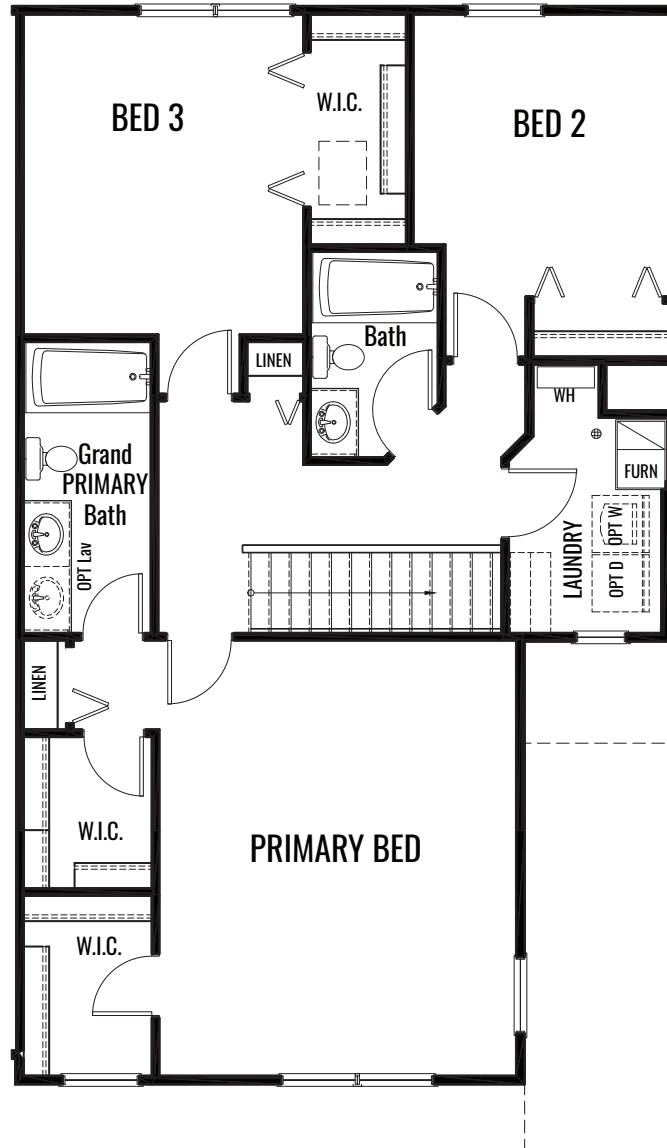


SECOND FLOOR

[www.providencehomes.net](http://www.providencehomes.net)

## THE LINDEN

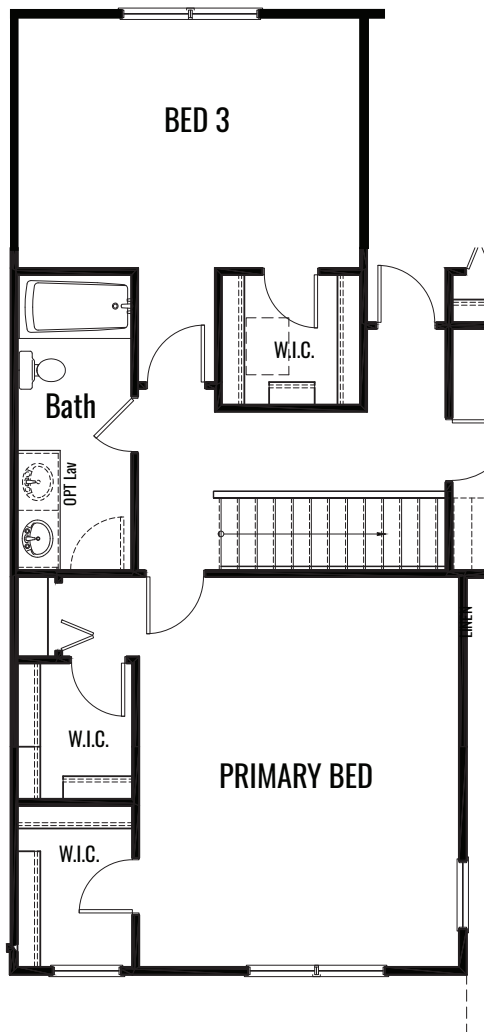
1,616 Square Feet | 2-3 BDRM | 1-2.5 BATH



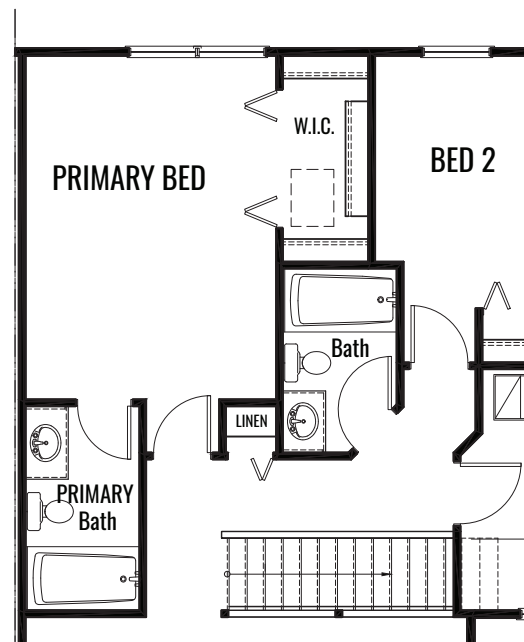
**OPT GRAND PRIVATE BATH**

## THE LINDEN

1,616 Square Feet | 2-3 BDRM | 1-2.5 BATH



**OPT GRAND PRIMARY BEDROOM**



**OPT PRIVATE BATH**

# STONE MILL TOWNHOMES



## THE LINDEN

1,616 Square Feet | 2-3 BDRM | 1-2.5 BATH



**ELEVATION "A"**

[www.providencehomes.net](http://www.providencehomes.net)

Artist's renderings may vary in precise detail as compared to actual construction. All dimensions are approximate. Providence Real Estate Development, LLC. DBA Providence Homes in an effort to improve its product, reserves the right to make changes without notice. Actual home may be built as shown or reversed as dictated by engineered site plan. © Copyright 2025, Providence Real Estate Development, LLC.

# STONE MILL TOWNHOMES



## THE LINDEN

1,616 Square Feet | 2-3 BDRM | 1-2.5 BATH



**ELEVATION "B"**

[www.providencehomes.net](http://www.providencehomes.net)

Artist's renderings may vary in precise detail as compared to actual construction. All dimensions are approximate. Providence Real Estate Development, LLC. DBA Providence Homes in an effort to improve its product, reserves the right to make changes without notice. Actual home may be built as shown or reversed as dictated by engineered site plan. © Copyright 2025, Providence Real Estate Development, LLC.

# STONE MILL TOWNHOMES



## THE LINDEN

1,616 Square Feet | 2-3 BDRM | 1-2.5 BATH



### ELEVATION "C"

AVAILABLE ONLY WHEN PAIRED WITH GRAYSON

[www.providencehomes.net](http://www.providencehomes.net)

Artist's renderings may vary in precise detail as compared to actual construction. All dimensions are approximate. Providence Real Estate Development, LLC. DBA Providence Homes in an effort to improve its product, reserves the right to make changes without notice. Actual home may be built as shown or reversed as dictated by engineered site plan. © Copyright 2025, Providence Real Estate Development, LLC.