

Drummond



1,234 sq ft



3 bed



2 bath



a

mountain cottage



b

craftsman



e

modern mountain



f

modern

FEATURES YOU'LL LOVE ABOUT THIS HOME

designed with beauty
and function in mind

centralized utility room
for efficiency

mudroom adds interest and
organization to both entries

covered patio perfect
for outdoor entertaining

master suite with a three-piece
bath and walk-in closet



IDEAL
homes | neighborhoods®



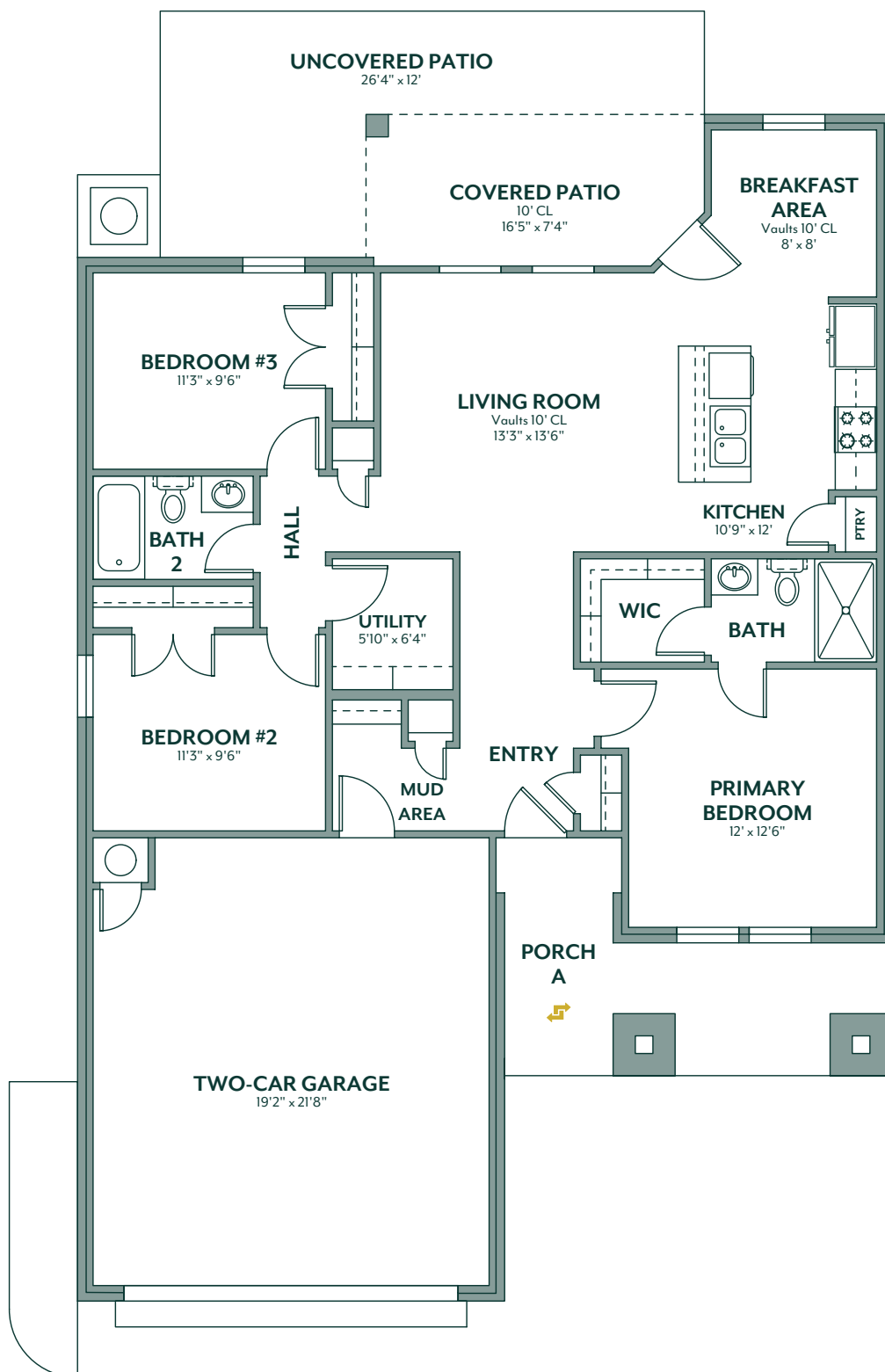
HERE'S HOW WE DEVELOP EVERY IDEAL FLOOR PLAN:

We consider everything ...

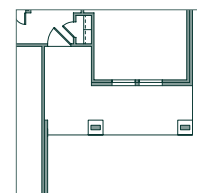
- sight lines & traffic flow
- furniture placement
- usable space
- architectural details
- window placement & size for optimal lighting
- function & low maintenance needs

405.364.1152

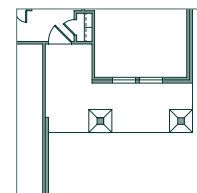
www.idealhomes.com



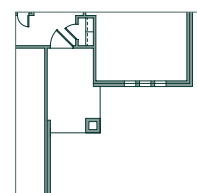
✓ customize this plan



porch b



porch e



porch f



Scan the code to view a **photo gallery & included features**
for the Drummond floor plan