



welcome home

BISHARD HOMES

639B 22ND STREET

**BISHARD
HOMES**

WHY BISHARD HOMES?

More than 20 years after Bishard Development Corporation was introduced, we continue the tradition that the Bishard brothers began.

Over the years, the area has changed. Design, materials, and technology have evolved, enabling us to build

homes that “perform”—with smart technology, energy efficiency, and design innovations that increase comfort and convenience.

Still, the desire for the serenity that can only be experienced at the shore remains the same—along with the integrity of the people who make Bishard Homes a success. From your first inquiry through finalizing your choices and following the path to ownership, we will smoothly navigate you through every step.

We listen. We offer ideas. We use our experience to bring your dream to life.

Bishard Homes is not our business. It's our pleasure.



Bishard Homes and Bishard Builders have an outstanding reputation for building quality affordable housing and standing firmly behind the quality construction they construct!

-MICK, VIRGINIA BEACH

Inspire at the ViBe

22ND ST AND CYPRESS AVE

Embrace the ultimate beach lifestyle at Inspire at the ViBe, located only half of a mile from the Virginia Beach boardwalk and all it has to offer. Not only that - you are also situated on the outskirts of the vibrant ViBe District, which is a haven for local shops, scrumptious eateries and everyone's favorite, the Old Beach Farmers Market. With three different three-story floor plans to choose from, each of which features an open-concept second floor living area, Inspire at the ViBe has something for everyone. Our floor plans offer 3-4 bedrooms and 3.5 baths along with ample space for storing all of your beach gear and bikes with a garage or storage area.



**BISHARD HOMES**

**all pricing, products, and availability are subject to change without notice. color selections may differ*

Inspire at the ViBe

639B 22ND STREET

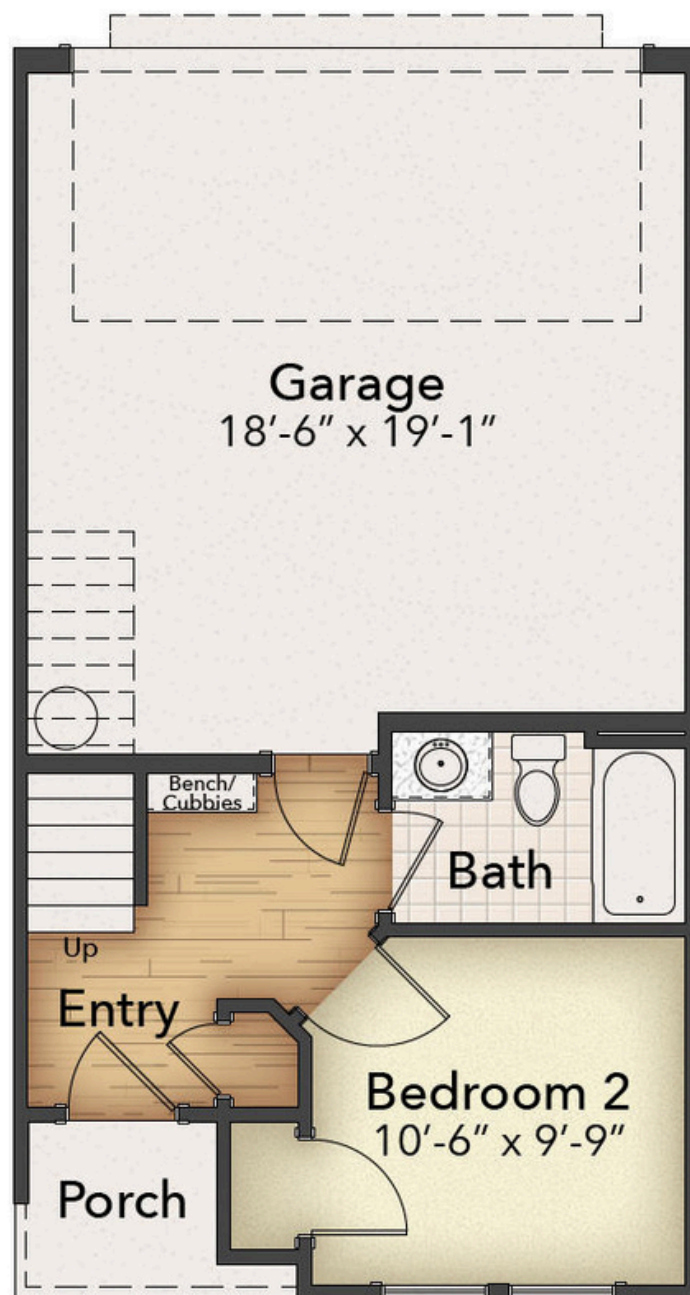


**all pricing, products, and availability are subject to change without notice.*

Cape Charles

639B 22ND STREET

FIRST FLOOR

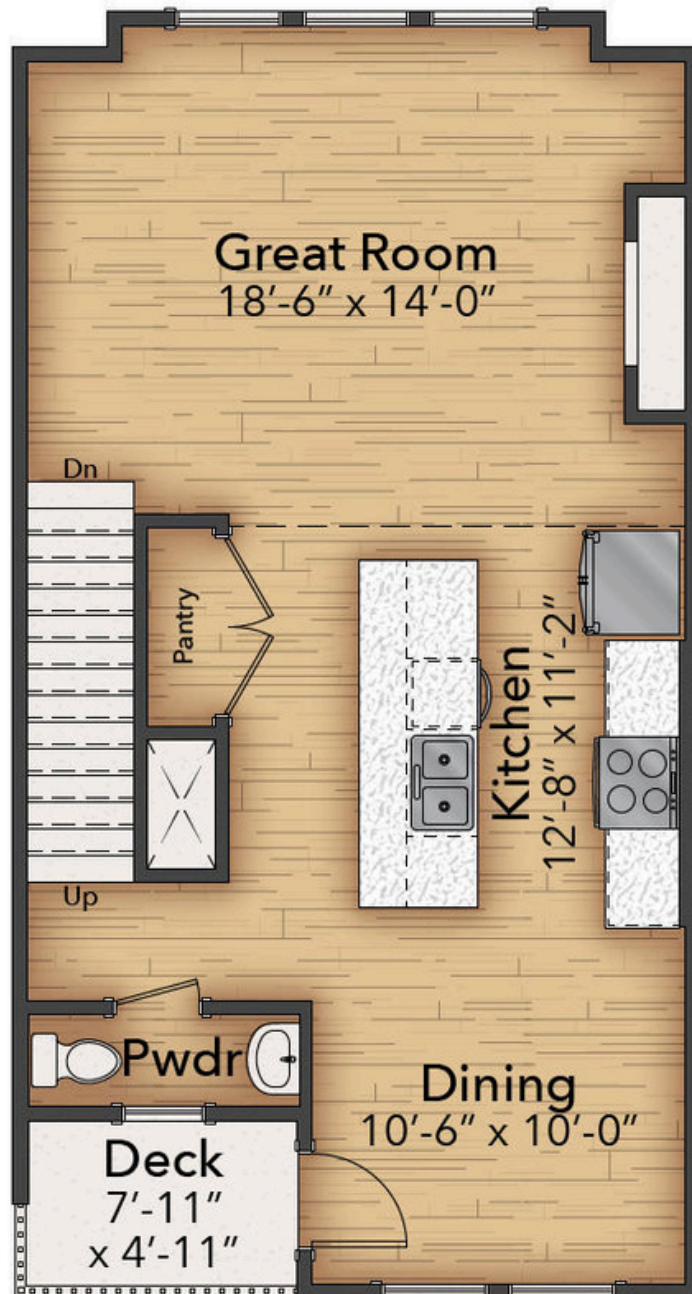


**all pricing, products, and availability are subject to change without notice.*

Cape Charles

639B 22ND STREET

SECOND FLOOR

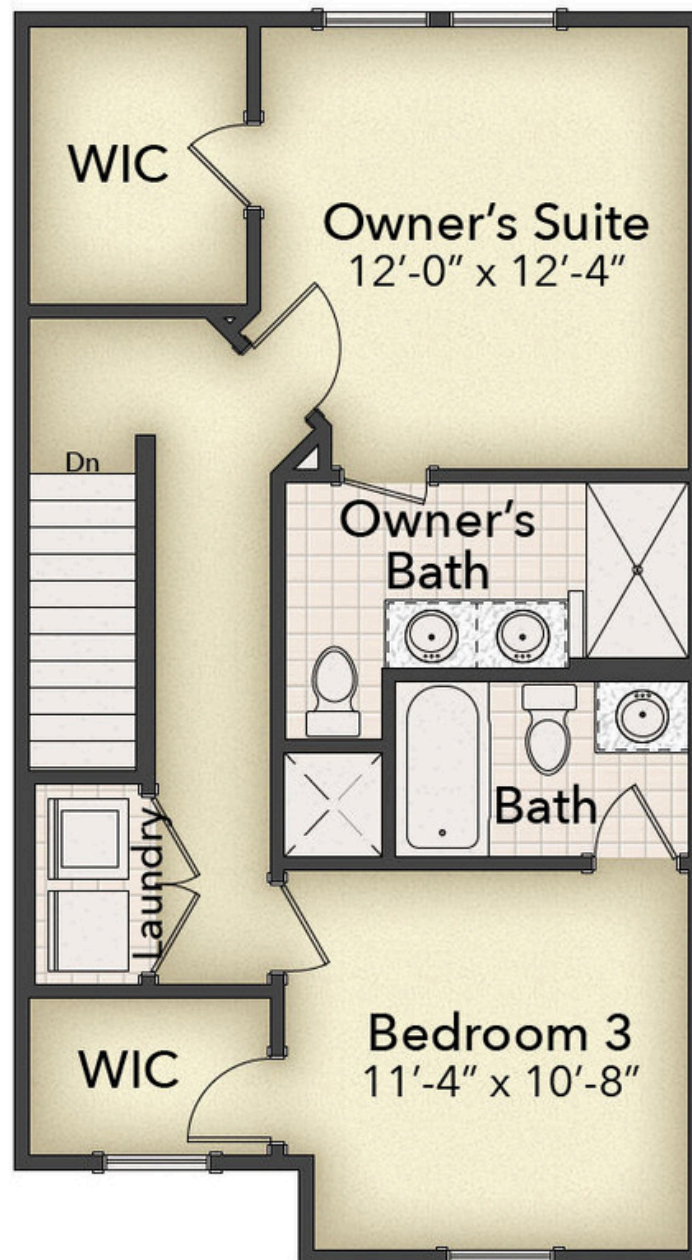


**all pricing, products, and availability are subject to change without notice.*

Cape Charles

639B 22ND STREET

THIRD FLOOR



Inspire at the ViBe

SITE LAYOUT



**Site plan is an artistic rendering, subject to artistic liberties.*

Inspire at the ViBe

STANDARD FEATURES

EXTERIOR

- Beautiful Appointed Exterior Features
- Vinyl Windows Low E Glass with grids
- 30 Year Architectural Shingles
- James Hardie Siding
- Fiberglass Entry Door
- Brick accents/ skirt on the Front/ Side Elevation (Per Plan)
- Carriage Garage Door with Glass Windows
- Designer Brand Lighting Fixture Package
- Hose Bibs – Front and Rear
- GFI Protected Outlets – Front and Rear
- Concrete Walkways
- Landscape Design Including Shrubs & Sod (Per Plan)
- Brush Finished Concrete Outdoor Living Patio
- Standing Seam Metal Roofs (Per Plan)

INTERIOR

- Interior Floor Plans Designed to Maximize Natural Light
- High Ceilings in Living Area
- Deluxe 42" (Upper) Cabinets
- Soft close Dovetail Drawers and Doors
- Granite or Quartz Kitchen Countertops
- Whirlpool Stainless-Steel Appliances
- Slide-In Gas Range and Microwave Range Hood
- Luxury Vinyl Plank in the Living Area
- Stain Resistant Carpet in all Bedrooms & Halls
- Abundant LED Recessed Lighting (Per Plan)
- Knockdown Drywall Finish
- Sherwin Williams 2-Tones Interior Paint
- Electric Fireplace
- Cat6 Outlets in All Bedrooms and Living Room
- Smurf Tubing in Living Room for Entertainment Equipment
- Smart Closet for Whole Home Wi-Fi Connectivity

OWNER'S SUITE BATH

- Ceramic Tile Floors
- All Tile Shower with Niche
- Granite or Quartz Vanity Countertops
- Quality Delta Fixtures and Matching Bath Hardware
- Elongated Toilet
- Frameless Shower Door w/ Brushed Nickle Accents

SECONDARY BATHS

- Pedestal Sink w/ Oval Mirror in Powder Room
- Granite Vanity Countertops
- LVP Flooring in Bathrooms
- Low Maintenance Fiberglass Tub/Shower Inserts
- Quality Delta Fixtures with Matching Bath Hardware
- Elongated Toilets

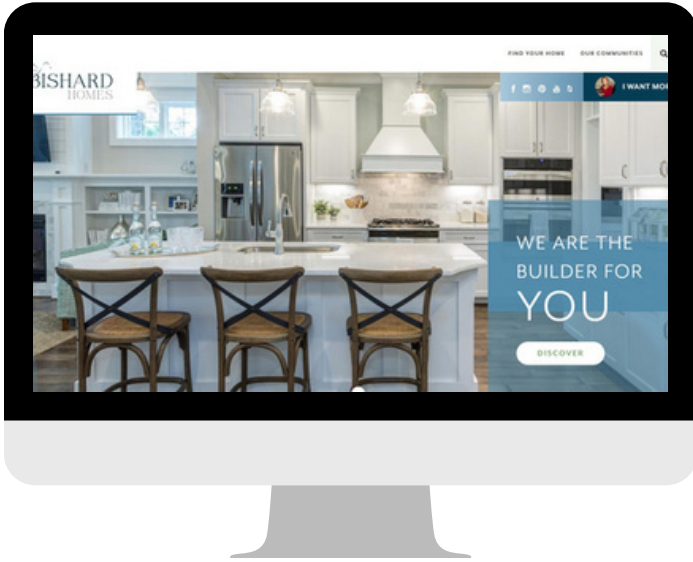
ENERGY EFFICIENCY

- LED Energy Efficient Bulbs Throughout Home
- Energy Star Appliances
- Energy Efficient Gas Furnace w/ 15 SEER A/C
- Programable Thermostat w/ Smart Phone Connectivity
- R-49 Attic Insulation, R-15 Exterior Wall Insulation
- Insulated Concrete Slab Foundation
- Spray Foam Insulation on All Penetrations
- TYPAR House Wrap System
- Energy Efficient Tankless Water Heater

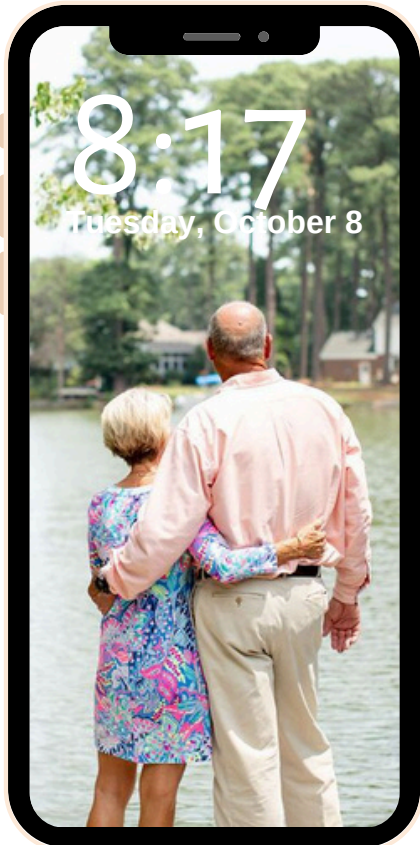
WARRANTY

- 1 Year Material & Workmanship
- 5 Year Structural Warranty

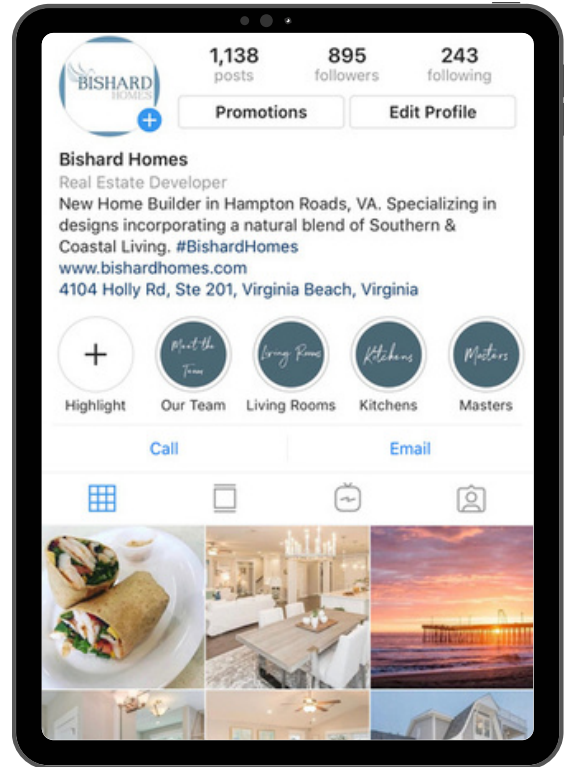
QUESTIONS?



FIND US ONLINE AT
WWW.BISHARDHOMES.COM



FOLLOW ALONG ON
SOCIAL MEDIA
@BISHARDHOMES



CALL OUR
NEW HOME SPECIALISTS
(757) 703-3367