



AVONLEY HOMES

1812 RUBICON COURT



RUBICON NEIGHBORHOOD

3 BDRM | 2 BATH | 1800 SF

Where functionality and beauty meet, The “Violet” plan is a perfect place to call home. Admire the elegant entryway that leads to the open living space and spacious L-shaped kitchen, featuring a large eat in island, large windows and built in study nook. The separate dining area allows for a comfortable space to host any guest while admiring all that this home has to offer. Fall in love with every aspect of this home and Come Home to Avonley.

FEATURES:

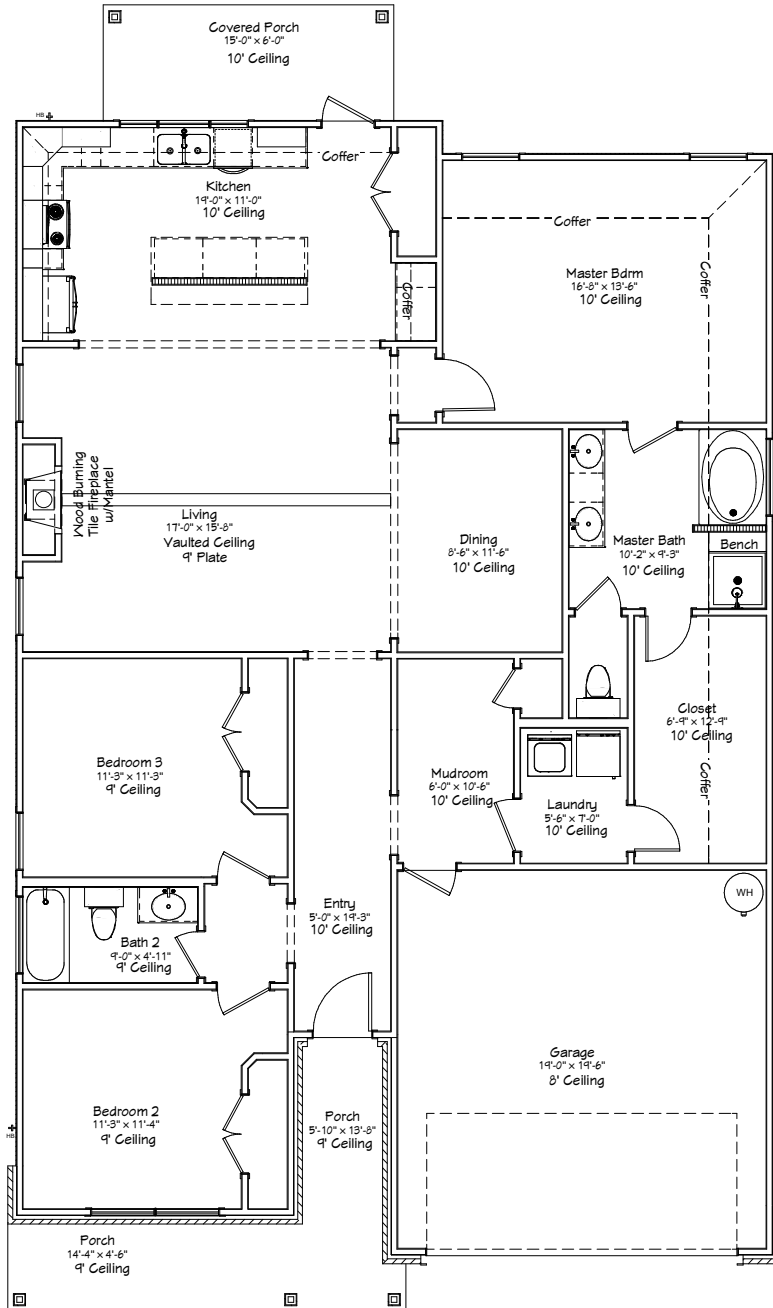
Covered Back Porch | Granite Countertops | Mudroom Cabinetry
Luxury Vinyl Plank Flooring | Stainless Appliances

COME HOME TO AVONLEY



Avonley Homes
979-321-7200
info@avonleyhomes.com

1812 RUBICON COURT



3 BDRM | 2 BATH | 1800 SF

COME HOME TO AVONLEY | Avonley Homes is committed to giving families the home of their dreams. From simple comfort to expert craftsmanship, we promise you will be proud to call our house your home.

WWW.AVONLEYHOMES.COM