

## Ethans Mill



Elevation A



Elevation B

## Ethans Mill Features

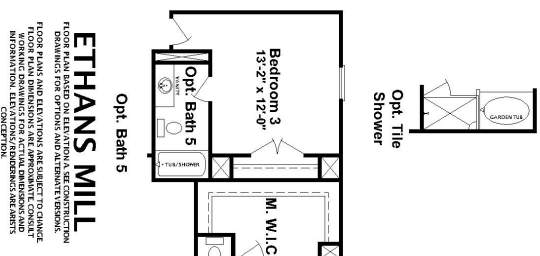
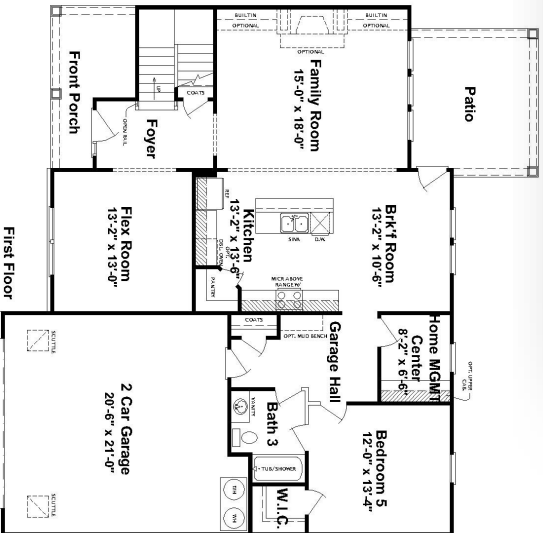
- 3019 Square Feet
- 5 Bedrooms
- 3 - 4 Baths
- Guest Bedroom Downstairs
- Home Management Center
- Master with Sitting Area



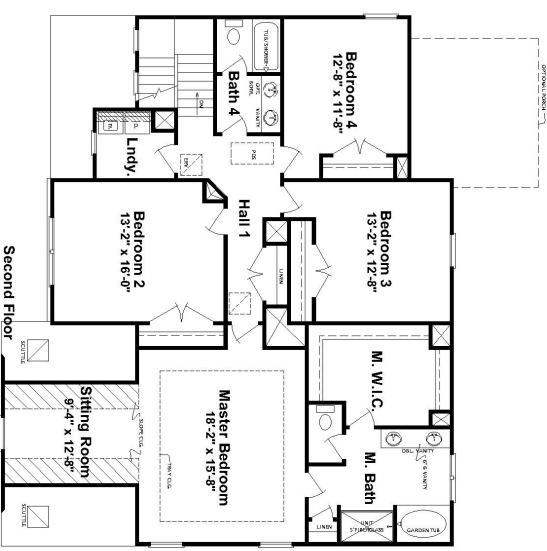


We Build a Better Home

Ethans Mill



**ETHANS MILL**  
 FLOOR PLAN BEING SHOWN IS AN ILLUSTRATION. RECOMMENDATIONS FOR OPTIONS AND ALTERNATE VERSIONS. FLOOR PLAN AND ELEVATIONS ARE SUBJECT TO CHANGE. \*WORKING DRAWINGS FOR ACTUAL BUILDING AND INFORMATION. LEAD CONSTRUCTION CONTRACTORS.



3010 Square Feet

Ivey Homes:  
 672 Industrial Park Drive, Suite 200  
 Evans, GA 30809  
 706.868.9363

"Window grid patterns may vary. Standard window grid pattern on all elevations will be 2 over 1 unless buyer chooses another available grid pattern with an additional investment."

Actual construction may vary from plan shown. Please consult working drawings to view elevation and floor plan to be built. Copyrighted 2019 by Ivey Residential, LLC