

DESIGN

ARCHER - 4433



A



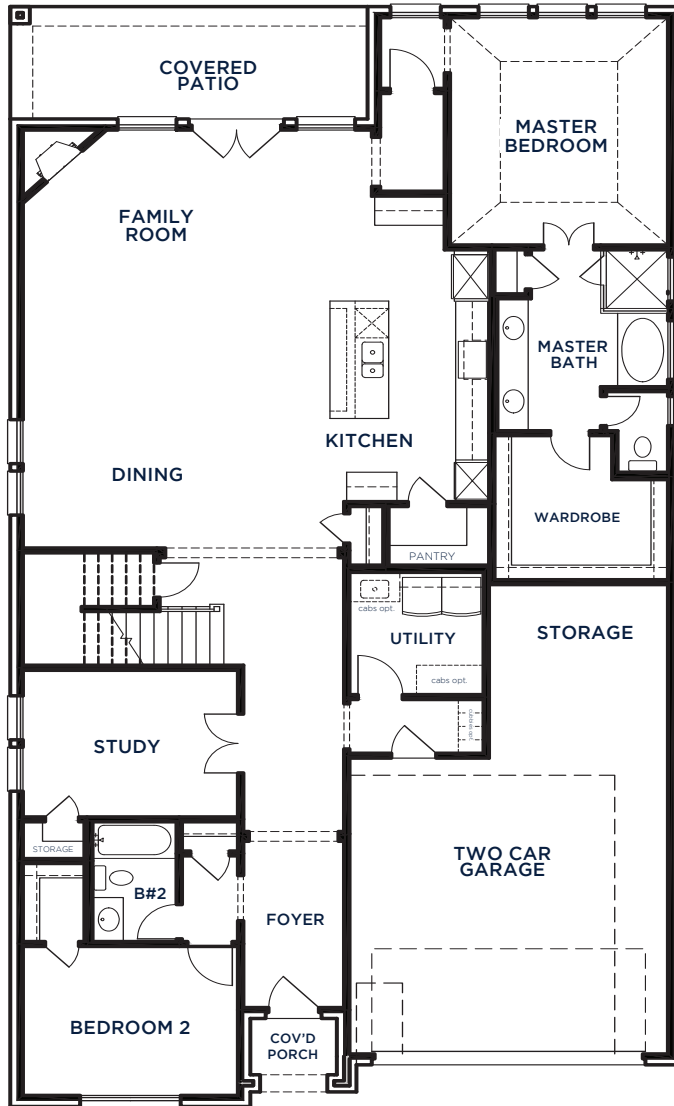
C



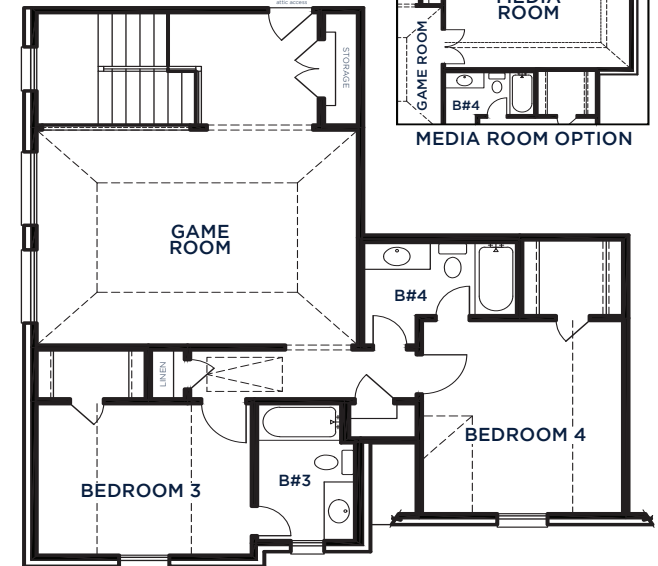
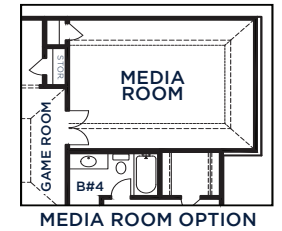
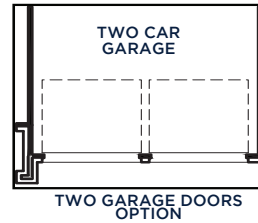
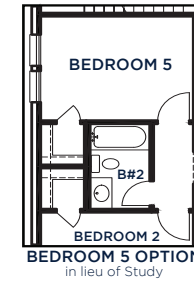
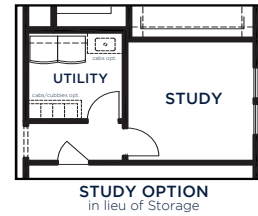
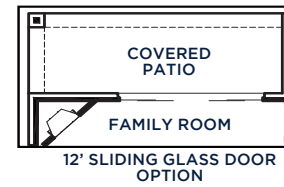
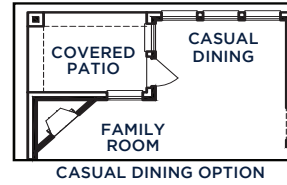
D



All Product including Architectural Designs, ©2000-2023, Shaddock Homes, LTD., All rights reserved. There may be existing or future design changes made in the floorplans, building products, methods, square footage or designs used in our homes that are not reflected in our information, sales center or in our models. The materials, designs, square footages, features, and amenities shown are based upon current development plans, which are subject to change without notice. No guarantee is made that the designs, square footages, materials, features, and amenities depicted by artist's renderings or otherwise described will be built, or if built, will be of the same type, size or nature as depicted or described. All stone elevations, metal roofs, cast stone door and window headers and solid sawn cedar posts are optional, but available via change order. Front doors will match the specification sheet or chosen door upgrade. Prices and terms subject to change without notice. **REVISION DATE: 7.24.2018**



FIRST FLOOR



SECOND FLOOR

**ARCHER
4433 (7.24.18)**

	S.FT
First Floor	2197
Second Floor	989
Total Living Area	3186
3 Car Garage	551
Covered Patio	164
Covered Porch	28
Total Area	3929

Options

Study	135
Casual Dining	87
Media Room	308

SHADDOCK HOMES