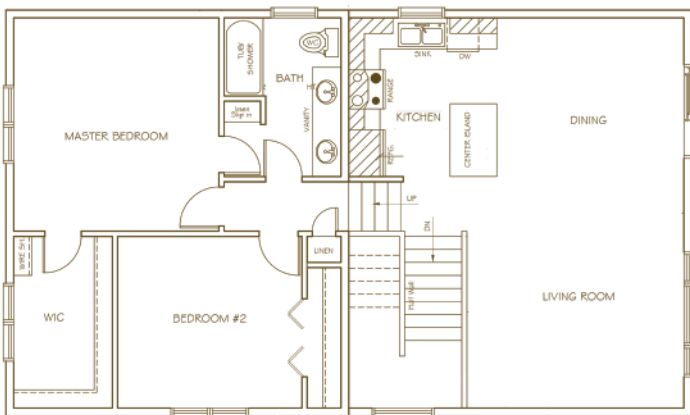


CYPRESS

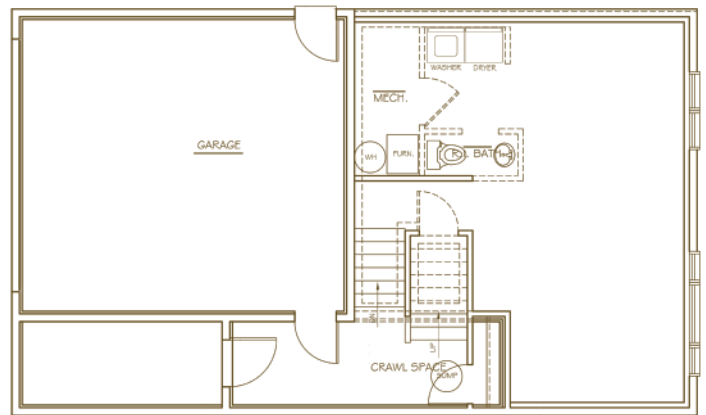


- Architectural Shingles
- Floor Truss System
- Poured Concrete Foundation
- Aluminum Soffit & Fascia
- .044 Vinyl Siding
- Vector Vinyl Glider Windows (Low E-Argon)
- Steel Service Doors
- Partial Stone/Brick Front
- 3' Concrete Apron
- Custom Knotty Alder Cabinetry
- Hollow Paneled Interior Doors
- \$25Yard Flooring Allowance (LVP Kitchen/Dining/Foyer/Bath)
- Rough in Bath/Basement
- \$3000 Appliance Allowance
- \$1000 Lighting Allowance
- 100 AMP Electrical Service
- 2 Phone or USB Jacks
- 3 Cable Jacks
- Insulated/Sheetrocked Garage
- Insulated Garage Doors
- Garage Door Opener/Main
- 95% Gas Furnace
- 2 Ton 14 Seer Central Air
- 50 Gallon Electric Water Heater
- 2 Outdoor Water Spigots
- Fiberglass Bath Bay/Shower
- White Plumbing Fixtures
- Delta Bath/Kitchen Faucets
- HRV Air to Air Exchanger
- Knockdown Ceilings
- Fiberglass Insulation (R-21 Sidewalls R-49 Attic)



MAIN LEVEL

1217 Square Feet



LOWER LEVEL



Danny Weihrauch
 REALTOR®
 RE/MAX Results
 Cell: 651-216-4788
 Email: danny.w@results.net



GRAPHIC HOMES, INC.
 MN LIC# BC032059