

# Bryce

1,600 Living Sq.Ft. | 2,047 Total Sq.Ft. | 3 Bedroom, 2 Bath



Exterior A



Exterior B



2026 SeaGate Homes, LLC. CGC1518372. This Artist Rendering is conceptual only. Actual construction and dimensions may vary and are subject to change without notice.

[SeagateHomes.com](https://SeagateHomes.com)

# Bryce Base Floor Plan



Rev. 4/29/2024

## MEASUREMENTS

### COVERED ENTRY

9'4" Ceiling

### KITCHEN

10'5"x12'3"

Vaulted Ceiling

### Café

10'9"x6'4"

Vaulted Ceiling

### GREAT ROOM

15'8"x18'5"

Vaulted Ceiling

### DINING ROOM

11'0"x10'5"

Vaulted Ceiling

### OWNER'S SUITE

12'9"x15'11"

8'0" Ceiling\*

### BEDROOM 2

10'7"x9'11"

8'0" Ceiling\*

### BEDROOM 3

11'2"x10'0"

8'0" Ceiling\*

### GARAGE

19'0"x18'9"

8'0" Ceiling

### PATIO

9'0"x6'0"

\*Optional 8'8" Recessed Ceiling

## LEGEND


## SQ. FT. SUMMATION

LIVING AREA	1,600 Sq.Ft.
GARAGE	394 Sq.Ft.
COVERED ENTRY	53 Sq.Ft.
TOTAL UNDER ROOF	2,047 Sq.Ft.





# Available Options

## MEASUREMENTS

### BEDROOM 4

11'3"x11'4"

8'0" Ceiling

\*Optional 8'8" Recessed Ceiling

### ALTERNATE KITCHEN

11'1"x14'7"

Valuted Ceiling

### COVERED LANAI

12'0"x10'0"

8'0" Ceiling

### EXTENDED LANAI

16'0"x12'0"

8'0" Ceiling

## OTHER OPTIONS (not shown)

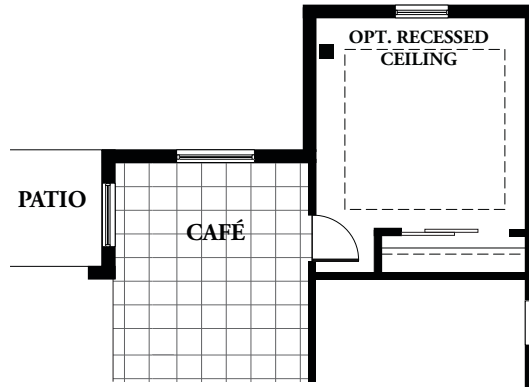
9 FT SLIDING DOOR (at Lanai)

DELETE FOYER HALF WALL

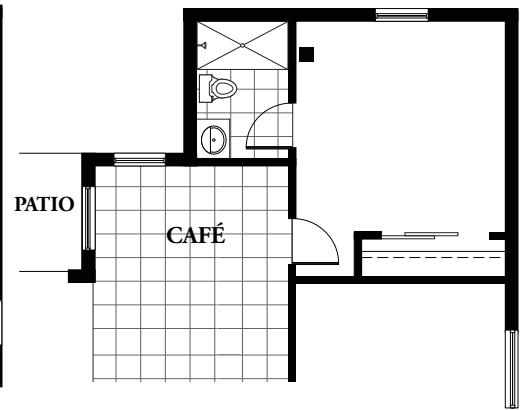
ALTERNATE W.I.C. DOOR

(OPENS IN OWNER'S SUITE)

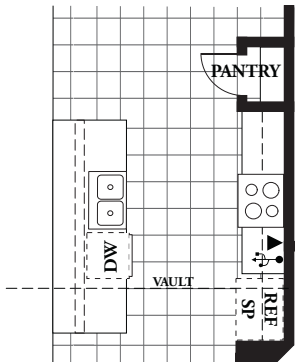
**BEDROOM 4**  
(ADDS 155 SQ. FT.)



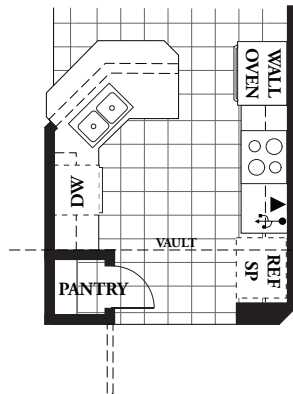
**BEDROOM 4 & BATH 3**  
(ADDS 195 SQ. FT.)



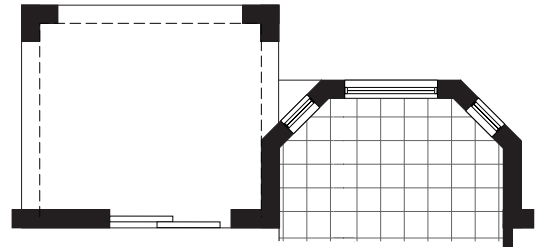
**ALTERNATE KITCHEN**



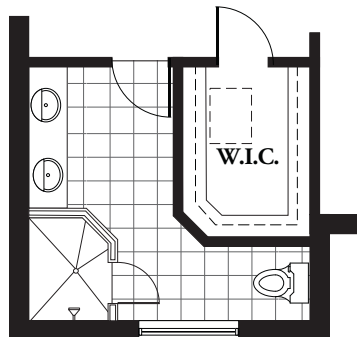
**GOURMET KITCHEN**



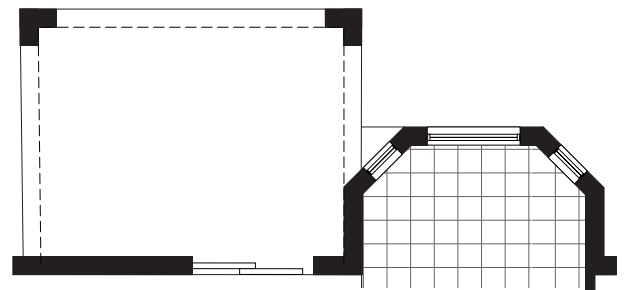
**COVERED LANAI**



**ALTERNATE OWNER'S BATH**



**EXTENDED LANAI**



## LEGEND

	Arch		Cable
	Attic Access		Phone
	Tile		USB

Rev. 12/15/2025

# Available Options

## MEASUREMENTS

### BEDROOM 4 & EXPANDED LANAI

Bedroom 4: 11'3"x11'4"

Lanai: 21'0"x14'0"

8'0" Ceiling

### BEDROOM 4, BATH 3, &

### EXPANDED LANAI

Bedroom 4: 11'3"x11'4"

Lanai: 15'3"x14'0"

8'0" Ceiling

### 3-CAR GARAGE

29'2"x18'9"

8'0" Ceiling

### 2-CAR COURTYARD GARAGE

19'0"x23'1"

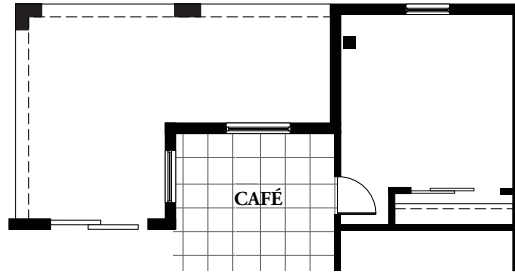
8'0" Ceiling

### 3-CAR COURTYARD GARAGE

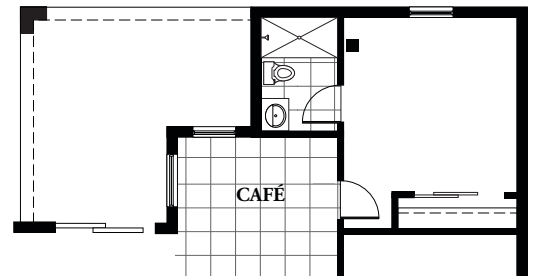
19'0"x33'1"

8'0" Ceiling

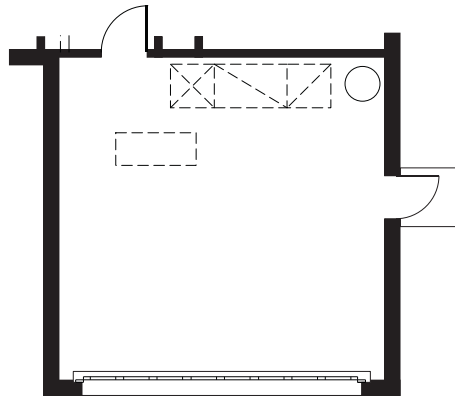
### BEDROOM 4 & EXPANDED LANAI



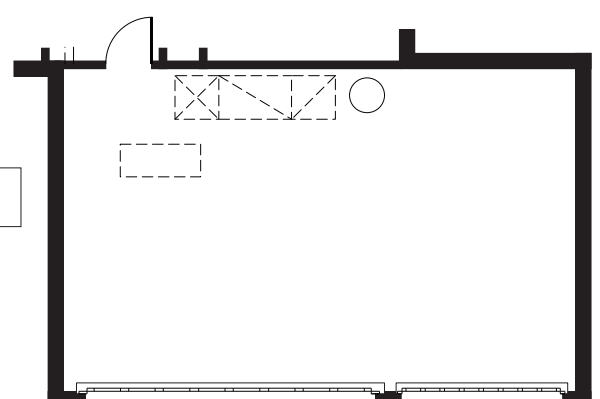
### BEDROOM 4, BATH 3, & EXPANDED LANAI



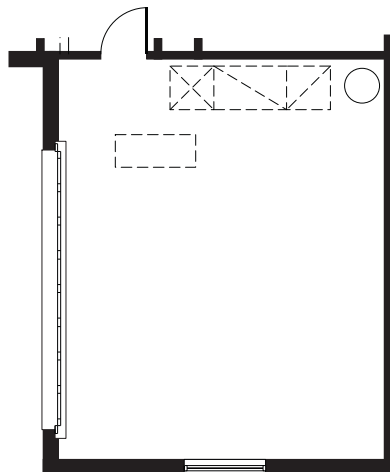
### GARAGE SERVICE DOOR



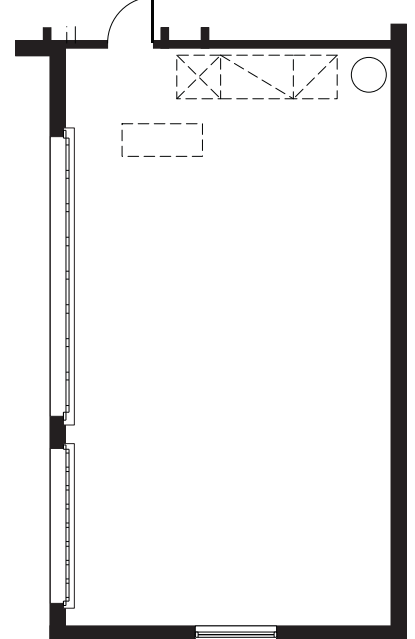
### 3-CAR GARAGE



### 2-CAR COURTYARD GARAGE



### 3-CAR COURTYARD GARAGE



## LEGEND

