

REECE HOMES

5691 MILL WATER COURT



WINDMILL HILL ESTATES NEIGHBORHOOD

4 BDRM | 3 BATH | 2660 SF

The Annie Plan offers 2,660 square feet of thoughtfully designed living space with 4 bedrooms, 3 baths, and a private study. Vaulted ceilings and an open-concept layout create a bright, inviting atmosphere perfect for gathering and entertaining. A luxurious primary suite, mudroom, and spacious 3-car garage provide the convenience and flexibility today's homeowners desire. Complete with a covered patio and outdoor fireplace, The Annie Plan is designed for comfortable living both inside and out.

FEATURES:

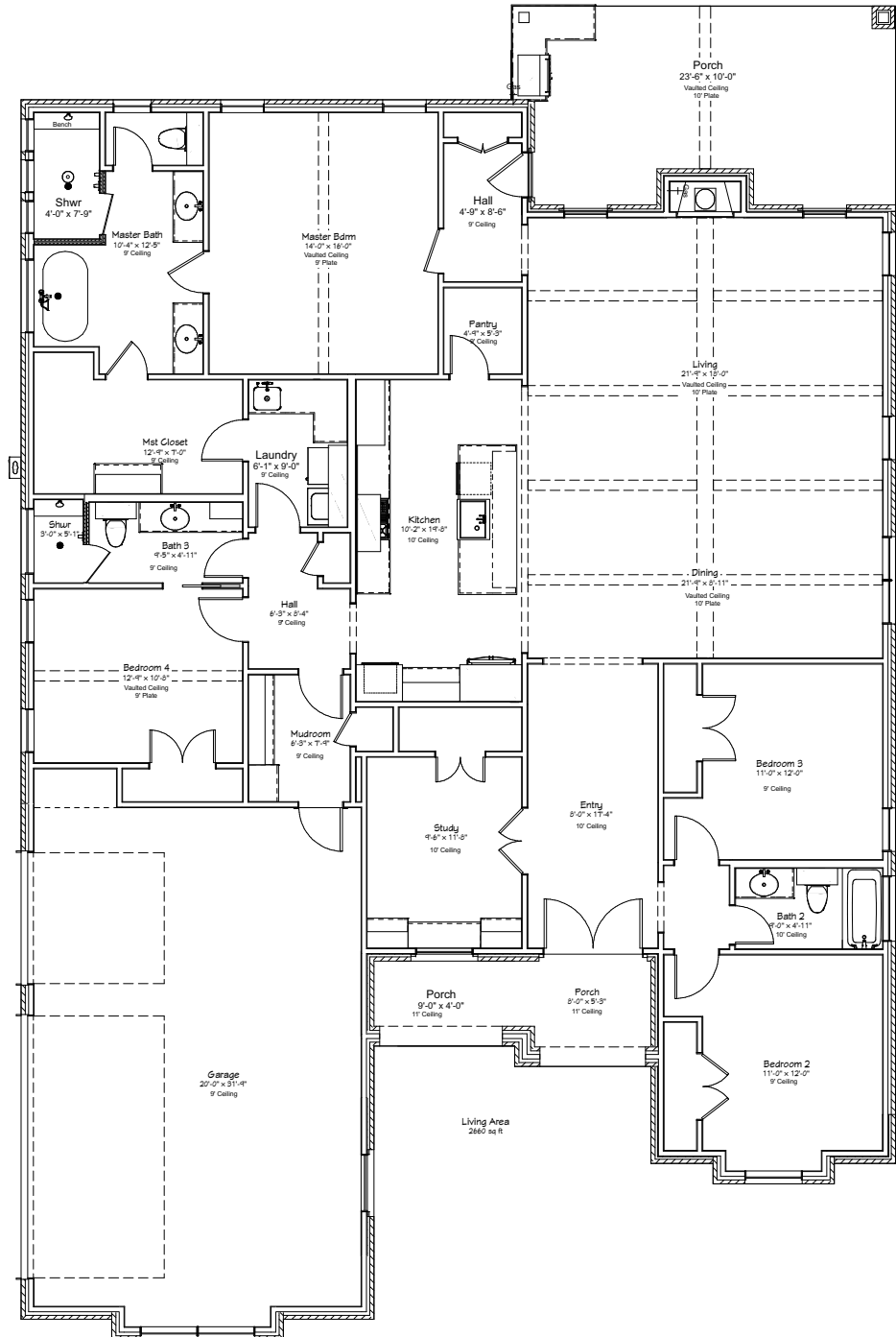
Custom Cabinetry | Quartz & Granite Countertops
Wood Tile Floor | Stainless Appliances | Custom Design Elements

Come Make Our House, Your Home.



Reece Homes
979-635-4800
info@reece-homes.com

5691 MILL WATER COURT



Built the way we live | At Reece Homes we take great care in personalizing every home to meet each family right where they are. Truly unique, the Reece Homes building experience provides in house drafting, personalized design assistance, and constant communication throughout construction.

WWW.REECE-HOMES.COM