



Welcome home! This sprawling ranch has a unique layout with room for the whole family. The expansive primary bedroom suite provides exceptional privacy, and the fourth bedroom offers flexibility for your needs. Let the memory-making begin!

## Features

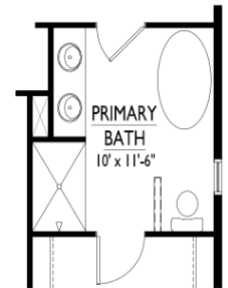
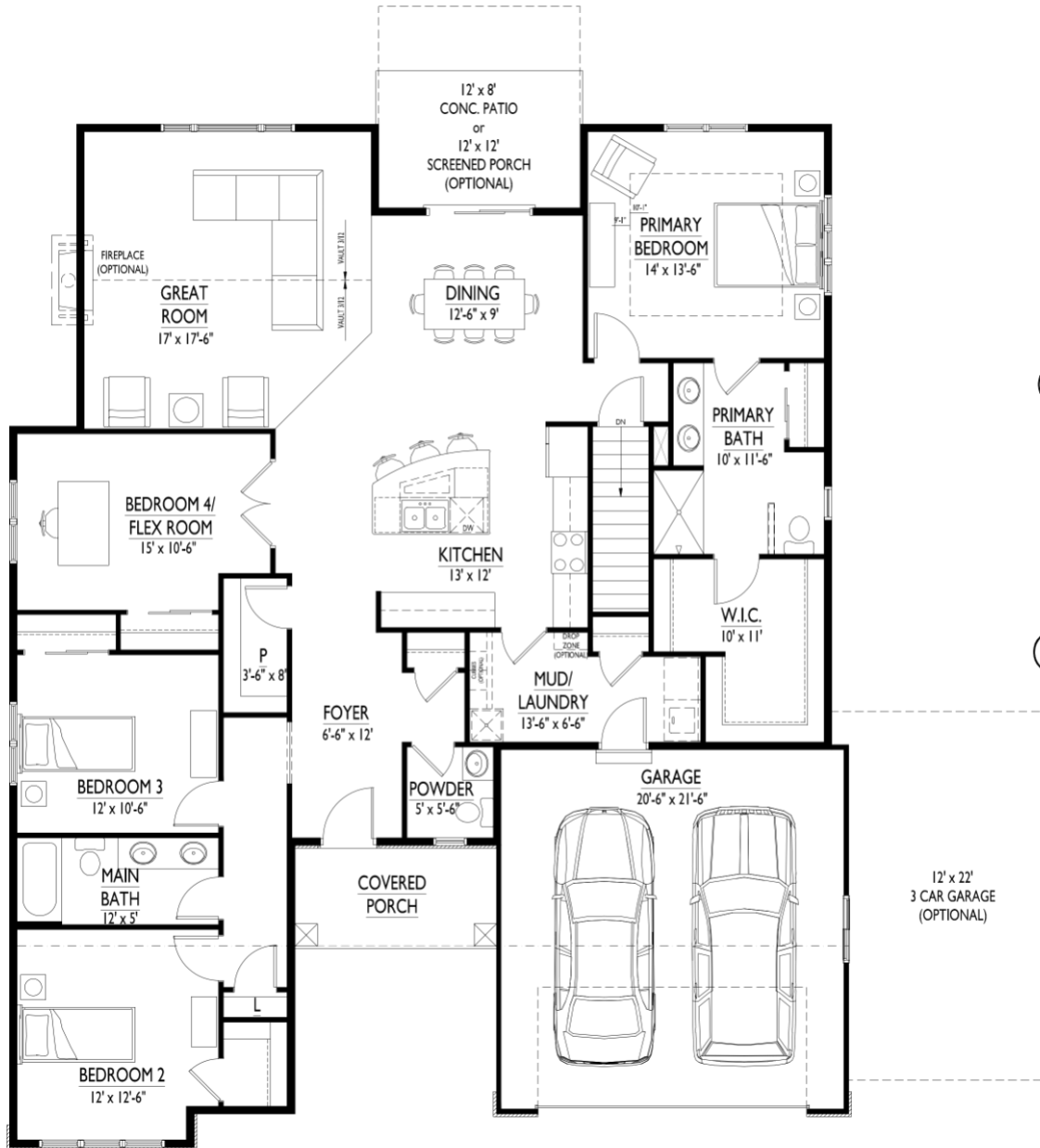
- Nine foot first floor ceiling height
- Open floor plan
- Vaulted ceiling in great room
- Laundry/mudroom off garage
- Walk-in kitchen pantry
- Primary bedroom suite features a tray ceiling, huge walk-in closet, and spacious private bath with linen closet
- Fourth bedroom/flex room for office, playroom, etc.
- Walk-in closet in bedroom 2
- Twelve foot by eight foot concrete patio

## Options

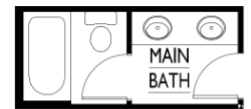
- Eight foot nine inch basement foundation walls
- Fireplace in great room
- Built-in cubbies in laundry/mudroom
- Tile shower in primary bathroom
- Alternate primary bathroom with free-standing tub, drop-in soaking tub, or whirlpool tub
- Built-in cubbies, drop zone, utility tub and/or upper cabinets in laundry/mudroom
- Alternate main bath with privacy door
- Finished deck or screened porch
- Finished lower level



1st Floor  
2,157 SF



ALT. PRIMARY BATH



ALT. MAIN BATH