

Sunset

FOX CREEK HOMES

4 Bedrooms

4.5 Baths

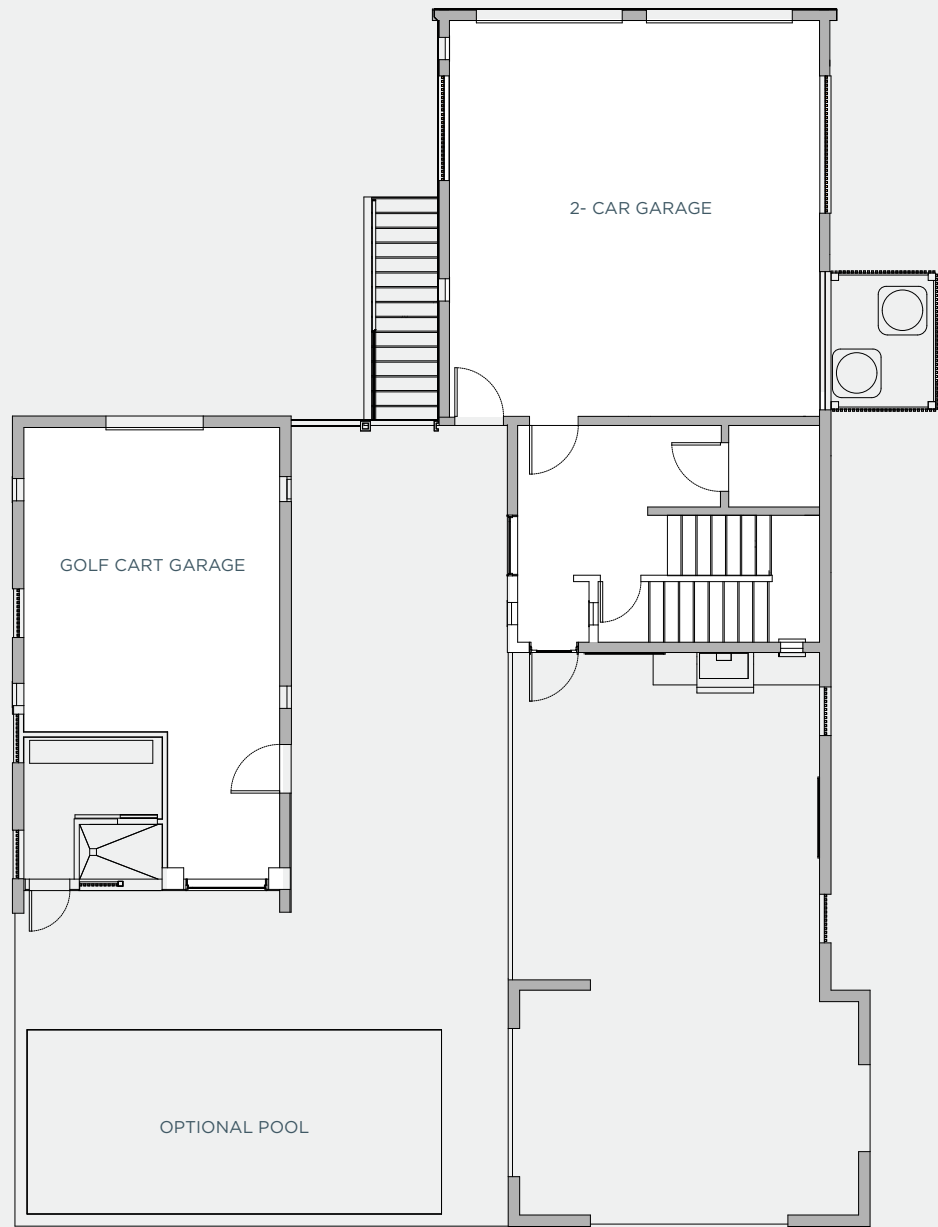
3,445 SF



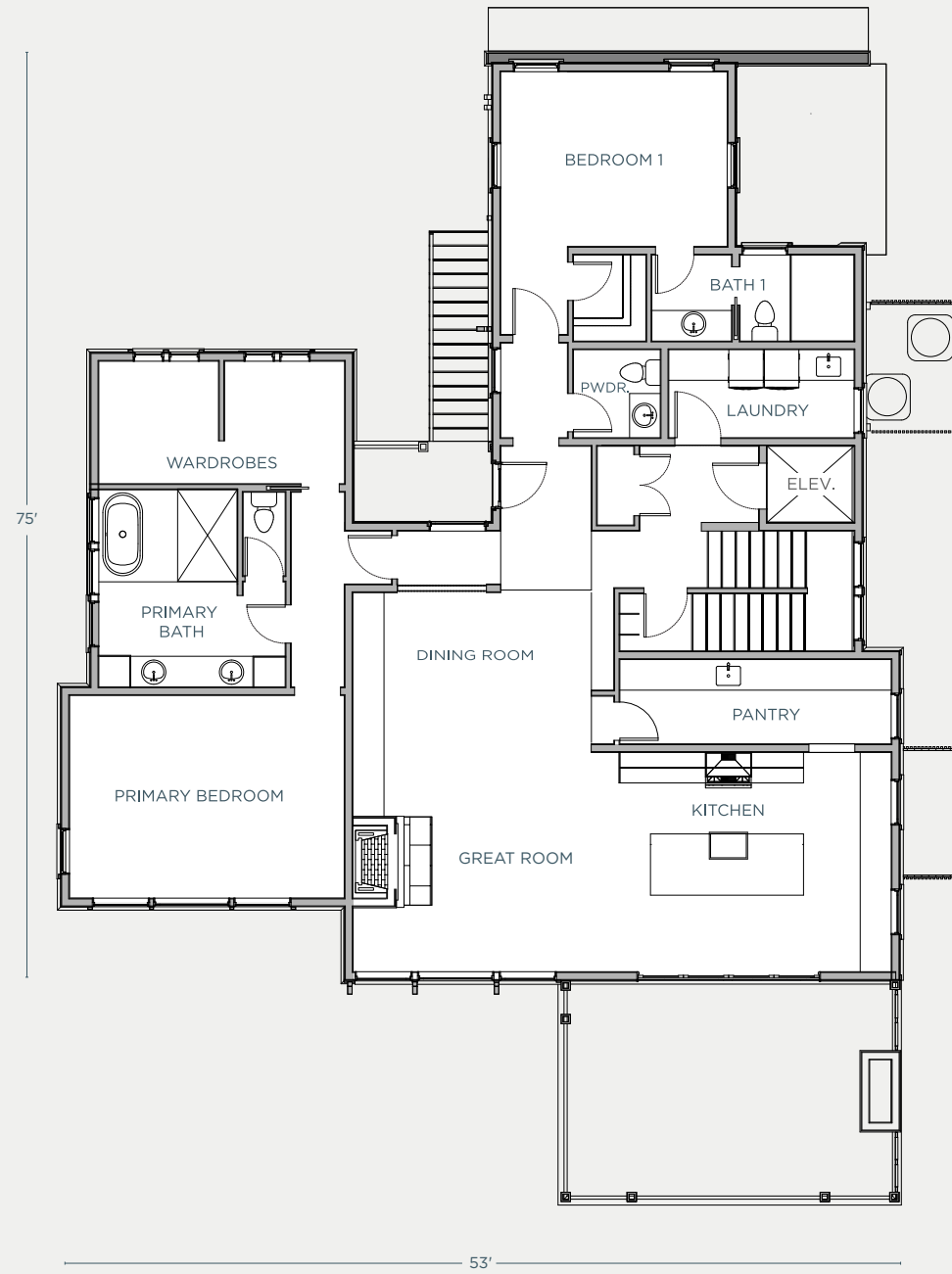
A welcoming deep front porch and generous foyer set the tone for this thoughtfully designed Kiawah River home, where light-filled breezeways and expansive windows create a seamless connection between indoor and outdoor living. The home's generous exterior spaces—including a breezeway, a covered ground-level area, and a spacious screened porch—extend everyday living outdoors and offer multiple places to relax, gather, or take in the coastal air. The main level is anchored by a gourmet kitchen featuring Calacatta marble countertops, a large central island, and an adjoining scullery—designed for both everyday living and entertaining.

A custom shiplap fireplace adds warmth and architectural interest to the living space.

The primary suite is conveniently located on the main floor, offering a private retreat with a spa-like bath, hardwood and marble floors, dual walk-in closets, and a coffee bar. Upstairs, two additional en suite bedrooms, a flexible loft, and an observation tower provide comfortable guest accommodations and elevated views of the surrounding natural landscape. With elevator access from the garage and refined finishes throughout, this home blends craftsmanship, comfort, and timeless Lowcountry design.



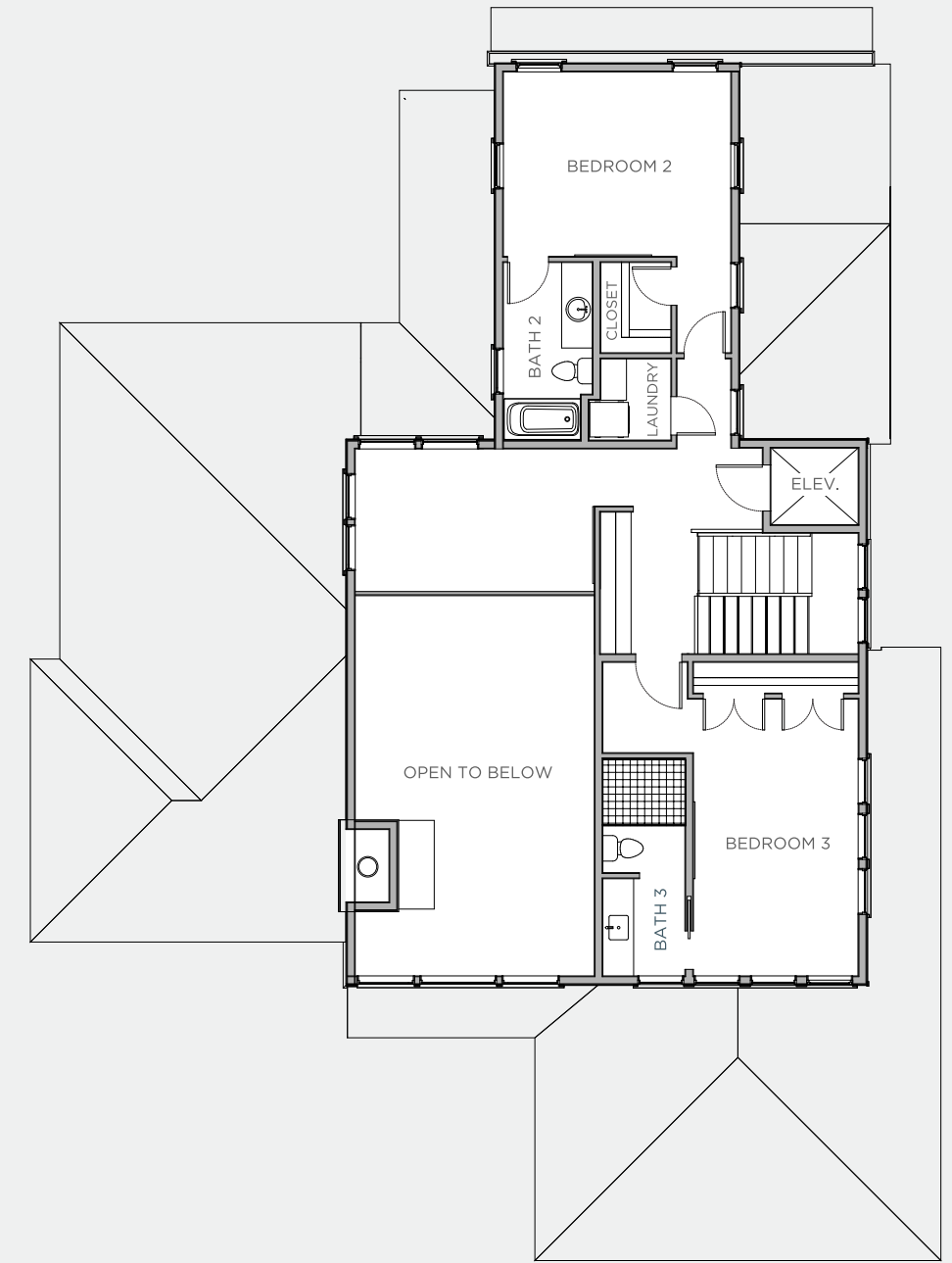
DRIVE-UNDER 2 CAR + GOLF CART BAY, AND OPTIONAL POOL



FLR
01

4 BD / 4.5 BA

2 STORIES



FLR
02

3,445 INDOOR SF

1,398 OUTDOOR SF

HOME FOOTPRINT: 75' x 53'



Smooth Sailing with Kiawah River

Consciously Curated

At Kiawah River, we believe that open-space preservation, green building principles, and responsible management practices create a community that is truly respectful of this magnificent natural setting and the natural systems that shape its landscape, and we are committed to preserving it for future generations.

Harmoniously Aligned

The Kiawah River Builders Guild is a referral roster of builders who understand the sea island aesthetic and are committed to Kiawah River's community ideals for quality, sustainability, and green building practices.

Seamlessly Steered

By selecting an approved plan from our Builders Guild, you can expect to cut your construction time by more than half, offering the quickest path to move-in day. Custom home plans are permitted but are subject to the full Architectural Review Board (ARB) approval process.

Elevated Lowcountry Living

Fox Creek Homes brings decades of custom homebuilding experience to each project, with a focus on quality craftsmanship, thoughtful design, and homes designed to sit naturally within their surroundings. Founded by Brian Gardner, the company approaches every build with care, attention to detail, and a clear commitment to doing things well. Guided by a set of core "Absolutes"—including integrity, collaboration, and respect for the environment—each home is shaped to feel enduring, intentional, and personal. A hands-on, well-organized building process emphasizes clear communication and partnership, giving homeowners confidence and peace of mind from early planning through move-in day.

K I A W A H R I V E R

CHARLESTON SEA ISLANDS



Obtain the property report required by federal law and read it before signing anything. No federal agency has judged the merits or value, if any, of this property. This material shall not constitute a valid offer in any jurisdiction where prior registration is required, but not yet fulfilled. Equal housing opportunity. The facilities and amenities described and depicted are proposed, but not yet constructed. Photographs and artists' renderings are for illustrative purposes only and are merely representative of current development plans. Development plans, amenities, facilities, dimensions, specifications, prices and features depicted or described herein are approximate and subject to change without notice.

