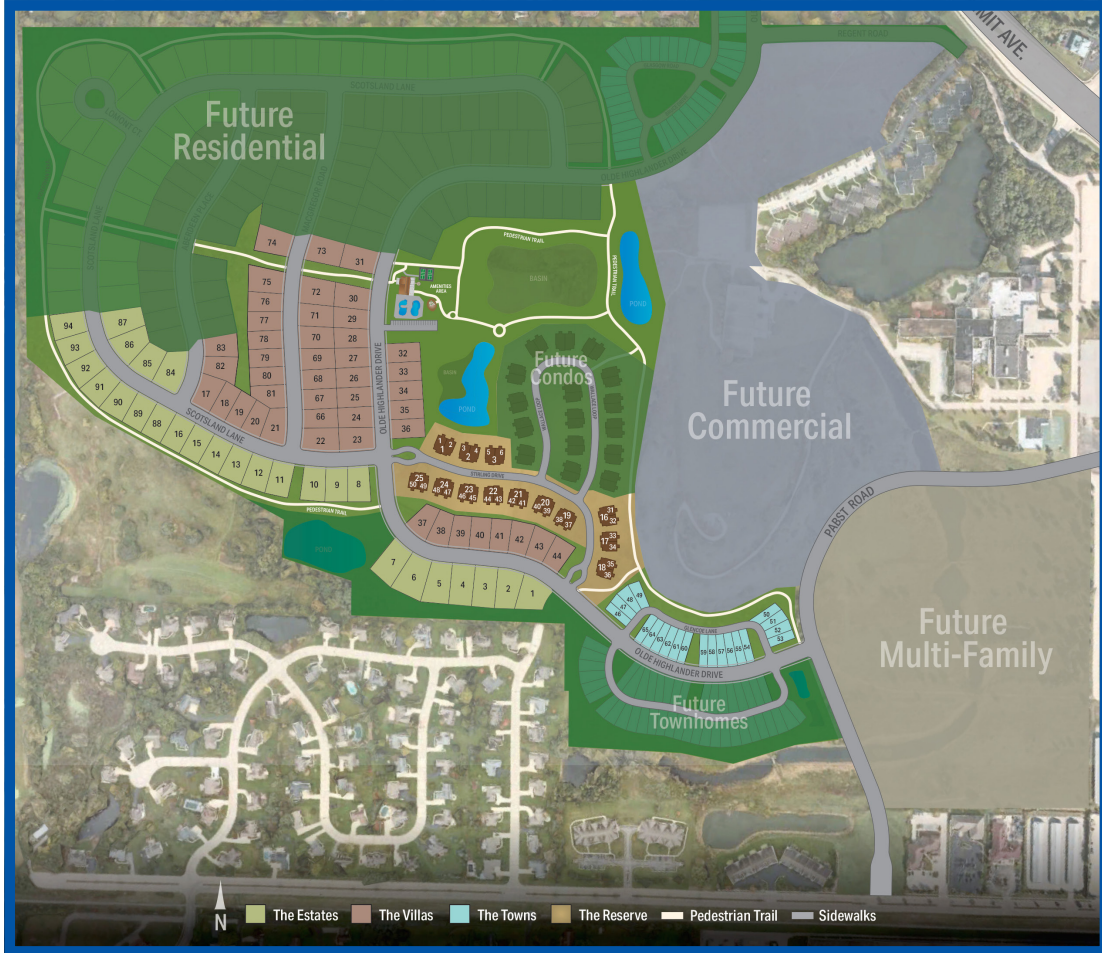


Olde Highlander



Nestled at the foot of the former Olympia ski hill, Olde Highlander stands as Waukesha County's premier master-planned community, thoughtfully crafted to offer diverse housing options and abundant amenities. Miles of paved walking trails, two pools, pickleball courts, a playground, and a large clubhouse with additional amenities make Olde Highlander a top location for anyone looking for a lively community to call home. The Villas include 120 single-family lots.

Residents of Olde Highlander can enjoy all that Oconomowoc has to offer. As one of the area's fastest-growing communities, it's the place to be for dining, shopping and entertainment. Situated along two lakes, its vibrant downtown is perfect for leisurely strolls in and out of shops and restaurants, a day at the beach, or taking in some live entertainment

- Min. Size: 1,500 Sq. Ft. One-Story
- Municipal Sewer & Water
- Min. Size: 1,750 Sq. Ft. Two-Story
- Protective Covenants
- Approx. 1/4 Acre Homesites

Directions: I-94 West. Take exit 282 for WI-67 N toward Oconomowoc. Turn right onto WI-67 N/Summit Ave. Turn left onto Oconomowoc Pkwy. Take Oconomowoc to community entrance on Pabst Road.



HARBOR
HOMES



262-232-8520 | HarborHomesWI.com



Olde Highlander

PHASE 1

Lot	Lot Size	Exposure	Price	Availability
17	12,887	None	SOLD	SOLD
18	10,092	None	SOLD	SOLD
19	9,819	None	SOLD	SOLD
20	9,902	None	SOLD	SOLD
21	12,672	4' Look-Out	SOLD	SOLD
22	14,181	None	SOLD	SOLD
23	13,002	None	SOLD	SOLD
24	11,391	None	SOLD	SOLD
25	11,008	None	SOLD	SOLD
26	10,955	None	SOLD	SOLD
27	10,862	None	SOLD	SOLD
28	10,902	None	SOLD	SOLD
29	10,988	None	SOLD	SOLD
30	12,844	None	SOLD	SOLD
31	13,352	None	SOLD	SOLD
32	10,575	4' Look-Out on Rear	SOLD	SOLD
33	10,575	4' Look-Out on Rear	SOLD	SOLD
34	10,575	4' Look-Out on Rear	SOLD	SOLD
35	10,575	4' Look-Out on Rear	SOLD	SOLD
36	10,571	4' Look-Out on Rear	Ready Home	Ready Home
37	10,617	None	SOLD	SOLD
38	10,478	None	SOLD	SOLD
39	10,094	4' Look-Out on Rear	SOLD	SOLD
40	10,489	4' Look-Out on Rear	SOLD	SOLD
41	10,348	4' Look-Out on Rear	SOLD	SOLD
42	10,930	4' Look-Out on Rear	SOLD	SOLD
43	10,698	4' Look-Out on Rear	SOLD	SOLD
44	10,467	None	SOLD	SOLD

PHASE 2

Lot	Lot Size	Exposure	Price	Availability
66	10,666	4' Look-Out on Rear	SOLD	SOLD
67	11,008	4' Look-Out on Rear	SOLD	SOLD
68	10,955	4' Look-Out on Rear	SOLD	SOLD
69	11,585	8' Full Walk-Out on Rear	SOLD	SOLD
70	12,043	8' Full Walk-Out on Rear	SOLD	SOLD
71	12,301	8' Full Walk-Out on Rear	SOLD	SOLD
72	14,570	8' Full Walk-Out on Rear	SOLD	SOLD
73	14,691	8' Full Walk-Out on Rear	SOLD	SOLD
74	14,691	None	SOLD	SOLD
75	13,741	None	SOLD	SOLD
76	10,422	None	SOLD	SOLD
77	10,307	None	SOLD	SOLD
78	10,080	None	SOLD	SOLD
79	10,080	None	SOLD	SOLD
80	10,080	None	SOLD	SOLD
81	10,849	4' Look-Out on Left Side	SOLD	SOLD
82	11,866	None	SOLD	SOLD
83	11,133	None	SOLD	SOLD



HARBOR
HOMES

Development features and amenities subject to change without notice or obligation. Information is deemed to be accurate as of 07/22/25 and is subject to change without notice or obligation.



262-232-8520 | HarborHomesWI.com

