

The Amelia

Arts & Crafts 'A'



Options Shown: Shutters, Shed Dormer, Stone Front Steps & Porch with
1/2 Stone Columns, Stone Veneer Foundation Under Windows

Craftsman 'A'



Traditional 'A'

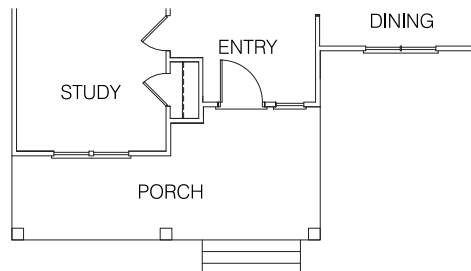
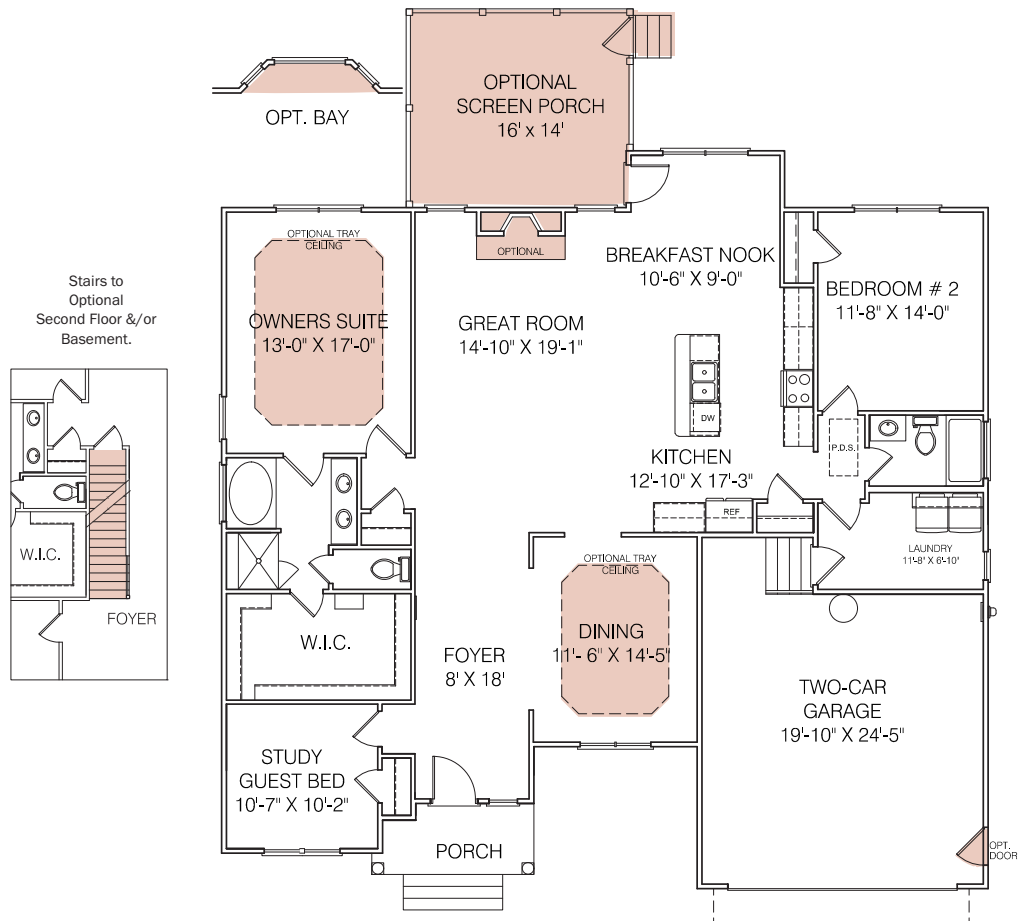
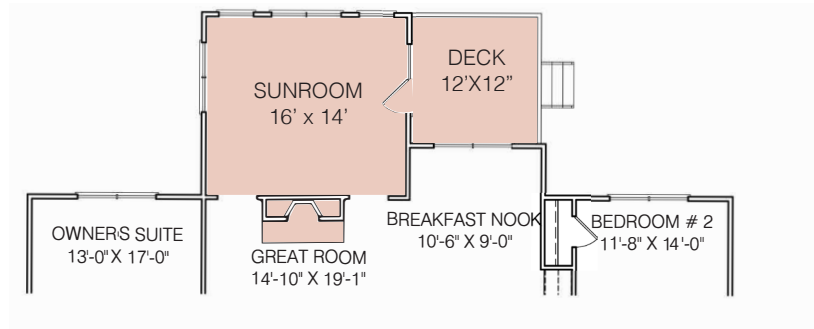


Garage door location per neighborhood

Other elevations may be available. Please ask a New Home Consultant for details.

Design your own elevation or floorplan using our **Interactive Floorplans** by visiting GoMSH.com/plans.

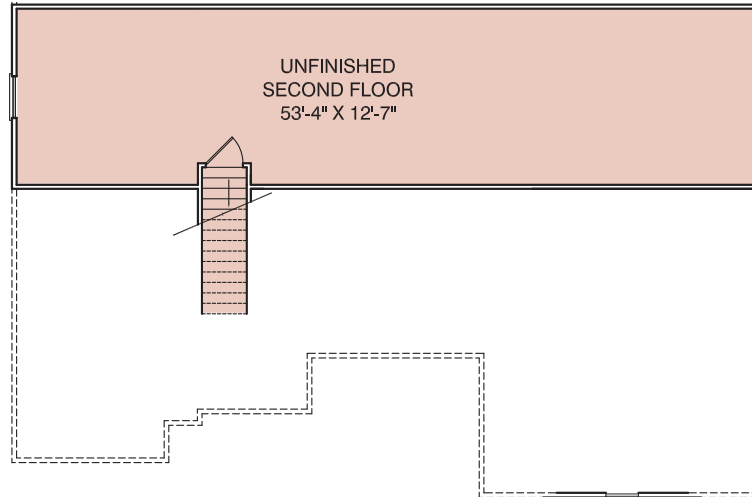
The Amelia 1st Floor Plan



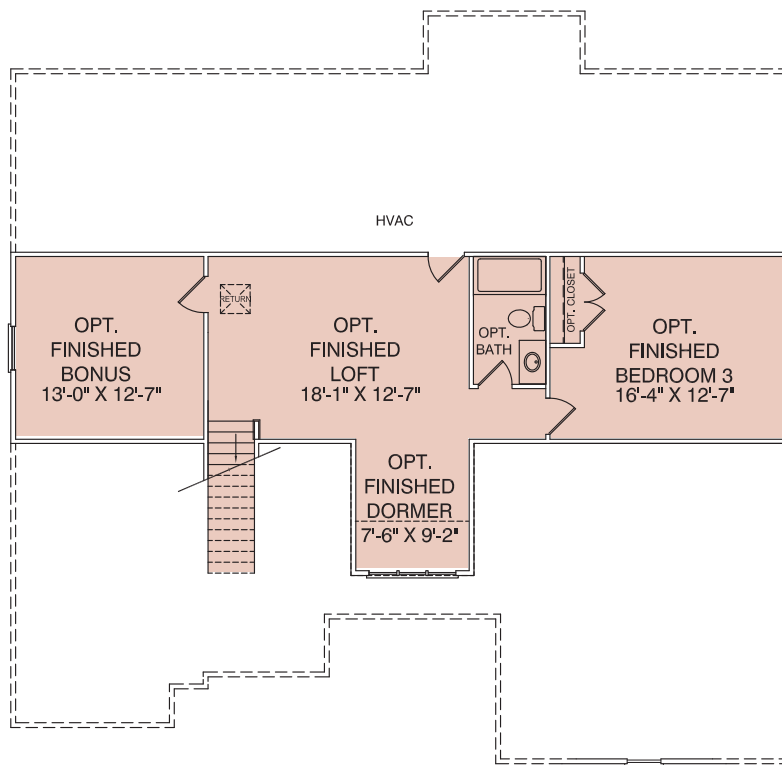
Standard Front Porch with Arts and Crafts Elevation

The Amelia 2nd Floor Plan

Opt. Unfinished Second Floor, No HVAC.

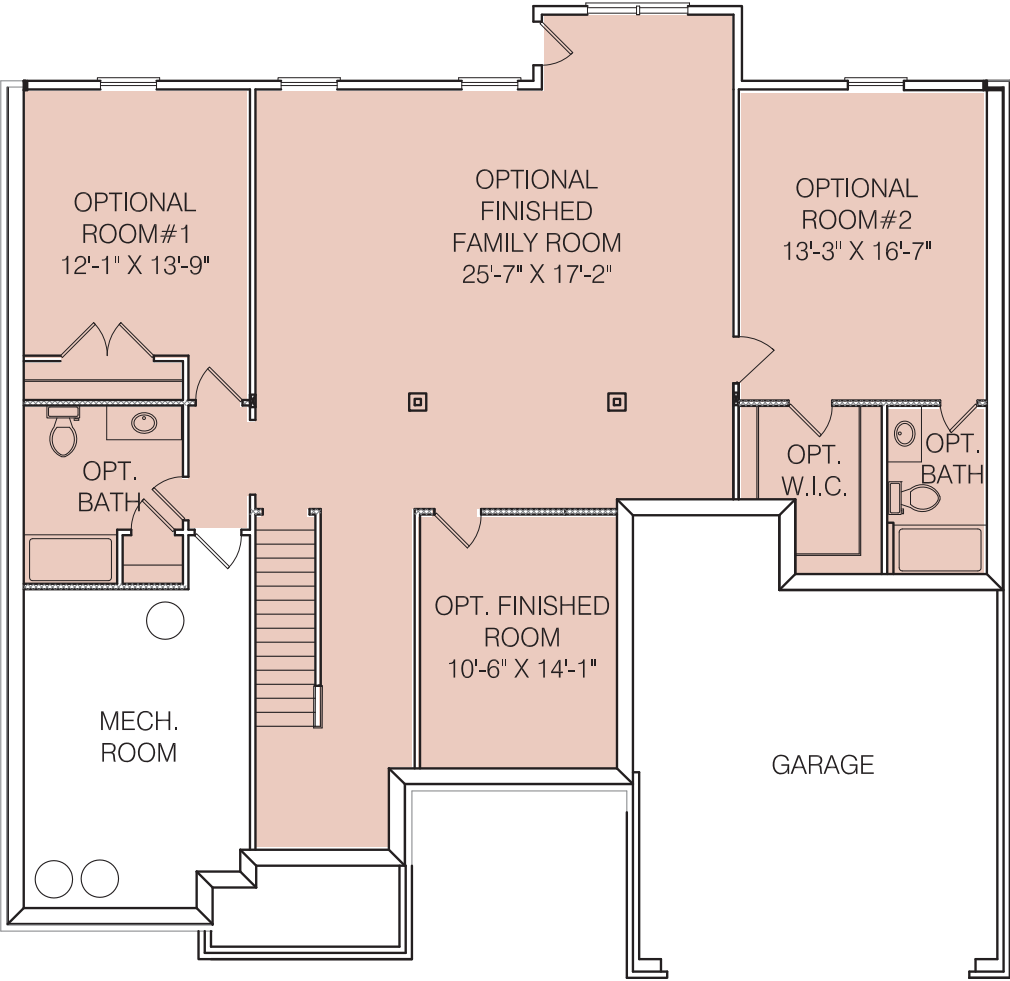


Opt. Finished Second Floor with Loft, Dormer, Bathroom, Bedroom & Bonus Room options.



The Amelia Basement

Window & door locations in a basement are subject to change per lot conditions.



Square Footage	
First Floor	1,979
Total	1,979
Garage	477
Opt. Second Floor	745-843
Opt. Basement	1,813
Footprint	54' x 52'

Although all illustrations and specifications are believed correct at the time of publication, the right is reserved to make changes, without notice or obligation. Windows, doors, ceilings, and room sizes may vary depending on the option and elevation selected. Optional items indicated are available at additional cost. This brochure is for illustrative purposes only and not part of a legal contract. It is recommended that the architectural blueprints be reviewed for further clarification of features. Not all features are shown. Please ask our New Home Consultant for complete information.

We are pledged to the letter and the spirit of the United States Policy for the achievement of equal housing opportunity throughout the Nation. We encourage and support an affirmative advertising and marketing program in which there are no barriers to obtaining housing because of race, color, religion, sex, handicap, familial status or national origin.