

Ivory



1,707 sq ft



4 bed



2 bath



a

craftsman



b

mountain cottage



d

traditional



e

modern



f

modern

FEATURES YOU'LL LOVE ABOUT THIS HOME

perfect for entertaining both indoors with an open layout and outdoors with a covered patio

great for families with four bedrooms and a split secondary bath

considerable storage with linen closets in both baths, a master walk-in closet and a large pantry



IDEAL
homes | neighborhoods®



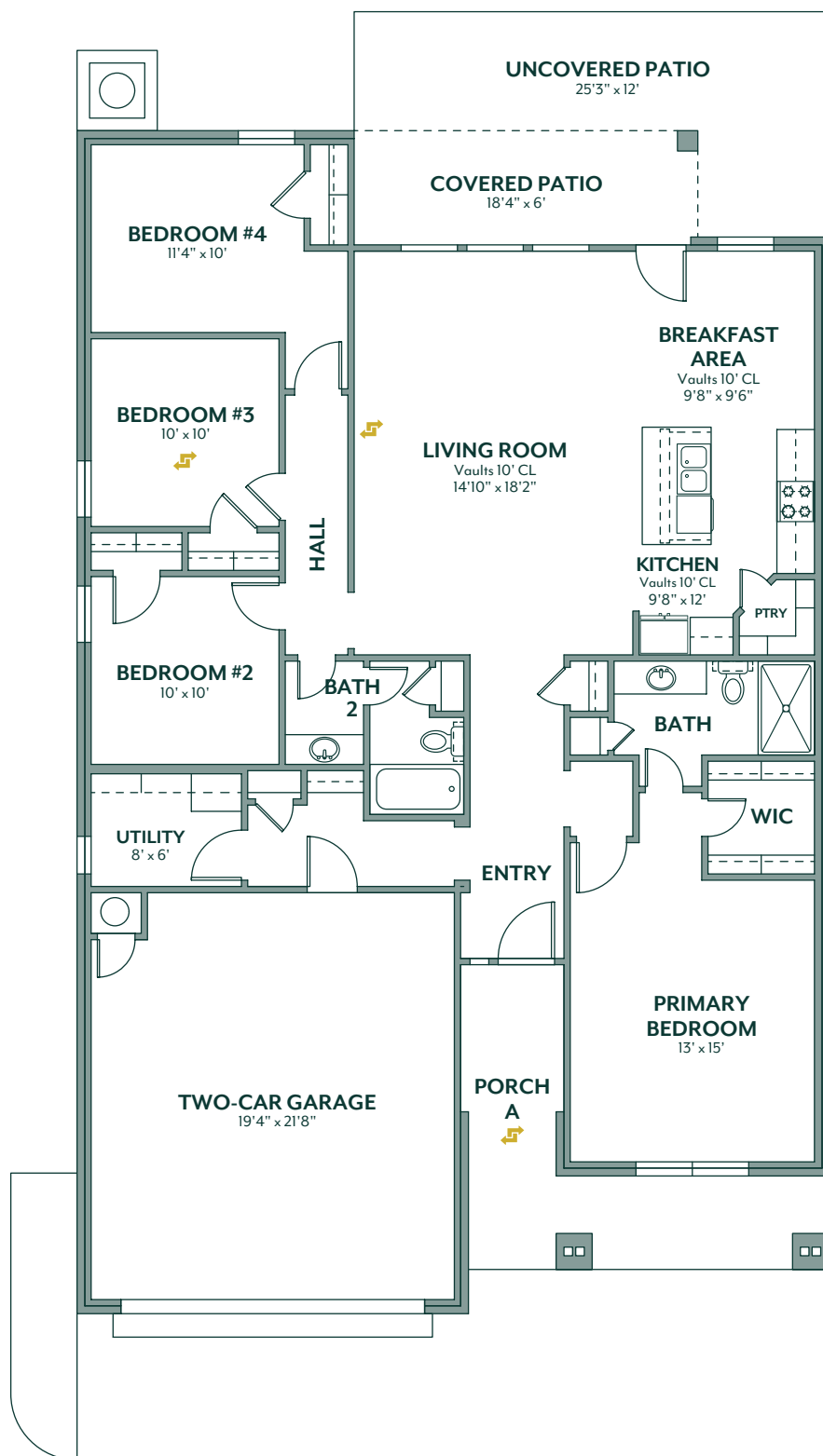
HERE'S HOW WE DEVELOP EVERY IDEAL FLOOR PLAN:

We consider everything ...

- sight lines & traffic flow
- furniture placement
- usable space
- architectural details
- window placement & size for optimal lighting
- function & low maintenance needs

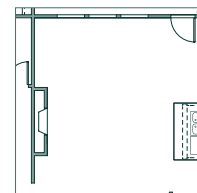
405.364.1152

www.idealhomes.com

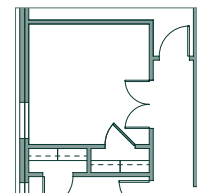


Scan the code to view a **photo gallery & included features**
for the Ivory floor plan

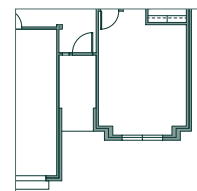
✓ customize this plan



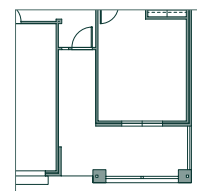
fireplace



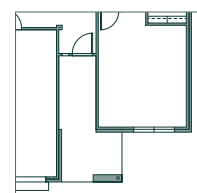
study



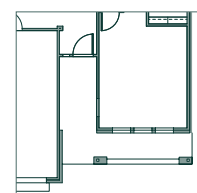
porch b



porch d



porch e



porch f