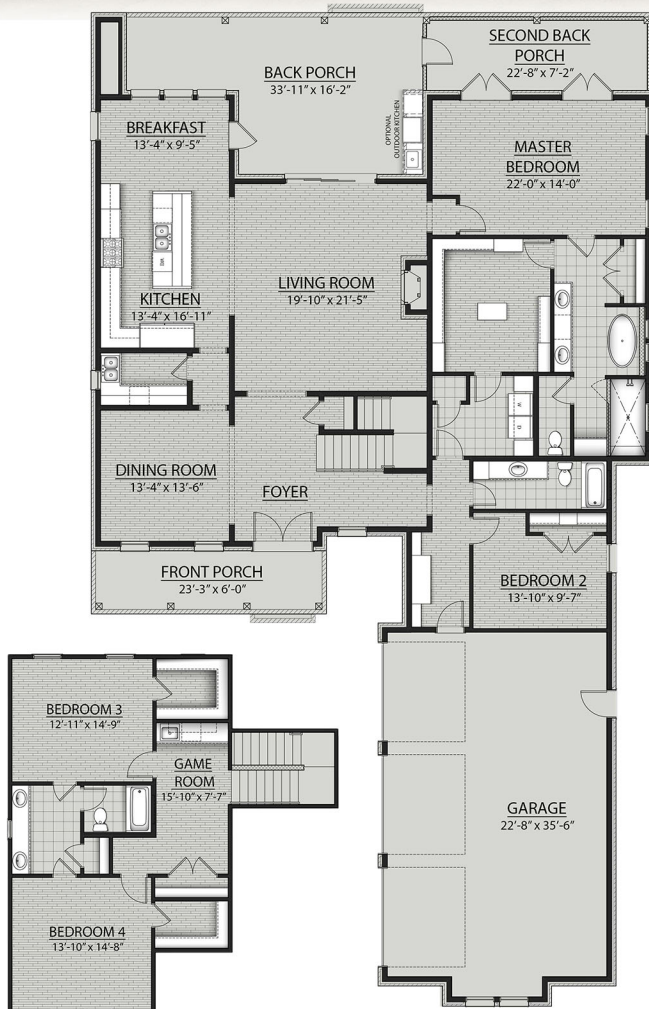


# THE WHITMAN B II PLAN



## Living Area

3536 Square Feet

## Total Area

5240 Square Feet

## Features

- Brick and Siding Exterior
- Two Story
- Three Car Garage
- Included Game Room
- Included Screened in Second Porch
- 4 Bedrooms, 3 Full Bathrooms
- Ventless Gas Fireplace in Living Room
- Optional Outdoor Kitchen
- Walk-In Closets in Upstairs Bedrooms
- Large Walk-In Master Closet
- Double Master Vanity
- Free Standing Tub in Master
- Seperate Master Shower



Floor plans and elevations are subject to change without notice. Elevations and renderings are artistic conceptions and may not accurately depict home styles. Characteristics, including but not limited to windows, doors, plan configurations and orientations are subject to change per home site. Information contained in this flyer is subject to errors, omissions, changes, withdrawals and prior sales without notice.