

SUMTER TOWNHOMES Homesites 246-251

Regent
HOMES
Marketed By Regent Realty

BURKITT RIDGE



Sumter 22'
Lot 246

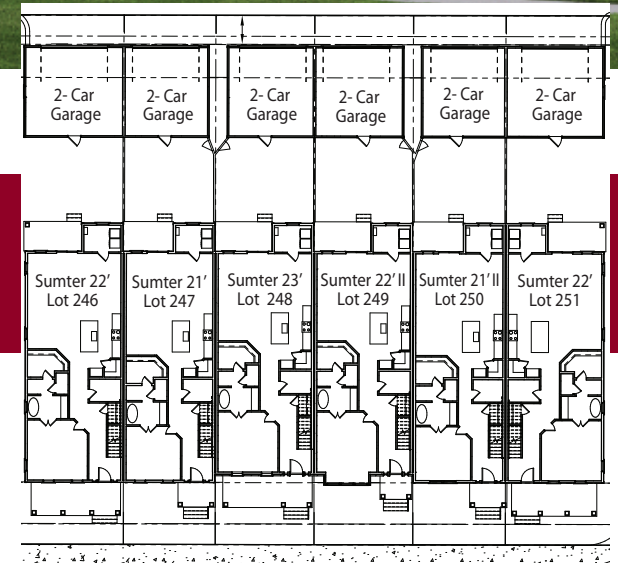
Sumter 21'
Lot 247

Sumter 23'
Homesite 248

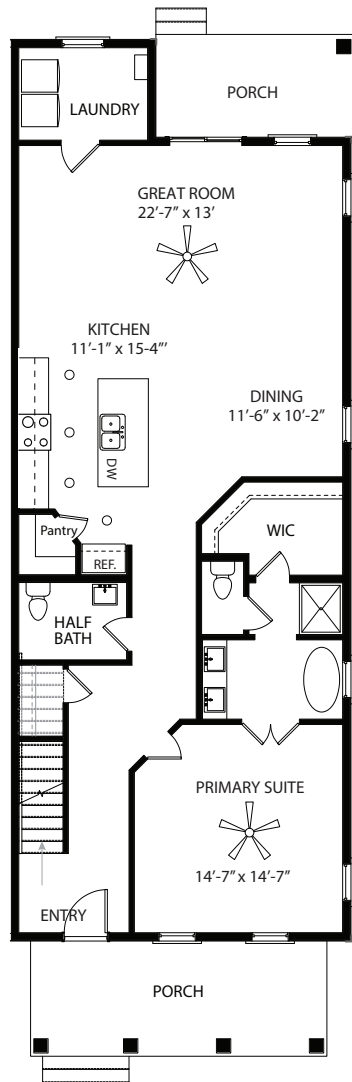
Sumter 22' II
Lot 249

Sumter 21' II
Lot 250

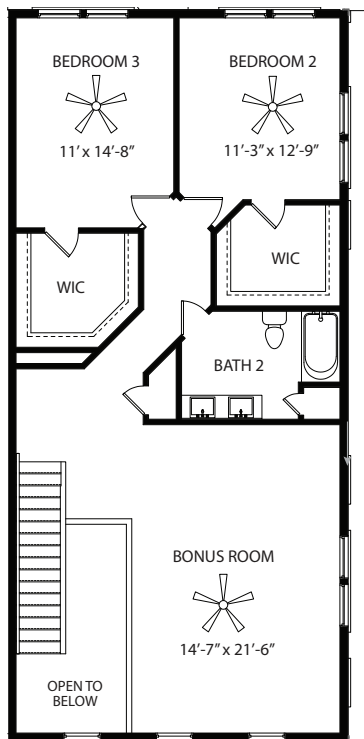
Sumter 22'
Lot 251



SUMTER 22' TOWNHOMES



First Level



Second Level



Homesite 246

Floor Plans mirrored
on homesite.

Homesite 251

BURKITT RIDGE

3 Bedrooms, 2.5 Baths, Bonus Room, and a 2-Car Garage (not shown)

Approximately 2,428 and 2,464 Living Sq. Ft.

HOMESITE 251: APPROX. AREA

FIRST LEVEL	1,396
SECOND LEVEL	1,068
TOTAL LIVING	2,464
GARAGE	517

HOMESITE 246 : APPROX. AREA

Floor Plans not shown

FIRST LEVEL	1,376
SECOND LEVEL	1,052
TOTAL LIVING	2,428
GARAGE	526

Regent
HOMES

Marketed By Regent Realty
RegentHomesTN.com

In the interest of continuous improvement, Regent Homes reserves the right to make modifications in exterior designs, architectural details, materials and specifications at any time without prior notice. All features, designs, and prices are subject to change without prior notice. Room dimensions and square footage are approximate and floor plans vary per selected builder homesite. The location of the air conditioning unit may vary. The above illustration is for demonstration purposes only. ©2025 Regent Homes LLC.

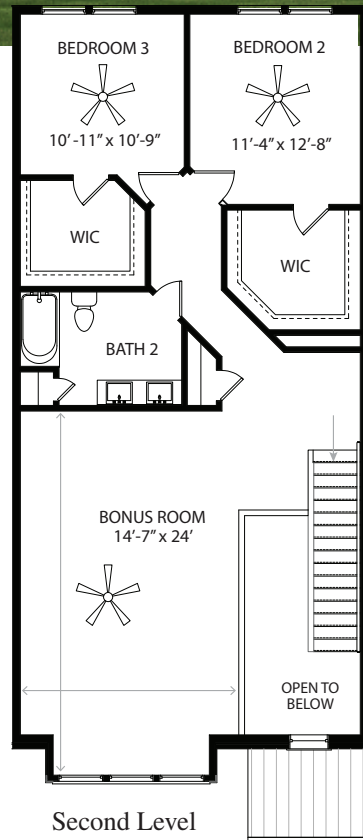
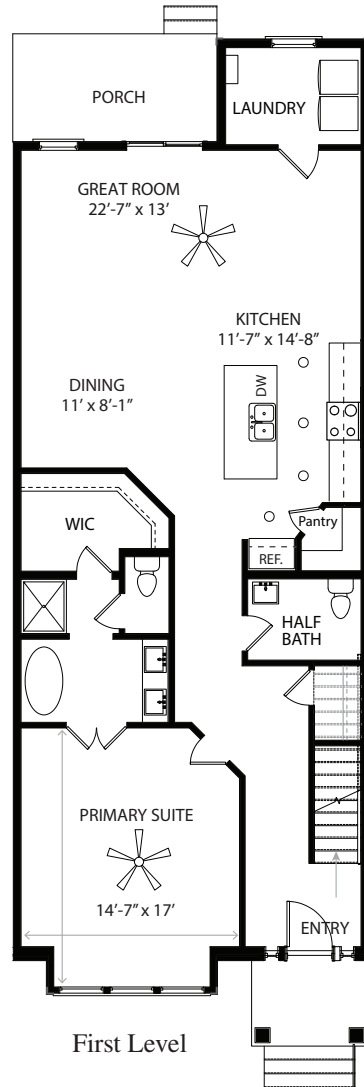
All homes built by Regent Homes are built in planned communities that contain deed restrictions, use restrictions and maintenance fees. Please consult your sales representative to obtain an official copy of the deed restrictions.



SUMTER 22' II TOWNHOME



Homesite 249



BURKITT RIDGE

3 Bedrooms, 2.5 Baths, Bonus Room, and a 2-Car Garage (not shown)

Approximately 2,387 Living Sq. Ft.

APPROX. AREA

FIRST LEVEL	1,355
SECOND LEVEL	1,032
TOTAL LIVING	2,387
GARAGE	472

In the interest of continuous improvement, Regent Homes reserves the right to make modifications in exterior designs, architectural details, materials and specifications at any time without prior notice. All features, designs, and prices are subject to change without prior notice. Room dimensions and square footage are approximate and floor plans vary per selected builder homesite. The location of the air conditioning unit may vary. The above illustration is for demonstration purposes only. ©2025 Regent Homes LLC.

All homes built by Regent Homes are built in planned communities that contain deed restrictions, use restrictions and maintenance fees. Please consult your sales representative to obtain an official copy of the deed restrictions.



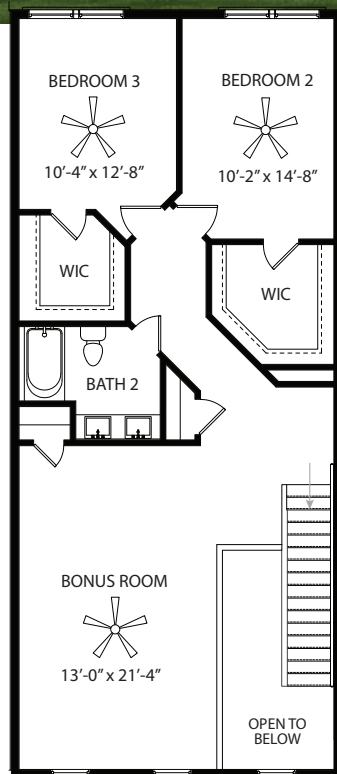
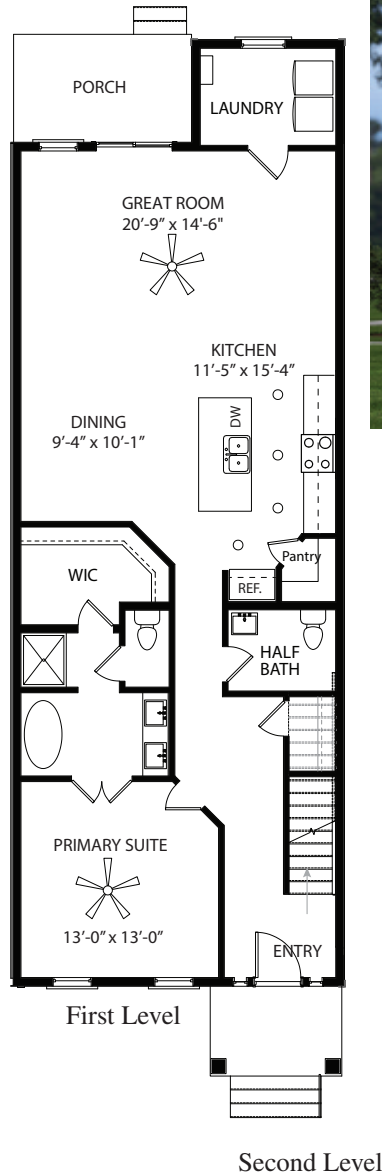
Regent HOMES Marketed By Regent Realty
RegentHomesTN.com



SUMTER 21' TOWNHOME



Homesite 247



BURKITT RIDGE

3 Bedrooms, 2.5 Baths, Bonus Room, and a 2-Car Garage (not shown)

Approximately 2,242 Living Sq. Ft.

APPROX. AREA	
FIRST LEVEL	1,282
SECOND LEVEL	960
TOTAL LIVING	2,242
GARAGE	451

In the interest of continuous improvement, Regent Homes reserves the right to make modifications in exterior designs, architectural details, materials and specifications at any time without prior notice. All features, designs, and prices are subject to change without prior notice. Room dimensions and square footage are approximate and floor plans vary per selected builder homesite. The location of the air conditioning unit may vary. The above illustration is for demonstration purposes only. ©2025 Regent Homes LLC.

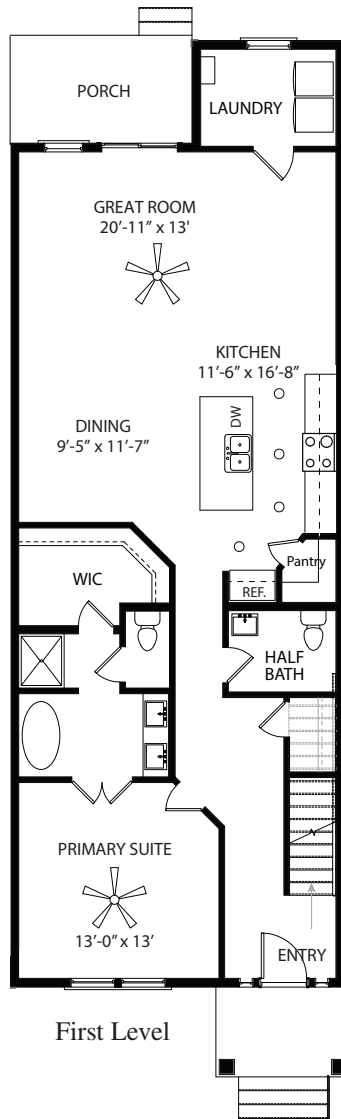
All homes built by Regent Homes are built in planned communities that contain deed restrictions, use restrictions and maintenance fees. Please consult your sales representative to obtain an official copy of the deed restrictions.



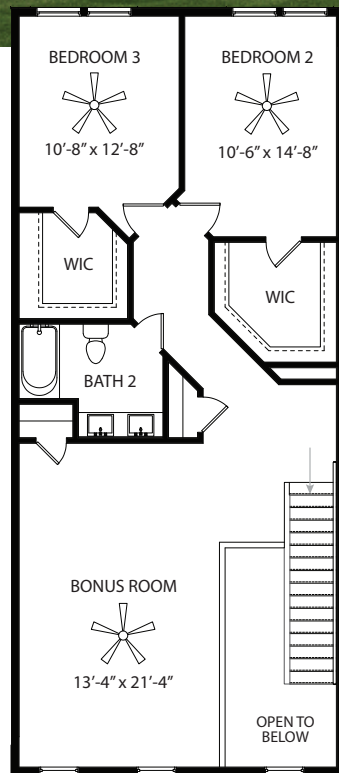
Regent HOMES Marketed By Regent Realty
RegentHomesTN.com



SUMTER 21' II TOWNHOME



First Level



Second Level



Homesite 250

BURKITT RIDGE

3 Bedrooms, 2.5 Baths, Bonus Room, and a 2-Car Garage (not shown)

Approximately 2,246 Living Sq. Ft.

APPROX. AREA	
FIRST LEVEL	1,280
SECOND LEVEL	966
TOTAL LIVING	2,246
GARAGE	472

In the interest of continuous improvement, Regent Homes reserves the right to make modifications in exterior designs, architectural details, materials and specifications at any time without prior notice. All features, designs, and prices are subject to change without prior notice. Room dimensions and square footage are approximate and floor plans vary per selected builder homesite. The location of the air conditioning unit may vary. The above illustration is for demonstration purposes only. ©2025 Regent Homes LLC.

All homes built by Regent Homes are built in planned communities that contain deed restrictions, use restrictions and maintenance fees. Please consult your sales representative to obtain an official copy of the deed restrictions.

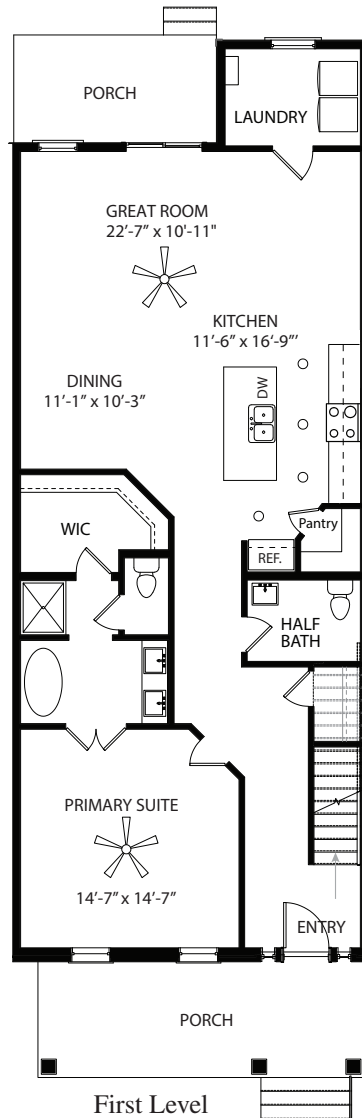


Regent
HOMES

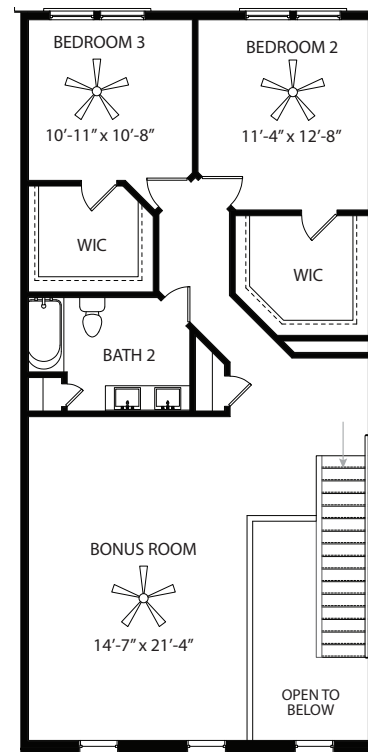
Marketed By Regent Realty
RegentHomesTN.com



SUMTER 23' TOWNHOME



First Level



Second Level



Homesite 248

BURKITT RIDGE

3 Bedrooms, 2.5 Baths, Bonus Room, and a 2-Car Garage (not shown)

Approximately 2,341 Living Sq. Ft.

APPROX. AREA

FIRST LEVEL	1,336
SECOND LEVEL	1,005
TOTAL LIVING	2,341
GARAGE	459

In the interest of continuous improvement, Regent Homes reserves the right to make modifications in exterior designs, architectural details, materials and specifications at any time without prior notice. All features, designs, and prices are subject to change without prior notice. Room dimensions and square footage are approximate and floor plans vary per selected builder homesite. The location of the air conditioning unit may vary. The above illustration is for demonstration purposes only. ©2025 Regent Homes LLC.

All homes built by Regent Homes are built in planned communities that contain deed restrictions, use restrictions and maintenance fees. Please consult your sales representative to obtain an official copy of the deed restrictions.



Regent
HOMES

Marketed By Regent Realty
RegentHomesTN.com

