

The Waterford Traditional




Driveway & Landscaping not included.
Not actual home, but similar plan.


\$719,900*

October Occupancy

Settlement at Hoods Creek (Lot 99)
2352 Hoods Creek Path
Mount Pleasant, WI 53406

 3 Bedrooms

 2 Bathrooms

 2,320 SF

 3 Car Garage

Directions:

I-94 exit Hwy C/Spring Street. East on Hwy C/
Spring Street. Left on Airline Road. Left on
Gittings Road. Right on Settlement Trail into
neighborhood. Left on Creek View Ln. Left on
Hoods Creek Path to home on your right.

*Price subject to change without notice.



KITCHEN FEATURES

Designer kitchen with staggered painted maple cabinets with crown molding, soft close doors/drawers, roll trays & built-in look refrigerator panel

Quartz countertops, tile backsplash, & island w/ snack bar

Large corner pantry with melamine shelving & frosted glass door

GE® kitchen appliance package w/ microwave, dishwasher, slide-in gas range & built-in look French door refrigerator in slate finish

MAIN LEVEL FEATURES

Luxury vinyl plank flooring in kitchen, nook, great room, foyer, office, mudroom, laundry room, bath 2 & hallways

11' ceiling height in great room

Gas fireplace w/ stacked stone & boxed mantel w/ returns

Office w/ glass double doors

Separate laundry & mudroom

Built-in boot bench in mudroom

Cabinet, countertop/folding table, drop in utility sink & pocket door in laundry room

Additional linen closet

Window above wall tiled shower to ceiling in bath 2 & corner shelf

4 1/4" base & 3 1/2" casing & solid core swing doors

Orange peel drywall finish

MASTER SUITE FEATURES

His & hers vanities w/ quartz countertops & drawer in between

5'x3.5' walk-in tiled to ceiling shower w/swing glass door, & wall-to-wall tile shelf

Tile flooring

LOWER LEVEL FEATURES

Finished basement staircase

Basement bathroom plumbing rough in

Escape windows

ADDITIONAL FEATURES

3' bump to bath 2, bed 2, & bed 3

James Hardie® fibercement lap siding, shake & natural stone

Enlarged 3-car garage & single hung window

Insulated garage doors & ultra quiet garage door opener w/ camera

2x6 Construction

Pella® Windows

Moen® Faucets & Kohler® Toilets

Maxim® Light Fixtures

Builder Warranty Included

Focus on Energy Certified



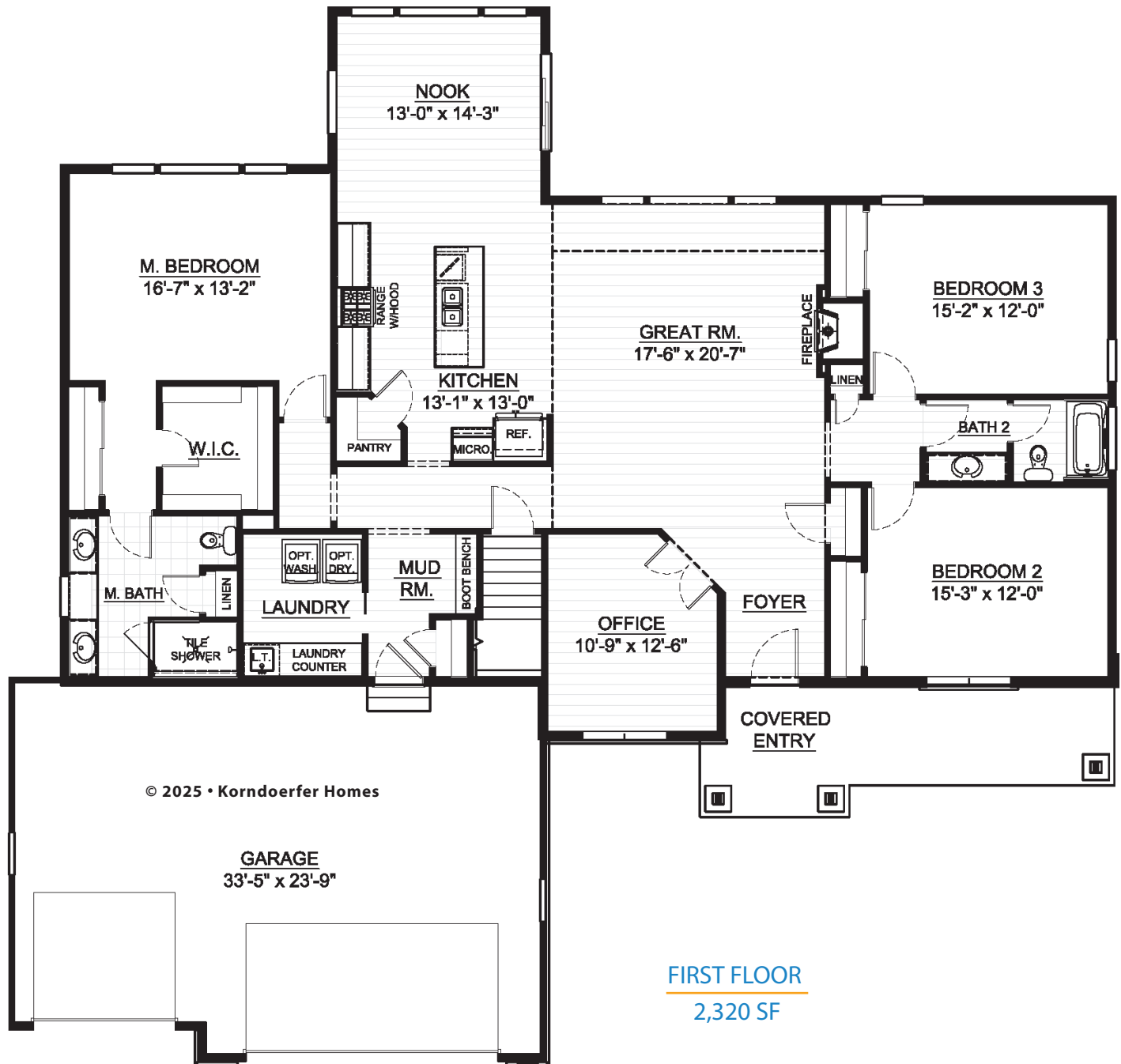
ASK RYAN!

Online Sales Consultant
262-884-9551
sales@korndoerferhomes.com

Floor Plan on Other Side →



The Waterford Traditional Floor Plan



ASK RYAN!

Online Sales Consultant
262-884-9551
sales@korndorferhomes.com

