

DESIGN

ASHLAND - 6423



A



B



C



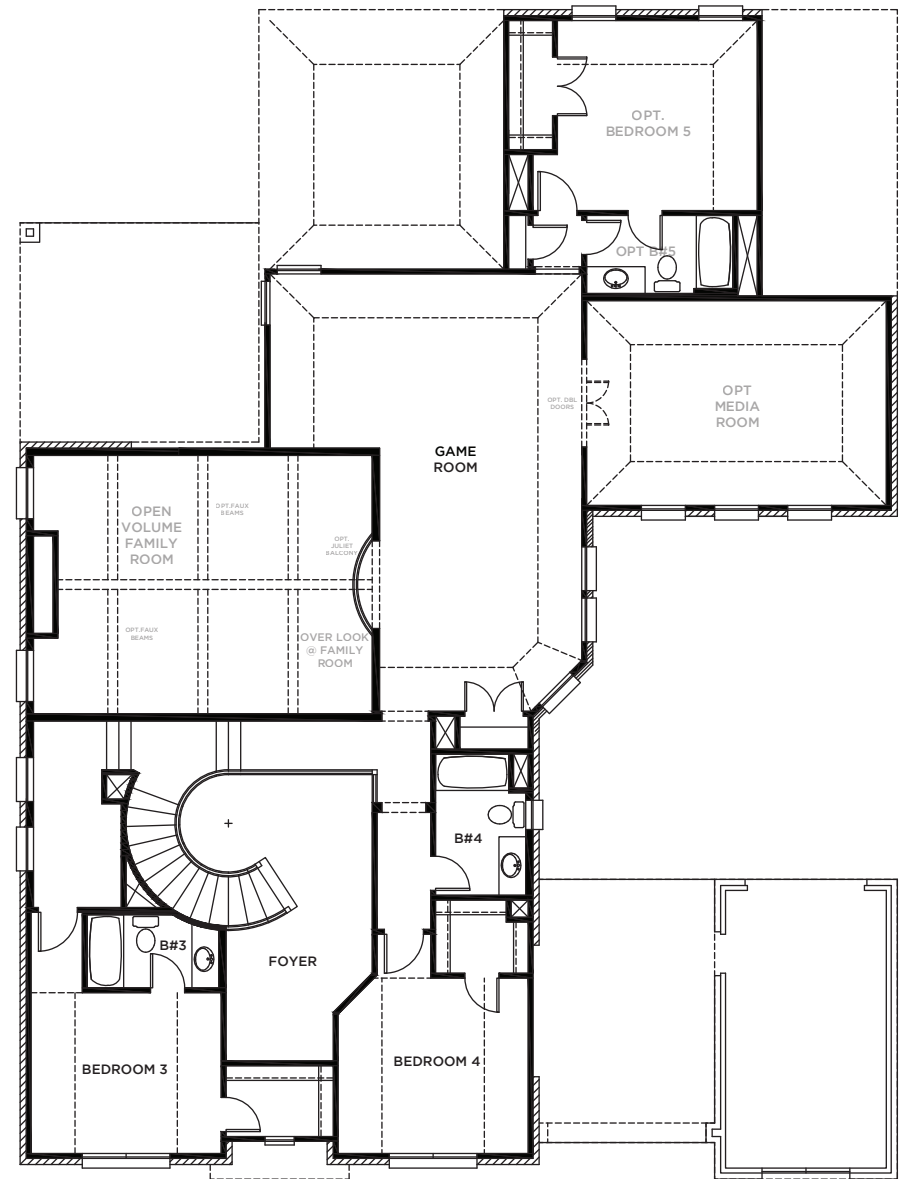
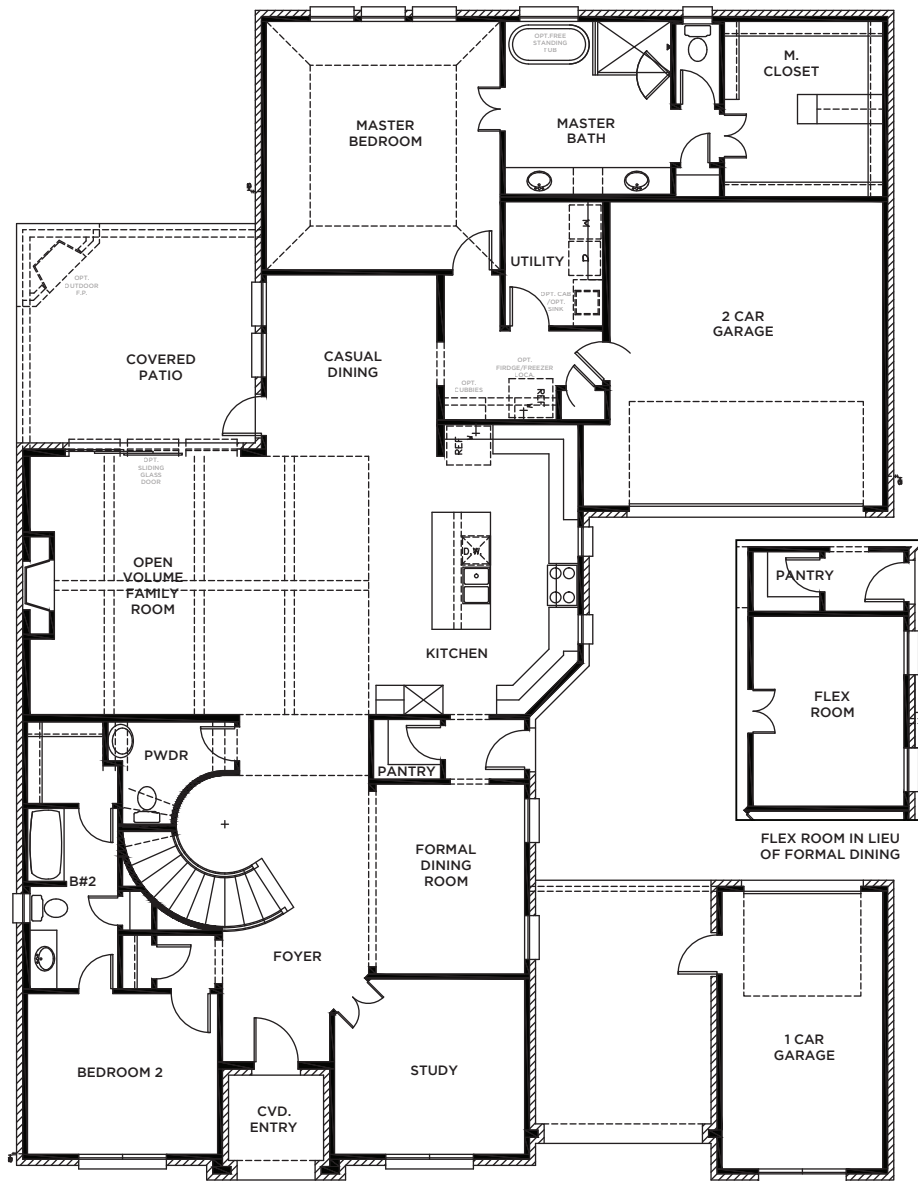
D



E



All Product including Architectural Designs, ©2000-2025, Shaddock Homes, LTD., All rights reserved. There may be existing or future design changes made in the floorplans, building products, methods, square footage, or designs used in our homes that are not reflected in our information, sales center or in our models. The materials, designs, square footages, features, and amenities shown are based upon current development plans, which are subject to change without notice. No guarantee is made that the designs, square footages, materials, features, and amenities depicted by artist's renderings or otherwise described will be built, or if built, will be of the same type, size or nature as depicted or described. All stone elevations, metal roofs, cast stone door and window headers and solid sawn cedar posts are optional, but available via change order. Front doors will match the specification sheet or chosen door upgrade. Prices and terms subject to change without notice. **REVISION DATE: 8-18-25**



ASHLAND 6423 (3,7.25)

FIRST FLOOR

SECOND FLOOR

	S.FT
First Floor	2743
Second Floor	1340
Total Living Area	4083
2 Car Garage	431
1 Car Garage	256
Covered Entry	50
Covered Patio	245
Porte Cochre	216
Total Area	5281
SHADDOCK HOMES	