



Lot#: TR-76 **MLS:** 763129 **Floor Plan:** Gossamer **Bedrooms:** 3 **Baths:** 2.5 **Total Sqft.:** 2,144

Exterior:

- Two-Car Garage
- Stone Facade
- Craftsman Elevation
- Pressure-Treated Deck

Gourmet Kitchen:

- Quartz Countertops
- Tile Backsplash
- Kitchen Island with Level Overhang
- Stainless Steel Appliances
- Painted Cabinets / Crown Molding
- Breakfast Nook

Interior Features:

- Laminate Plank Flooring throughout most of 1st Floor
- Open Foyer & Adjoining Dining Room
- Two-Story Great Room
- Additional Recessed Lights
- Private Flex Space / Office on 1st Floor
- Laundry Room on 1st Floor
- Prewires for Ceiling Fans in Flex Space & All Bedrooms
- Open Loft Overlooking Great Room
- Full Basement

Luxurious Owner's Suite:

- Private Location on 2nd Floor
- 2 Large Walk-In Closets
- Spa-Styled Bath with Double Quartz Vanities, Glass-Enclosed Tiled Shower & Soaking Tub



Schedule Your Appointment Today!

Sandy Sekerak, Sales Manager | 610-928-0555 | SandyS@KayBuilders.com

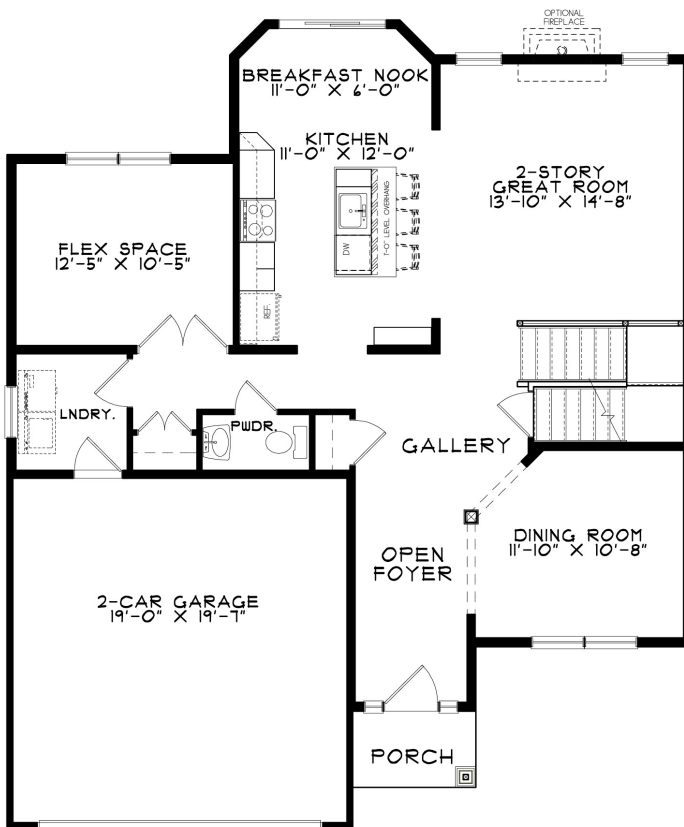
THE FIELDS AT TWIN RUN

Community Features:

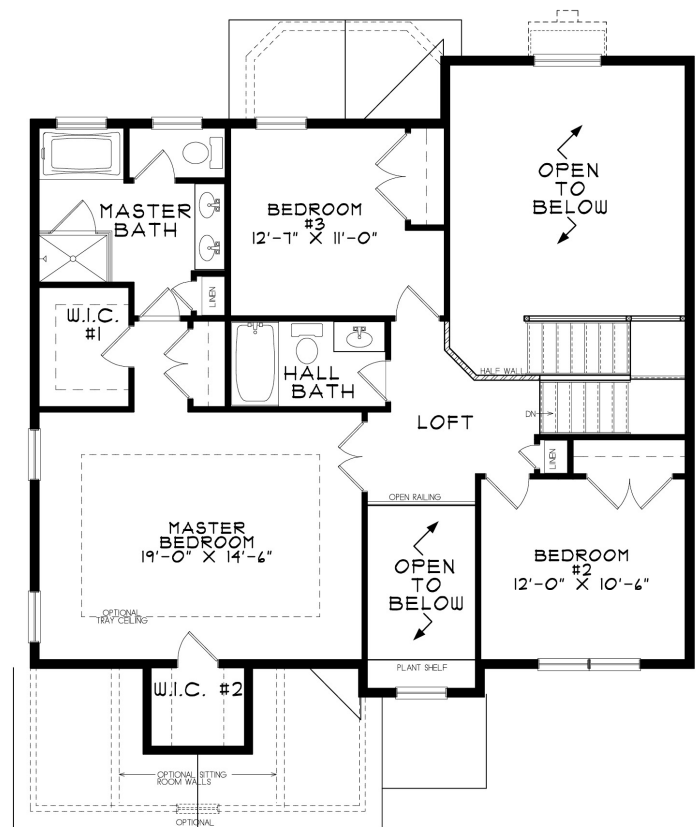
- Located in Highly-Rated East Penn School District
- Walking Path and Community Open Space
- Superior Curb Appeal & Unique Home Pairings
- Convenient location close to Healthcare, Shops, Dining, Downtown Emmaus, Recreation Areas, & Much More!

3721 Samantha Lane | Macungie, PA 18062

Floor Plan: Gossamer



FIRST FLOOR



SECOND FLOOR

Schedule Your Appointment Today!

Sandy Sekerak, Sales Manager | 610-928-0555 | SandyS@KayBuilders.com



KAY BUILDERS
DECADES OF EXCELLENCE
EST. 1961

www.KayBuilders.com

Home Pricing Subject to Change Without Notice. Subject to Errors and Omissions.
Home May Not Be Exactly As Shown in Pictures. See Sales Manager for Details.

09.24.25

