

# The Geneva Estate

## Ready Home for Sale







Driveway & Landscaping not included.  
Not actual home, but similar plan.

**\$784,900\***

**October Occupancy**

Cedar Ridge (Lot 3)  
4857 113th Street  
Pleasant Prairie, WI 53158

-  3 Bedrooms
-  2 Bathrooms
-  1,981 SF
-  3 Car Garage

### Directions:

I-94 to 104th Street/Hwy 165. East on 104th Street/  
Hwy 165. At the Roundabout, take the 1st exit onto  
Springbrook Rd. Turn left onto 47th Ave. Right onto  
113th Street into the neighborhood.

\*Price subject to change without notice.



### KITCHEN FEATURES

- Designer Kitchen with 42" stained cabinets with crown molding, roll trays, & soft close doors/drawers
- Quartz countertops, tile backsplash, island w/ snack bar & Kohler® Neoroc sink
- Walk-in pantry w/ melamine shelving
- GE® designer kitchen appliance package w/built-in microwave, dishwasher, slide-in gas range, chimney hood, & built-in look French door refrigerator in slate finish

### MAIN LEVEL FEATURES

- 11' ceiling in great room, foyer & office
- Transom windows in great room
- Luxury vinyl plank flooring in kitchen, nook, great room, foyer, laundry room, mudroom, bath 2 & hallways
- Gas fireplace w/ stone surround & boxed mantel w/ returns
- Built-in stained lockers in mudroom
- Hallway linen closet
- Laundry room w/ utility sink
- Bath 2 w/ tiled tub surround & corner shower shelf
- Additional windows & select jamb & cased windows
- 4 ¼" base & 3 ½" casing
- Office w/ glass double swing doors

### PRIMARY SUITE FEATURES

- Large walk-in closet
- Double bowl vanity
- Separate commode room
- Large corner walk-in tiled shower to ceiling w/ glass swing door & tiled bench
- Tile flooring

### ADDITIONAL FEATURES

- Fibercement siding, trim, & corner boards
- Extended 3 car garage w/ ultra quiet garage door opener
- 4' bump to nook
- Half wall at basement staircase
- Basement bathroom plumbing rough in
- Solid core doors
- 2x6 Construction
- Smooth drywall finish
- Focus on Energy Certified
- Pella® Windows
- Dura Supreme® Cabinets
- Moen® Faucets & Kohler® Toilets
- Maxim® Light Fixtures
- Builder Warranty Included

Floor Plan on Other Side →

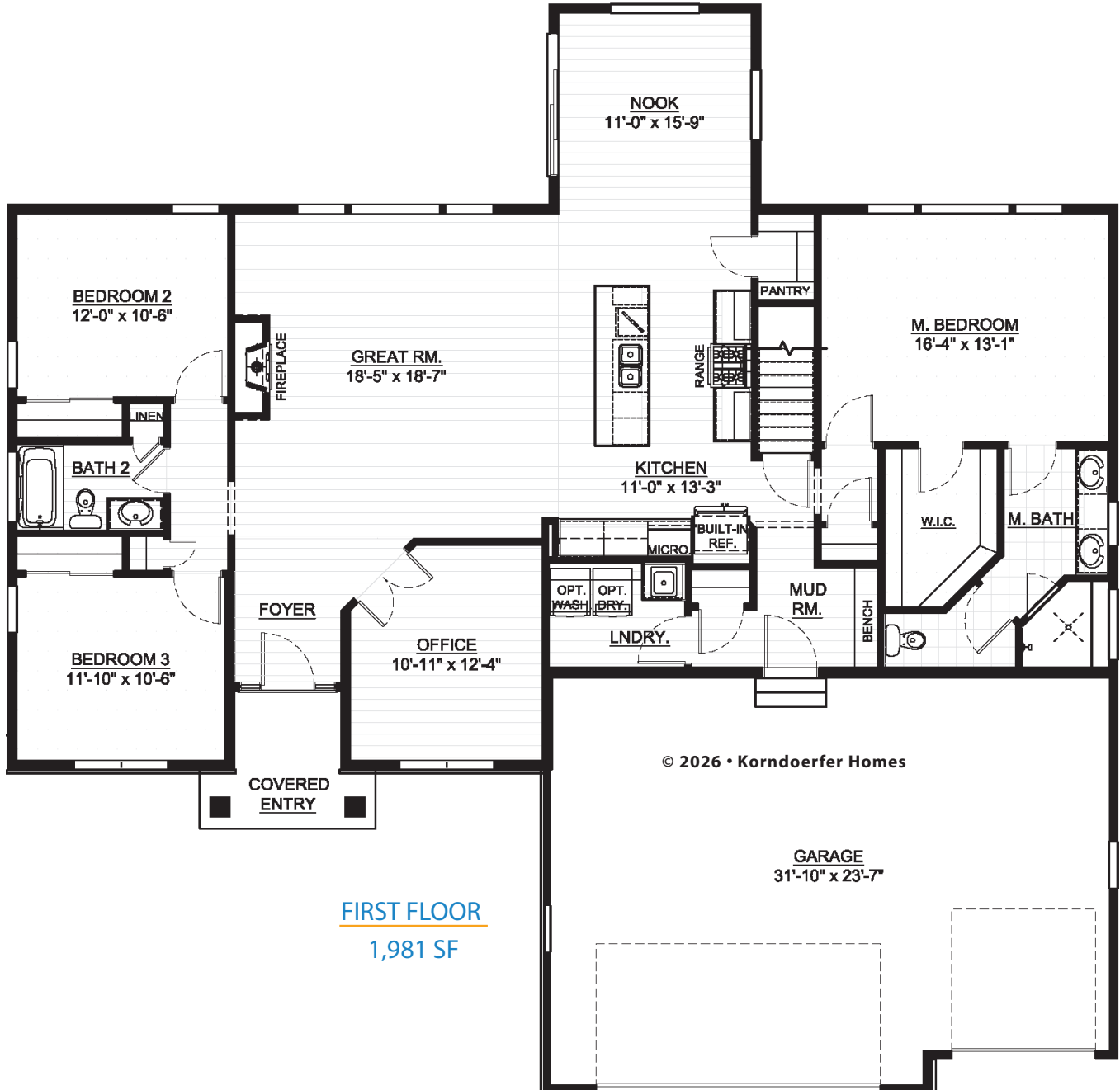


### ASK RYAN!

Online Sales Consultant  
262-884-9551  
sales@korndoerferhomes.com



# The Geneva Estate Floor Plan



**FIRST FLOOR**  
1,981 SF



## ASK RYAN!

Online Sales Consultant  
262-884-9551  
sales@korndoerferhomes.com

