

The Springfield

BY TODD HOMES LLC

TODD
Homes
llc.com
Affordable Luxury



THE SPRINGFIELD FEATURES:


- A 2133-2273 SF, 4 Bedroom, 2.5 Bath Open Concept Design
- Elevation "A" - 6ft Covered Entry
- Elevation "B" - 10ft Covered Porch
- Elevation "C" - Full Covered Porch
- ENORMOUS Primary Suite with Adjoining Lux Bath
- Great Room Flows into Open Dining & Kitchen for Everyday Gathering & Entertaining
- Add the Optional Sunroom for an Additional 140 SF
- The Stunning Kitchen Offers Granite Countertops, Island, Soft Close Shaker Cabinetry & Stainless Steel Appliances
- The 1st Floor Office/Bonus Room
- Primary Suite with Walk-In Closet & Adjoining Lux Bath Featuring Quartz Topped Double Vanity, Moen Fixtures, Soft Close Shaker Cabinetry, Walk-In Shower & More
- Lower Level with Full Bath Rough-In & Optional Egress



 4
Bedrooms

 2.5
Bathrooms

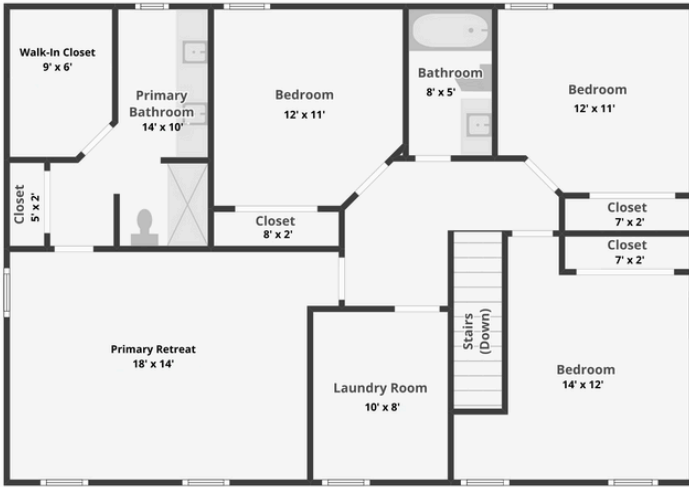
 2
Garage

 2133-2273
Square Feet

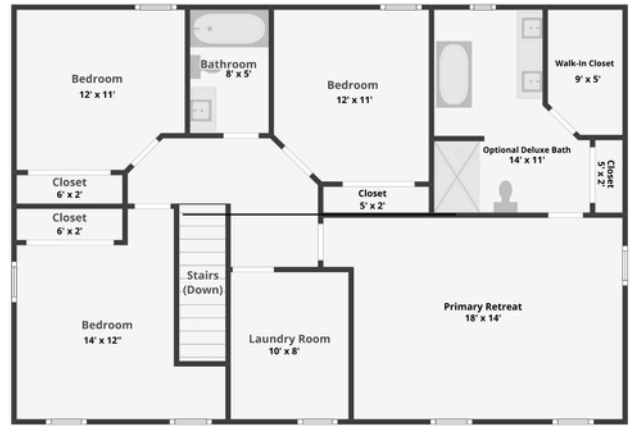
The Springfield

BY TODD HOMES LLC

TODD
Homes
llc.com
Affordable Luxury

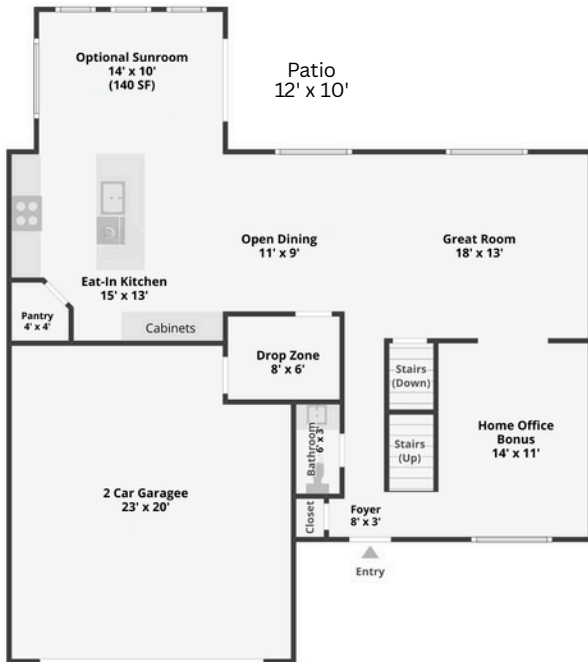


Second Floor - 1218 SF

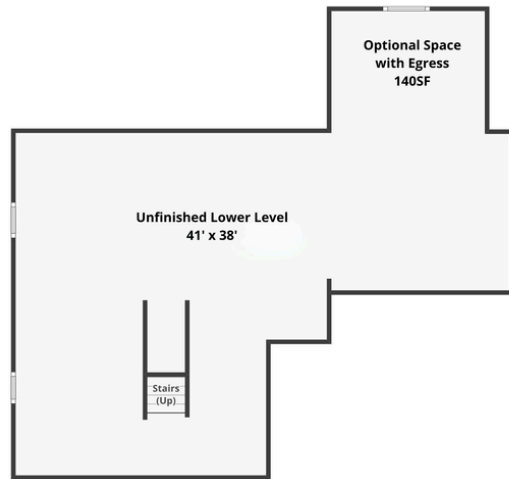


The Springfield - Second Floor with Optional Deluxe Bath - 1218SF

Second Floor - Optional Deluxe Bath



First Floor - 1055 SF with Optional Sunroom



The Springfield Lower Level

Lower Level



Explore The Springfield

CONTACT US



513.823.3774



VISIT US: www.toddhomesllc.com