

The Creekside

TODD
Homes
llc.com
Affordable Luxury

LUXURY PAIRED VILLAS BY TODD HOMES LLC IN
WATERFORD PLACE, A PREMIER LIFESTYLE COMMUNITY



- Private, Tree-Lined Cul-De-Sac Homesites Available NOW in a Desirable, Established Area of Middletown Close to the Butler-Warren Border, I-75, Atrium Medical Center, Miami University, Armbruster Nature Preserve, Shopping, Dining & Entertainment
- These Villas are Designed for Easy, Low Maintenance Living in a Private Setting
- Open Concept Design with Soaring Ceilings Minimizes Barriers & Walls Creating Interconnected Living Spaces
- High-End Kitchen with 6ft Food Prep/Serving/Dining Island, Granite Countertops, Soft Close Shaker Cabinetry, Moen Fixtures, 6ft x 9ft Walk-In Pantry & Adjoining Dining/Sunroom that Walks Out to a 9ft x 6ft Covered Porch for Your Outdoor Enjoyment
- Beautiful & Durable LVT Flooring in All Shared Living Spaces Allow for the Villas to be Both Easy to Maintain & Elegant
- Expansive Great Room Flows into the Kitchen & Dining Room - Ideal Design for Socializing, Entertaining & Relaxing
- Massive Primary Suite with Cathedral Ceiling, 10ft x 8ft Walk-In Closet & Adjoining Spa-Like Bath
- Our Upgraded Primary Bath Offers a 7ft x 4ft, Zero Entry, Walk-In Shower with Floor to Ceiling Tile, a Bathing Bench, 2 Quartz Topped Vanities, Moen Fixtures & Soft Close Shaker Cabinetry
- 2nd Bedroom/Office/Guest Room with French Doors Leading to a 13ft x 7ft Covered Porch - Enjoy the Sunsets at Waterford Place
- Ease of Living in this Lifestyle Community- No More Cutting the Grass or Shoveling Snow & Fences are Allowed!
- Enjoy Leisurely Walks in this Quaint, Sidewalk Community Surrounded by Trees & the Sounds of Nature
- 2 Car Garage with Storage

 **2 or 3**
Bedrooms

 **2 or 3**
Bathrooms

 **2**
Garage

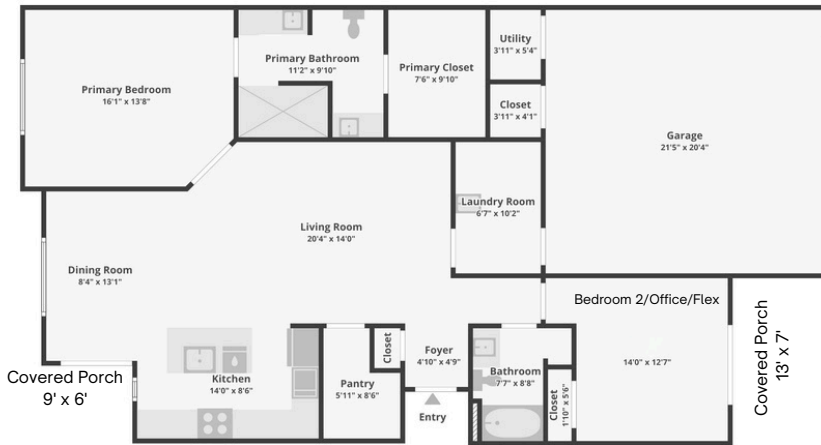
 **1507+**
Square Feet

The Creekside

LUXURY PAIRED VILLAS BY TODD HOMES LLC IN WATERFORD PLACE, A PREMIER LIFESTYLE COMMUNITY



Explore The
Luxury Creekside
Paired Villa



*3rd Bedroom Option Available with the Addition of the Optional Lower Level

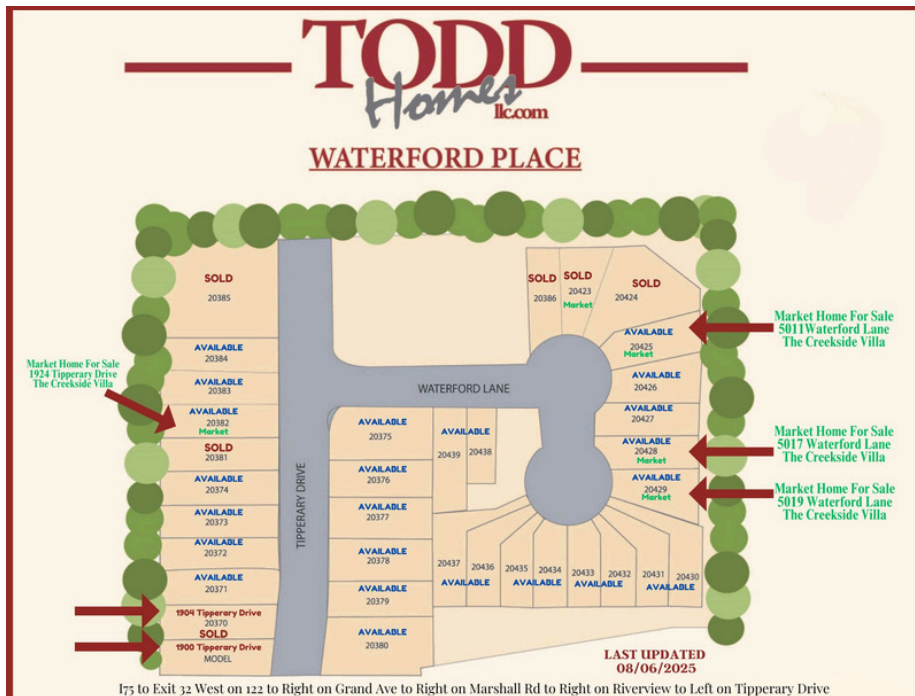
Move-In Ready



5017 Waterford Lane



5019 Waterford Lane



Copyright 2025 Todd Homes LLC. All rights reserved. Please be aware that, in line with our dedication to ongoing product enhancement, we reserve the right to alter our homes pricing, availability, features, choice of product brands, dimensions, architectural details, and design specifications. This brochure serves solely for illustrative purposes and does not form any part of a legally binding contract. Room sizes approximate.