



HALEN
HOMES

414-219-0740 | HalenHomes.com

THE EASTWICK

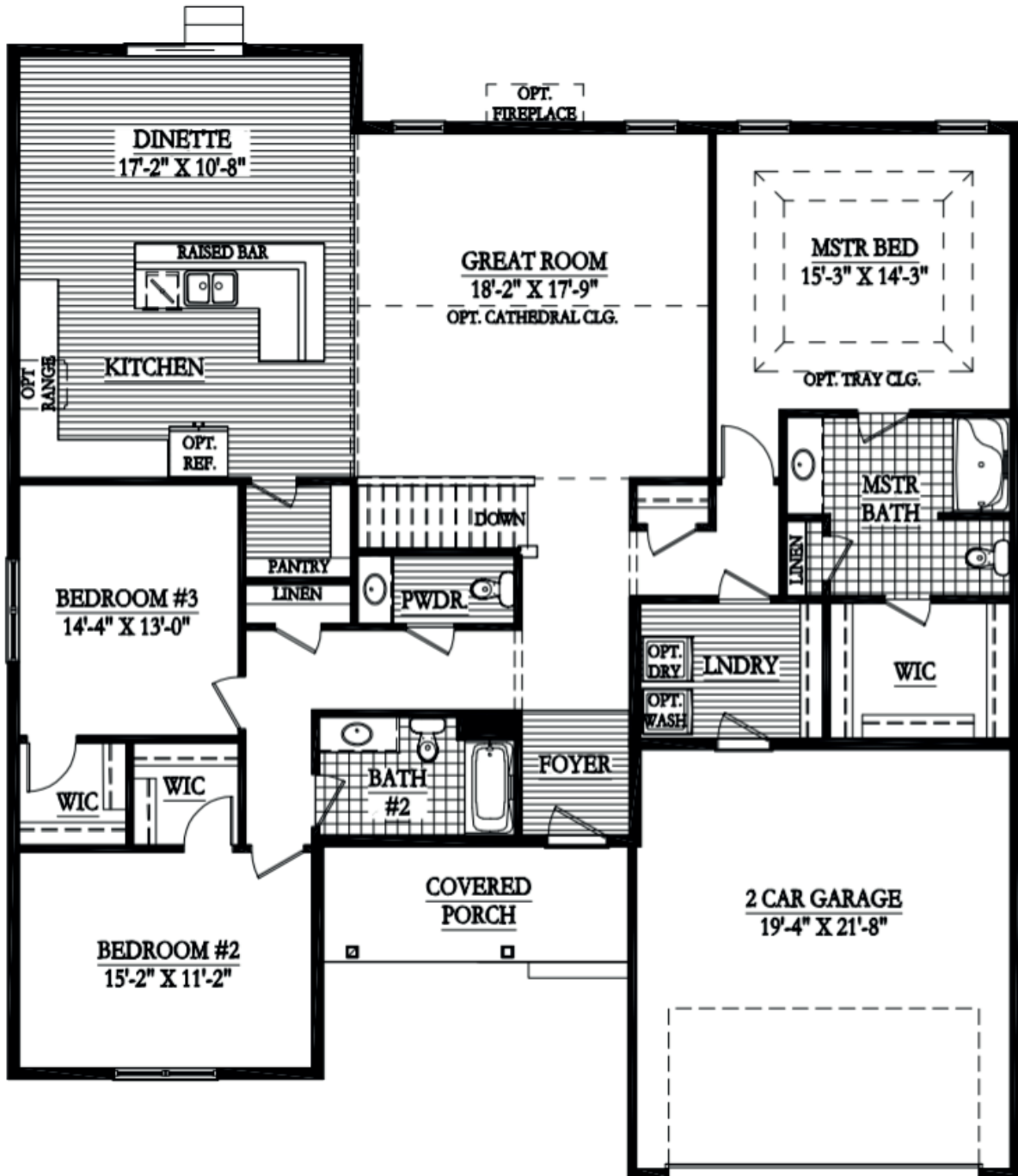


2,099 SF | Style: Ranch | 3 Bedrooms | 2.5 Bathrooms

The Eastwick is a charming three bedroom floor plan. The covered porch welcomes guests as they enter the foyer which leads to the spacious great room and kitchen that features a center island with seating, and the bright and airy dinette. The large pantry offers plenty of kitchen storage. The master suite has a full bath and walk-in closet and is opposite the laundry room for added convenience. Two additional bedrooms with walk-in closets, a full bath and a powder room round out this well-appointed home. Additional options to customize this floor plan include a fireplace in the great room, cathedral ceiling in the great room, tray ceiling in the master bedroom, and a bay window in the dinette.



Renderings and floor plans are the artist's conception. Details and dimensions may vary from actual plans. Halen Homes reserves the right to modify or change plans without notice.



HALEN
 HOMES