

The Portland



SCAN THE QR CODE
TO LEARN MORE!

6703 Blue Iris Lane | Lot 58



2 Beds



2.5 Baths



2-Car Garage



2,343 sq ft



\$534,954

Features | Under Construction

- Interior-Unit Townhome
- First-Floor Primary Suite
- Quartz Countertops
- GE Appliances
- Sunroom

Horizontal Siding
Board & Batten
Garage Door

Sierra

Roof

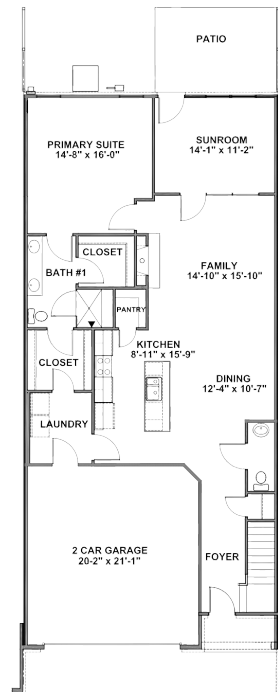
Weathered Wood

Brick

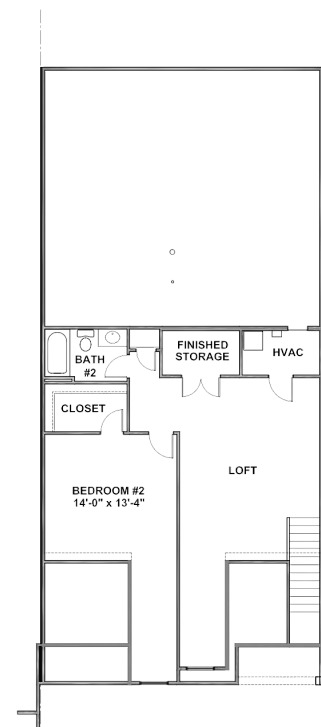
Pine Hall Brick
"Blackmoor O/S
w/ Straw Mortar

Front Door

Rosemary



First Floor Second Floor



Boone Homes

CONTACT:

Dexter Radcliffe & Kayla Keihn
(804) 481-9386



Selections

*All Selections Are Subject to Change

Boone Homes

Kitchen



KITCHEN FAUCET:
Kohler Simplice Pull-Down
Vibrant Stainless



PENDANTS (X2)

CABINETS

Benton Birch
White



**CABINET
HARDWARE**



COUNTERTOPS
Pental Quartz
Color: Unique Calacatta

GE Appliances

Dishwasher, Microwave,
Gas Convection Range



Flooring



REVWOOD SELECT

Foyer, Dining Room,
Kitchen/Pantry, Family Room,
First Floor Halls, Powder Bath,
Owner's Suite/Closet, Loft/2nd
Floor Hallways, Sunroom,
Finished Storage
Color: Fawn Chestnt



CARPET (8LB PAD)

Bedroom #2/Closet, Stairs
Color: Natural Linen

Lighting

FOYER



DINING



Bathroom #2



LIGHTING



PLUMBING

Kohler Simplice Series
Vibrant Brushed Nickel



CABINETS

Benton Burlap
Standard,
White on White Cultured Marble Top,
Large Oval Bowls



FLOOR TILE
ES01 12x24 Dabney
Road/Solida Wonder by Ethan
Stone

Primary Bath

LIGHTING (X2)



PLUMBING

Kohler Simplice
Vibrant Brushed Nickel



Kohler Awaken
Vibrant Brushed Nickel

WALL TILE

ML70 Bianca Carrara
10x14 Mirasol by
American Olean

SHOWER FLOOR

WI03 2x2 Mos. English
Grey Windmere by
American Olean

FLOOR TILE

WI03 12x24 Floor
PEnglish Grey Windmere
by American Olean

COUNTERTOPS

Luce Oro Quartz Remnant



CABINETS

Elkins White
Raised Height
Standard Construction



**CABINET
HARDWARE**

