

DESIGN

COMANCHE - 9204



SHADDOCK
—HOMES—



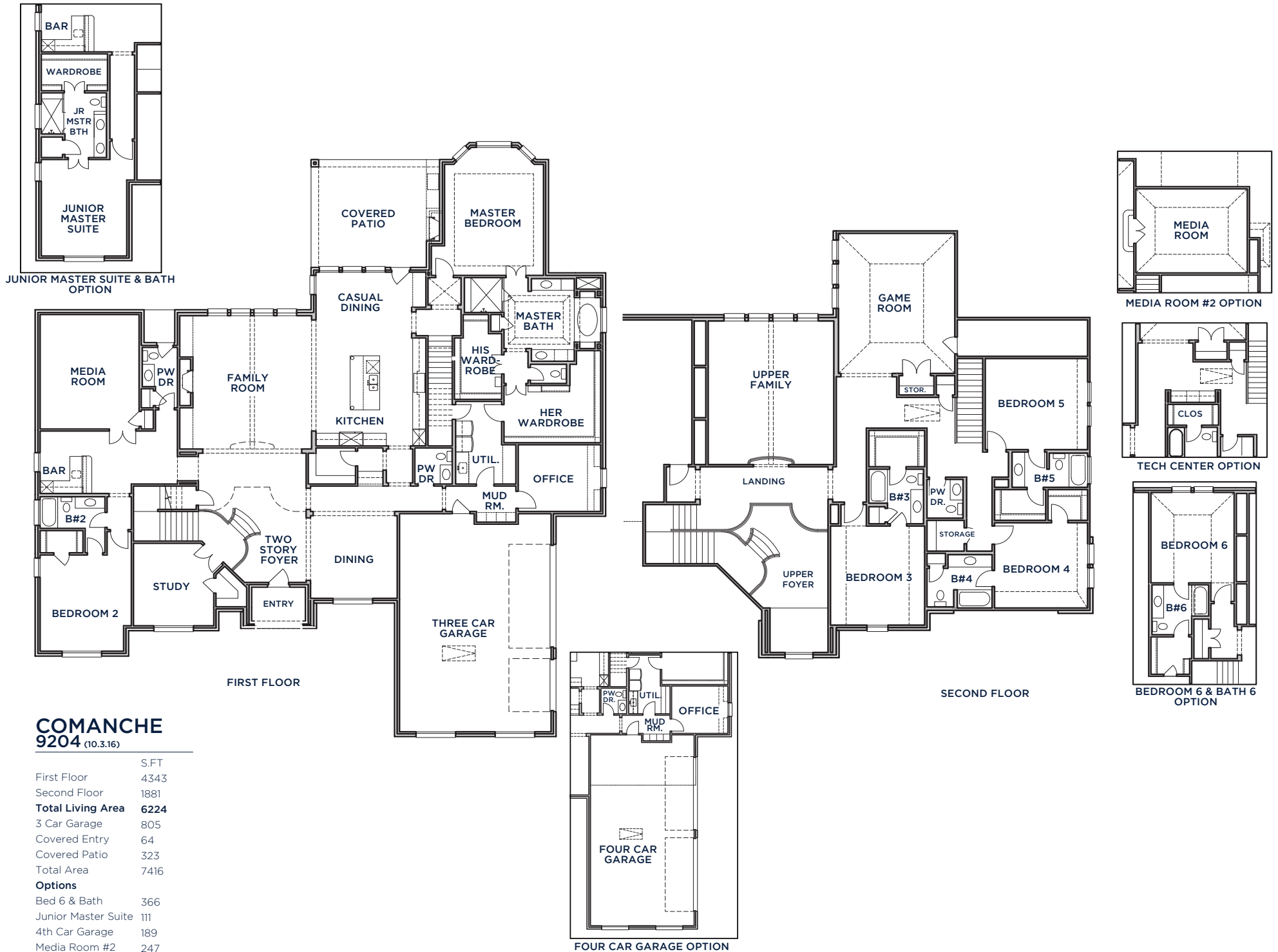
A



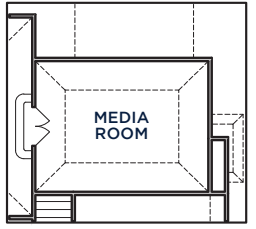
B



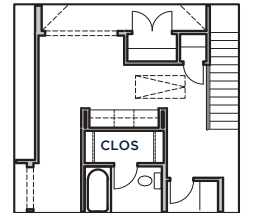
All Product including Architectural Designs, ©2000-2023, Shaddock Homes, LTD., All rights reserved. There may be existing or future design changes made in the floorplans, building products, methods, square footage, or designs used in our homes that are not reflected in our information, sales center or in our models. The materials, designs, square footages, features, and amenities shown are based upon current development plans, which are subject to change without notice. No guarantee is made that the designs, square footages, materials, features, and amenities depicted by artist's renderings or otherwise described will be built, or if built, will be of the same type, size or nature as depicted or described. All stone elevations, metal roofs, cast stone door and window headers and solid sawn cedar posts are optional, but available via change order. Front doors will match the specification sheet or chosen door upgrade. Prices and terms subject to change without notice. **REVISION DATE: 10.3.16**



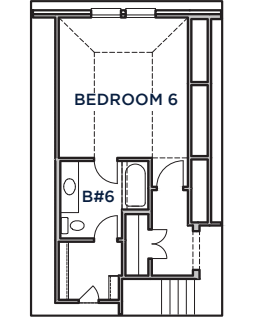
JUNIOR MASTER SUITE & BATH OPTION



MEDIA ROOM #2 OPTION



TECH CENTER OPTION



BEDROOM 6 & BATH 6 OPTION

COMANCHE
9204 (10.3.16)

	S.FT
First Floor	4343
Second Floor	1881
Total Living Area	6224
3 Car Garage	805
Covered Entry	64
Covered Patio	323
Total Area	7416

Options

Bed 6 & Bath	366
Junior Master Suite	111
4th Car Garage	189
Media Room #2	247

SHADDOCK HOMES