



EUROPEAN

THE JUNIPER

Our functional Juniper plan was designed with family living in mind. Featuring 3 bedrooms, 2.5 baths, a spacious living area and 2-car garage. This home offers an open concept main level which leads to the covered patio - perfect for entertaining family and friends. The second level has a laundry room, two neighboring bedrooms, a full bathroom and an owners suite with walk-in closet and dual vanities.

FARMHOUSE



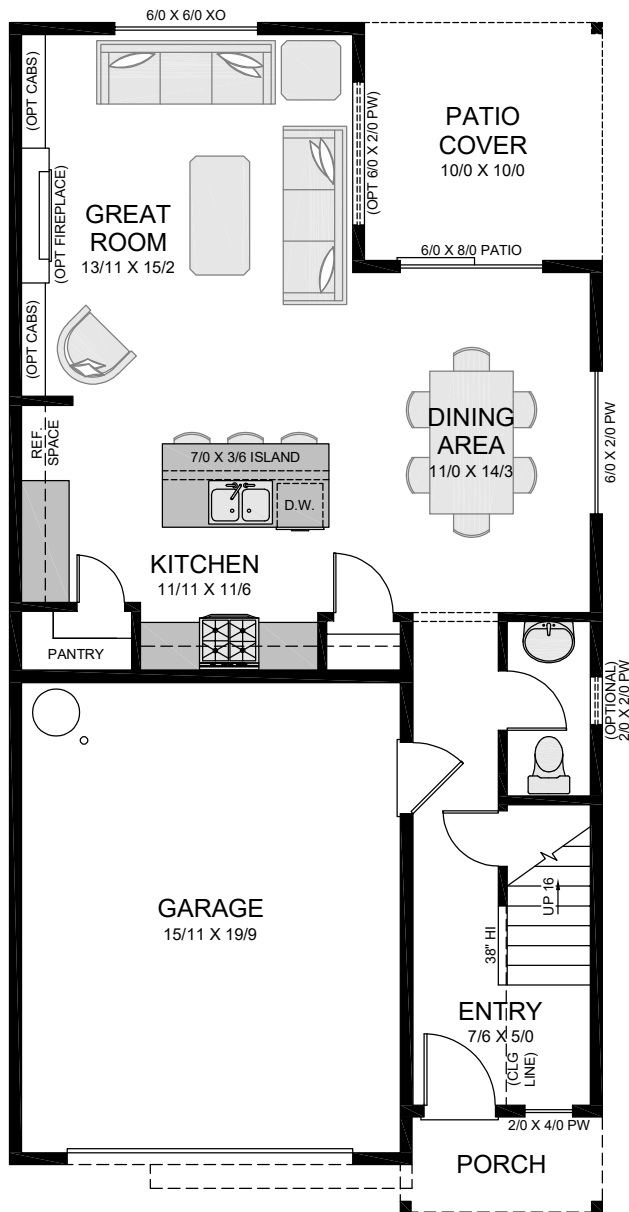
NORTHWEST B



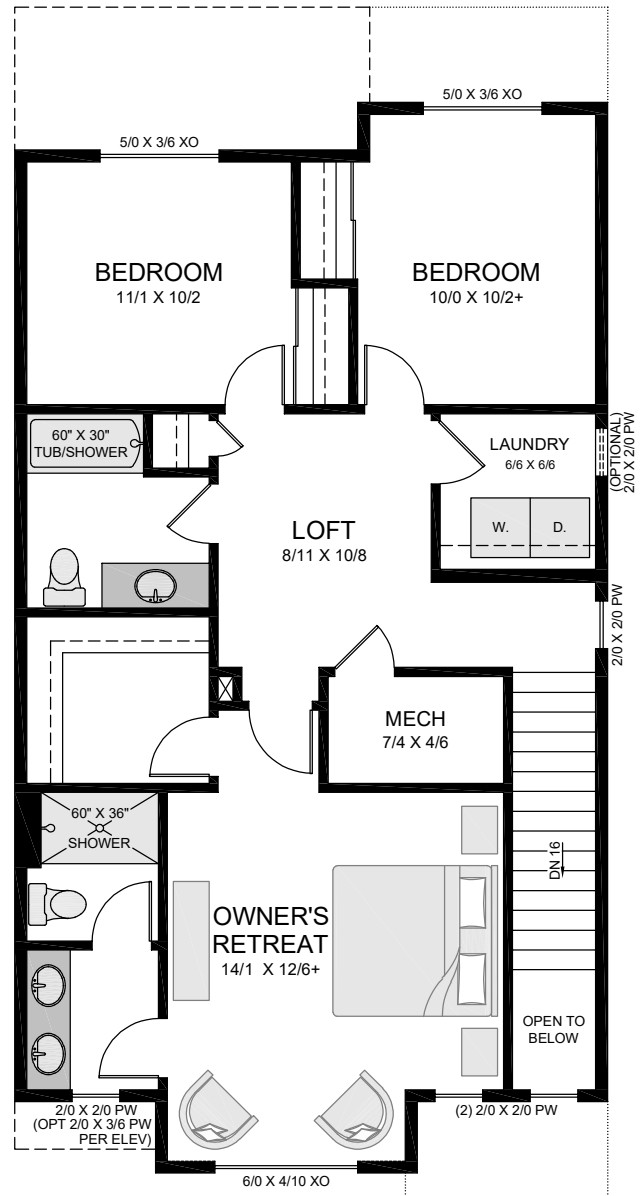
NORTHWEST



THE JUNIPER - 1,734 SQ FT



Main Floor



Upper Floor



Elevation renderings are artists' interpretations and may not reflect actual amenities, paint, driveways, landscaping, fencing, etc. Square footage approximate, may change based upon elevation. Prices, promotions, specifications and availability subject to change or prior sale without notice or obligation. Included plan options vary by community and collection. Due to manufacturer and supply constraints, actual building products and materials may vary from photo renderings.



DID YOU KNOW?

All New Tradition Homes are 100% ENERGY STAR® third-party certified for higher energy savings, healthier indoor air and a better built, more comfortable home. Our homes are certified to be up to **15% more energy efficient than a new home** built to meet the Washington State Energy Code.