

DESIGN

MERIDIAN - 4439



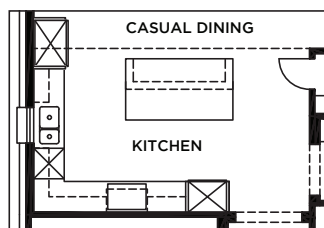
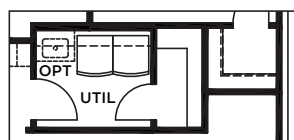
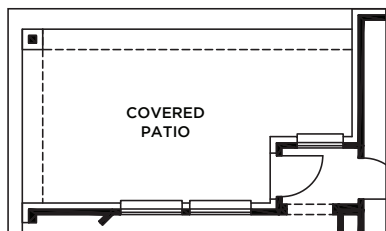
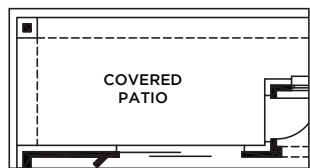
A



C



All Product including Architectural Designs, ©2000-2023, Shaddock Homes, LTD., All rights reserved. There may be existing or future design changes made in the floorplans, building products, methods, square footage, or designs used in our homes that are not reflected in our information, sales center or in our models. The materials, designs, square footages, features, and amenities shown are based upon current development plans, which are subject to change without notice. No guarantee is made that the designs, square footages, materials, features, and amenities depicted by artist's renderings or otherwise described will be built, or if built, will be of the same type, size or nature as depicted or described. All stone elevations, metal roofs, cast stone door and window headers and solid sawn cedar posts are optional, but available via change order. Front doors will match the specification sheet or chosen door upgrade. Prices and terms subject to change without notice. **REVISION DATE: 12.7.2018**



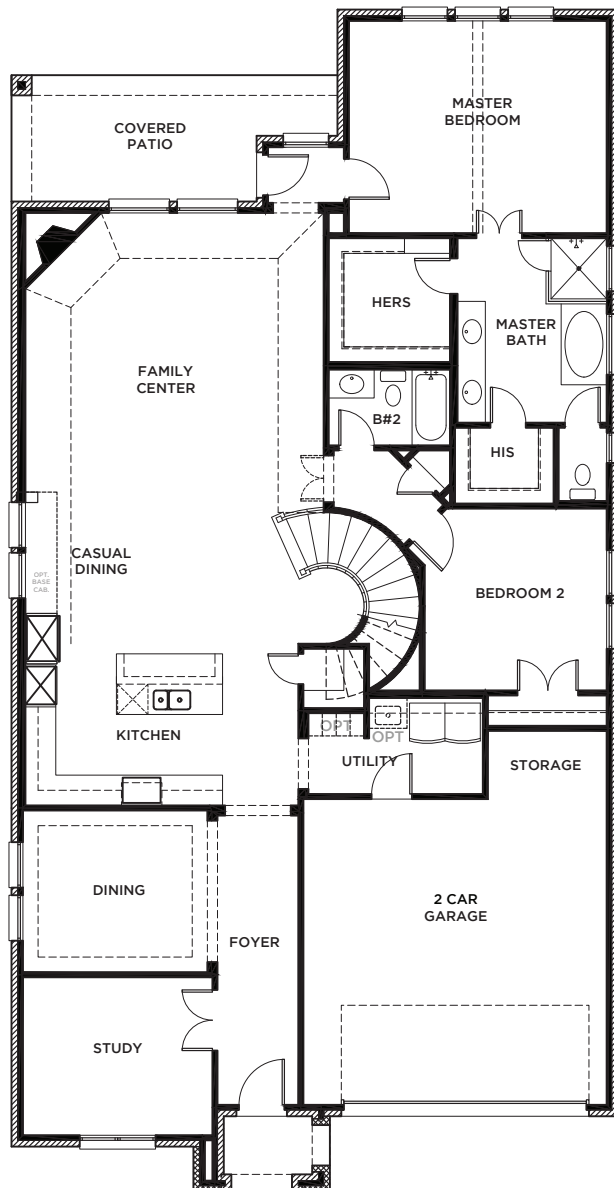
MERIDIAN 4439 (12.7.18)

	S.F.T
First Floor	2226
Second Floor	879
Total Living Area	3105
2 Car Garage	473
Covered Porch	41
Covered Patio	156
Total Area	3775

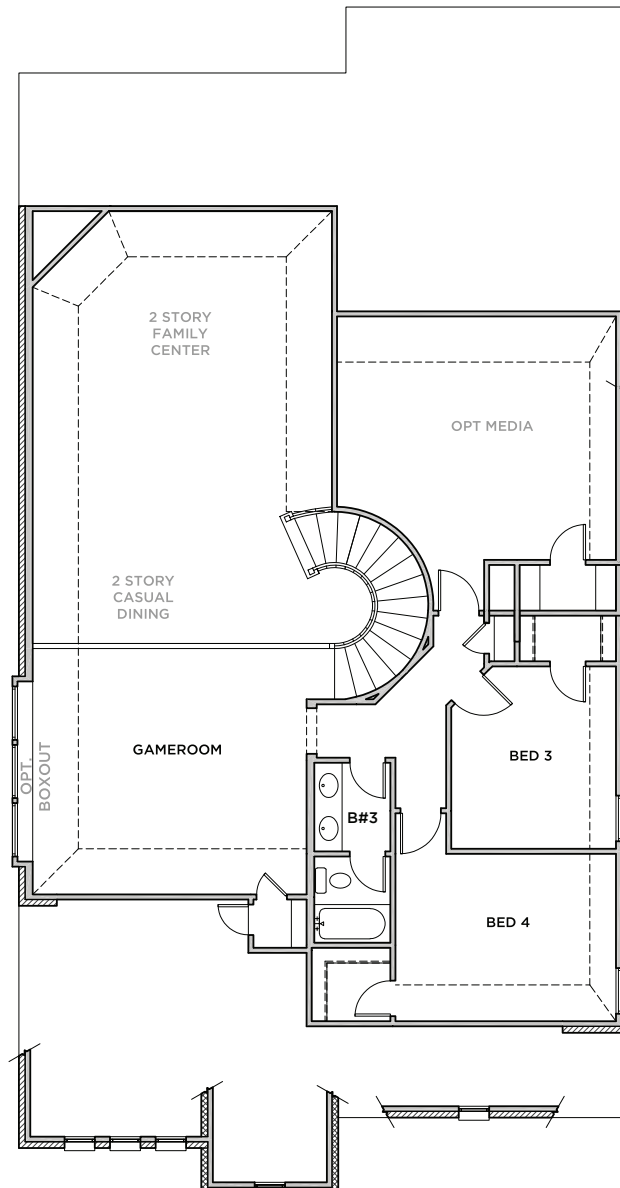
Options

Media Room	349
5th Bed & 4th Bath	271
Extended Patio	65
Utility/Storage	26

SHADDOCK HOMES



FIRST FLOOR



SECOND FLOOR

